



Addendum #3

Issue Date: May 3rd, 2024
Bids Due: May 10th, 2024
Time: 1:30 PM
Location: Civic Center
325 E. Aspen Ave.
Fruita, CO 81521

The items contained in this Addendum are hereby issued to answer questions asked prior to the release of this addendum, to add new bid items, and to issue a new bid schedule.

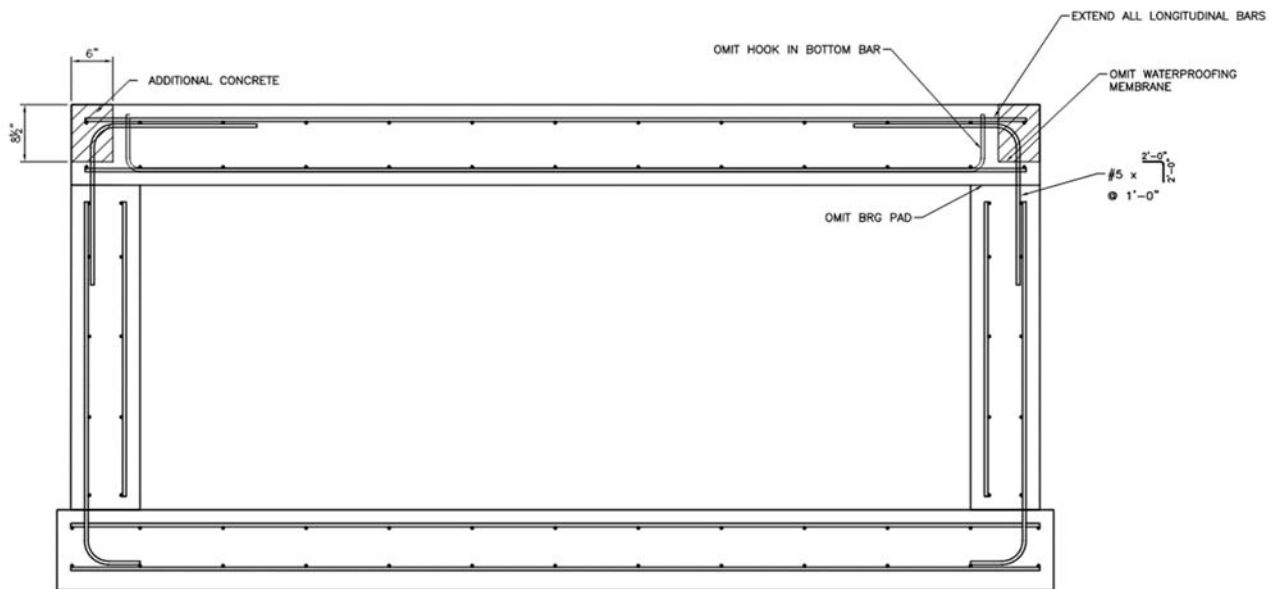
This Addendum shall include the following enclosed items:

- A. Addendum 3 Bid Schedule
- B. Bid Item: 36" Culvert in ditch along HWY 6&50

Question/Answer Section

Q1:-I noticed question 12 in addendum #2 asked about pre-stressed which is not the same as pre-cast. The SGM drawings show a series of precast lids for the concrete box culvert. My question is it an acceptable option to pour the entire concrete box culvert as cast-in-place and eliminate the precast lid sections in doing so?

A: A cast in place top slab may be used in place of the precast slabs shown in the plans. If this option is selected by the contractor there will be additional concrete and reinforcing steel that will not be measured and paid for. The detail below shows the additional corner bars, and changes to the top and bottom bars as well as the location of additional concrete. The bearing pad and waterproofing membrane and hooks on the #6 bar may be omitted. The deck joint detail on sheet S6 is no longer necessary if this option is selected. The top of the wingwalls and headwalls must be placed at the same time as the top slab. The deck must be placed in more than one pour to minimize shrinkage. If this is selected SGM will work with the contractor to determine the locations of the construction joints. SEE BELOW DIAGRAM:



Q2: The new item 78 for the Highway Intersection Improvements says that it covers the raised island. Is there a detail of this that I am not seeing? It looks like it is just a concrete covered island, but I wasn't sure if it was patterned/colored. Also, sheet 021 shows a 36" Culvert to the northeast of this new island. Is this also to be included in item 78?

A: The raised island should be installed to the same pattern, color and style of the new islands installed in the CDOT right-of-way at the 20 Road intersections. It should include the same curb dimensions as well as 5' patterned, colored concrete panels. We will add a bit item for the 36" Culvert.

End of Question/Answer Section

New Bid Item Description Section

Item 80 Add New 36" CMP AT HWY 6 & 50

This pay item includes furnishing all equipment, materials, and labor necessary to provide and install 36" CMP culvert extensions on the existing culvert, including excavation, excavation bracing, excavation de-watering, bedding, pipe connections, backfill and compaction. Payment for this item will be based on unit prices quoted for the actual length of pipe installed.

End of New Bid Item Description Section

End of Addendum #3

City of Fruita
Bid Schedule
19 Road Improvement Project - Addendum 3
Project No. 130-750-77-4730

No.	Item Description	Quantity	Unit	Unit Cost	Extension
1	Mobilization	1.0	LS		
2	Clear and Grub	5.5	AC		
3	Construction Surveying	1.0	LS		
4	Material Testing	1.0	LS		
5	Stormwater Management	1.0	LS		
6	Traffic Control	1.0	LS		
7	Flashing Stop Sign	4.0	EA		
8	Variable Message Board	6.0	Days		
9	Reset mail box	17.0	EA		
10	Small Tree Removal (12-Inch Dia. and less)	1.0	LS		
11	Sign (Stop/Speed limit/Etc.)	17.0	EA		
12	Remove Fence	4,100.0	LF		
13	Concrete Curb Gutter & Sidewalk Removal	20.0	LF		
14	Concrete Ditch Removal	700.0	LF		
15	Remove/Plug existing ditch culvert	100.0	LF		
16	Remove/reset Irrigation Pump	2.0	EA		
17	Embankment/Fill	13,000.0	CY		
18	Excavation	13,000.0	CY		
19	Class 6 Aggregate Base Course	17,000.0	TON		
20	Asphalt Milling/Disposal	14,000.0	SY		
21	Hot Mix Asphalt	9,275.0	Ton		
22	Curb Ramp Type 1	3.0	EA		
23	Curb Ramp Type 2	1.0	EA		
24	Curb Ramp Type 3	2.0	EA		
25	4"-Wide Solid White Striping	15,000.0	LF		
26	4"-Wide Solid Yellow Striping	14,000.0	LF		
27	Thermoplastic Crosswalk/Stop Bar Markings	4,785.0	SF		
28	Connect to existing manhole	1.0	EA		
29	4-ft Manhole	15.0	EA		
30	12-inch SDR-35	2,769.7	LF		
31	15-inch SDR-35	1,820.7	LF		
32	4-inch Service Line	1.0	EA		
33	Storm Ceptor	2.0	EA		
34	60-inch Storm Manhole	12.0	EA		
35	72-inch Storm Manhole	5.0	EA		
36	24"x24" Catch Basin	9.0	EA		
37	12" CMP Driveway Culvert	500.0	LF		

City of Fruita
Bid Schedule
19 Road Improvement Project - Addendum 3
Project No. 130-750-77-4730

No.	Item Description	Quantity	Unit	Unit Cost	Extension
38	15-inch HDPE	544.5	LF		
39	18-inch HDPE	95.0	LF		
40	24-inch HDPE	2,663.1	LF		
41	30-inch HDPE	2,044.9	LF		
42	48-inch RCP	111.3	LF		
43	12" PVC	1,696.4	LF		
44	18" PVC	66.4	LF		
45	24" PVC	501.8	LF		
46	18" RCP	132.6	LF		
47	24" RCP	474.2	LF		
48	Irrigation Box 1A	1.0	EA		
49	Irrigation Box 2A	1.0	EA		
50	Irrigation Box 3A	1.0	EA		
51	Irrigation Tee 1B	1.0	LS		
52	Irrigation Tee 2B	1.0	LS		
53	Irrigation MH 1C	1.0	LS		
54	Irrigation MH 2C	1.0	LS		
55	12" Gate Valve	1.0	EA		
56	GVIC Removal of Structure	1.0	EA		
57	GVIC Structural Excavation	1,175.0	CY		
58	GVIC Structural Backfill (Class 1)	526.0	CY		
59	GVIC Aggregate Base Course (Class 3)	250.0	CY		
60	Concrete Class D (Bridge)	194.0	CY		
61	Structural Concrete Coating	250.0	SF		
62	Reinforcing Steel	28,300.0	LB		
63	8-inch PVC C-900	1,250.0	LF		
64	2-inch Gate Valve	1.0	EA		
65	Air Release/Air Vacuum	2.0	EA		
66	3/4-inch Service Near	3.0	EA		
67	3/4-inch Service Far	3.0	EA		
68	Fire Hydrant Assembly	1.0	EA		
69	Export Unsuitable Backfill Material	9,700.0	CY		
70	Structural Backfill Material	20,000.0	TON		
71	Trench Stabilization Rock	7,200.0	TON		
72	Reconstruct Existing Driveway	25.0	EA		
73	Seeding	6.0	AC		
74	Force Account	1.0	LS	\$500,000.00	\$500,000.00

City of Fruita
Bid Schedule
19 Road Improvement Project - Addendum 3
Project No. 130-750-77-4730

No.	Item Description	Quantity	Unit	Unit Cost	Extension
75	Large Tree Removal	25.0	EA		
76	8" SDR-35	51.0	LF		
77	Trail Asphalt	725.0	TON		
78	Highway Intersection Improvements	1.0	LS		
79	Irrigation MH 1B	1.0	EA		
80	36" CMP Culvert Extension	30.0	LF		

Total Base Bid Amount _____

Company Name: _____

By: _____

Signature: _____

Date: _____

Addendum 1 Acknowledgment: _____

Addendum 2 Acknowledgment: _____

Addendum 3 Acknowledgment: _____