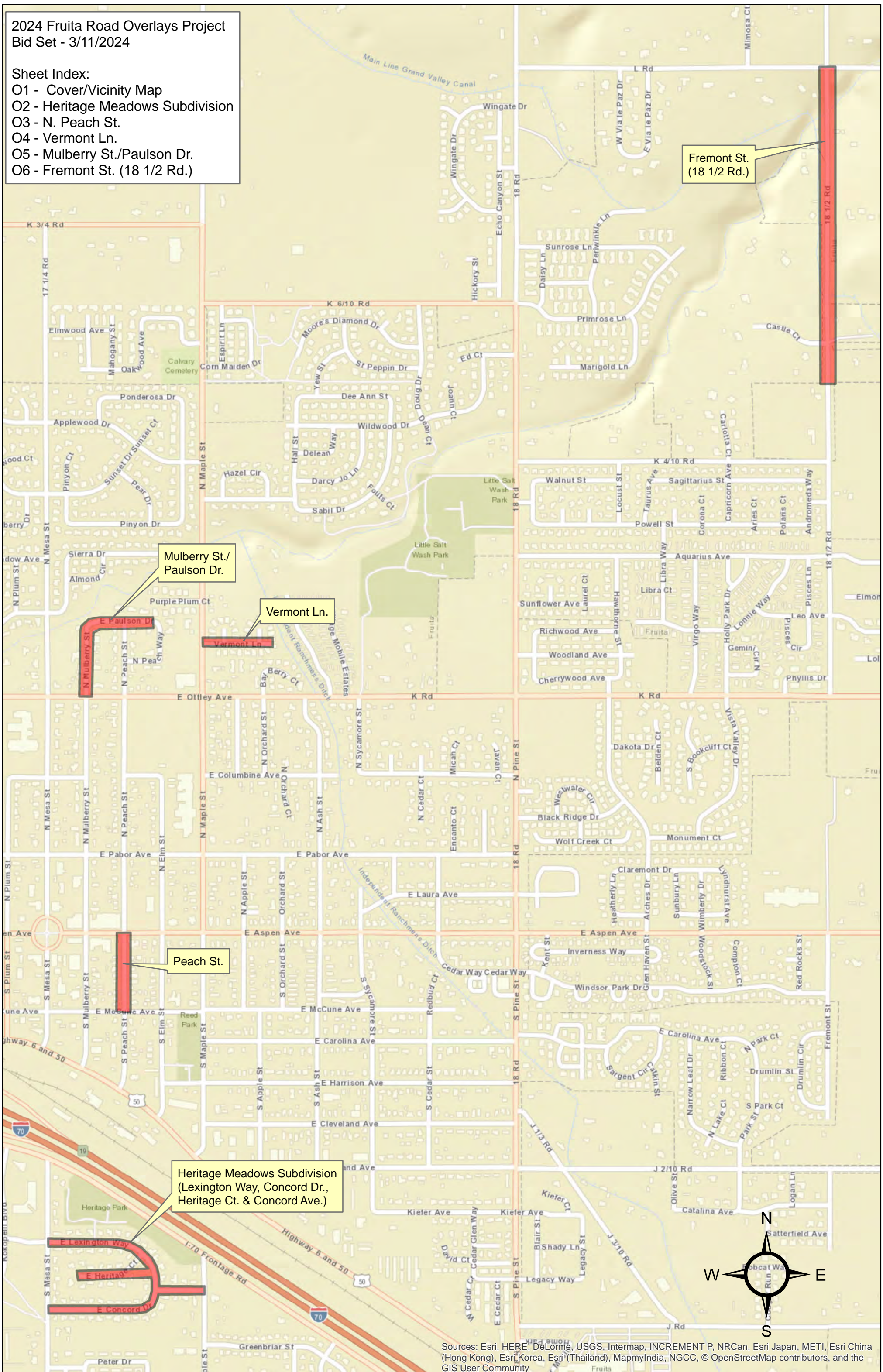


2024 Fruita Road Overlays Project  
 Bid Set - 3/11/2024

Sheet Index:

- O1 - Cover/Vicinity Map
- O2 - Heritage Meadows Subdivision
- O3 - N. Peach St.
- O4 - Vermont Ln.
- O5 - Mulberry St./Paulson Dr.
- O6 - Fremont St. (18 1/2 Rd.)



Fremont St.  
(18 1/2 Rd.)

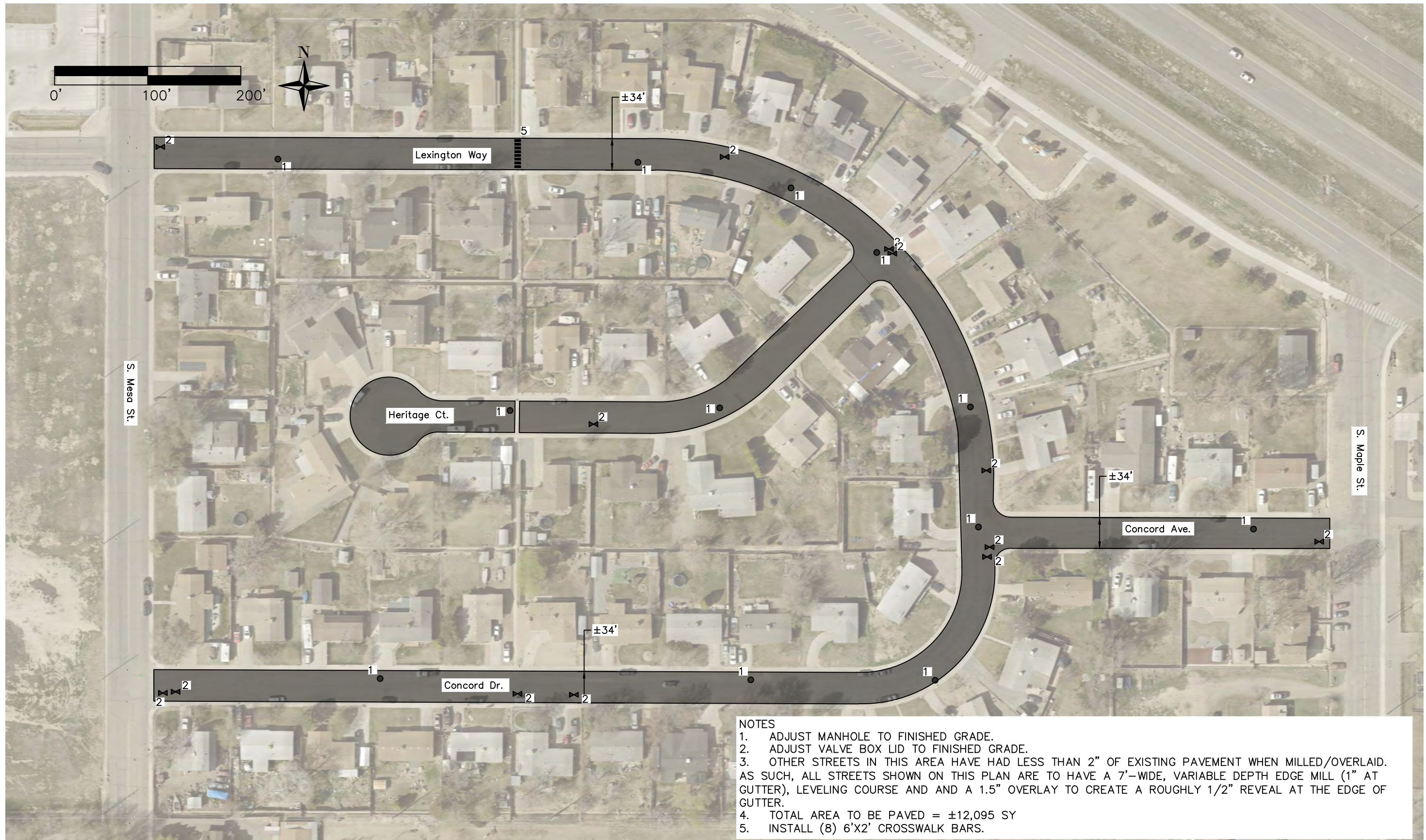
Mulberry St./  
Paulson Dr.

Vermont Ln.

Peach St.

Heritage Meadows Subdivision  
(Lexington Way, Concord Dr.,  
Heritage Ct. & Concord Ave.)

Sources: Esri, HERE, DeLorme, USGS, Intermap, INCREMENT P, NRCan, Esri Japan, METI, Esri China (Hong Kong), Esri Korea, Esri (Thailand), MapmyIndia, NGCC, © OpenStreetMap contributors, and the GIS User Community



**NOTES**

1. ADJUST MANHOLE TO FINISHED GRADE.
2. ADJUST VALVE BOX LID TO FINISHED GRADE.
3. OTHER STREETS IN THIS AREA HAVE HAD LESS THAN 2" OF EXISTING PAVEMENT WHEN MILLED/OVERLAID. AS SUCH, ALL STREETS SHOWN ON THIS PLAN ARE TO HAVE A 7'-WIDE, VARIABLE DEPTH EDGE MILL (1" AT GUTTER), LEVELING COURSE AND AND A 1.5" OVERLAY TO CREATE A ROUGHLY 1/2" REVEAL AT THE EDGE OF GUTTER.
4. TOTAL AREA TO BE PAVED = ±12,095 SY
5. INSTALL (8) 6'X2' CROSSWALK BARS.

Date: Mar 05, 2024 - 2:44pm  
 File: Y:\Capital Projects - 2024\Road Overlays\CAD\OVERLAYS.dwg



ENGINEERING DEPT.  
 325 East Aspen  
 Fruita, CO 81521  
 970-858-8377  
 WWW.FRUITA.ORG

SURVEYED BY: \_\_ DATE: \_\_  
 DRAWN BY: CLD DATE: 3/11/24  
 CHECKED BY: \_\_

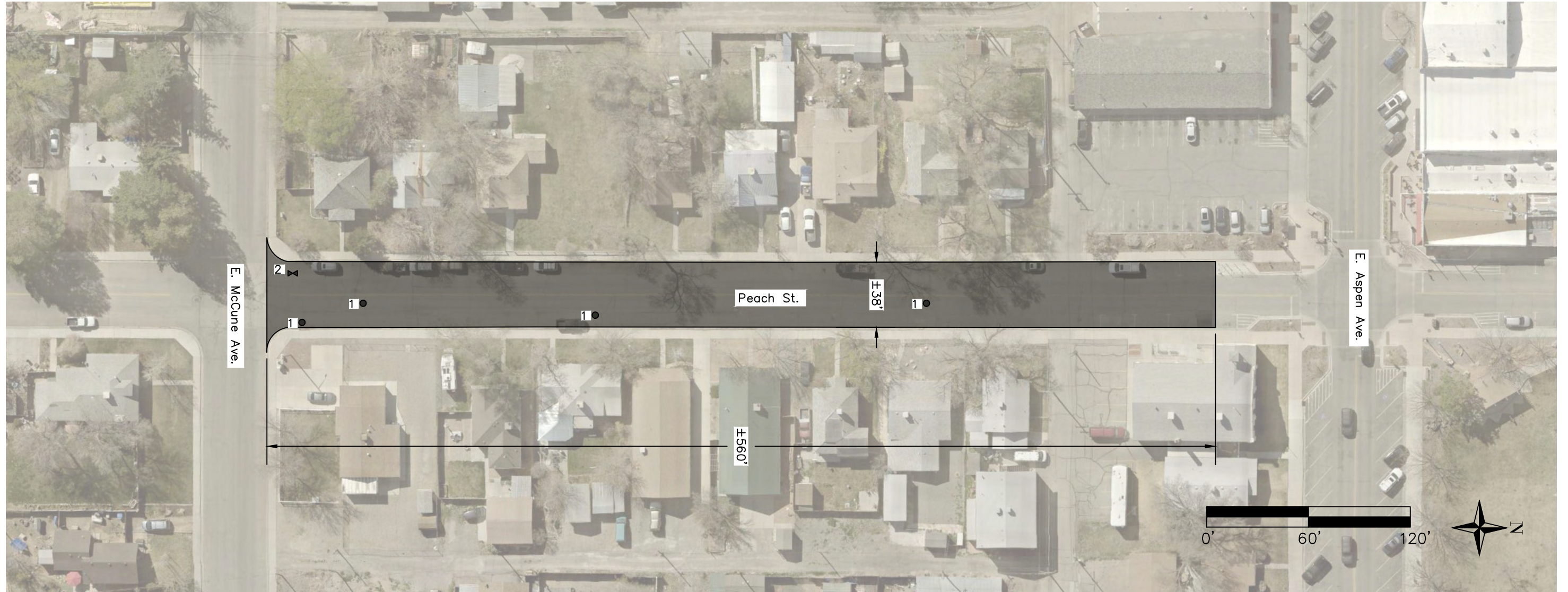
NO.	DATE	REVISION	BY

SCALE VERIFICATION  
 0 1  
 SCALE: As Shown  
 HORIZ: -  
 VERT: -  
 BAR IS 1-INCH ON ORIGINAL DRAWING.

2024 Fruita Road Overlays

Heritage Meadows Subdivision

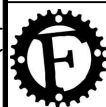
SHEET: 02



NOTES

1. ADJUST MANHOLE TO FINISHED GRADE.
2. ADJUST WATER VALVE TO FINISHED GRADE.
3. PEACH ST. TO HAVE A VARIABLE-DEPTH, 7'-WIDE EDGE MILL, LEVELING COURSE AND 2" OVERLAY.
4. INSTALL DOUBLE YELLOW CENTERLINE ALONG THE ENTIRE OVERLAID AREA (±600' OF DOUBLE 4" YELLOW).
5. INSTALL THERMOPLASTIC STOP BARS (±10 SF)
6. TOTAL AREA TO BE PAVED = ±2400 SY

Date: Mar 06, 2024 - 9:52am  
File: Y:\Capital Projects - 2024\Road Overlays\CAD\OVERLAYS.dwg



**FRUITA**  
COLORADO

ENGINEERING DEPT.  
325 East Aspen  
Fruita, CO 81521  
970-858-8377  
WWW.FRUITA.ORG

SURVEYED BY: \_\_ DATE: \_\_  
DRAWN BY: CLD DATE: 3/11/24  
CHECKED BY: \_\_

NO.	DATE	REVISION	BY
-	-	-	-
-	-	-	-
-	-	-	-
-	-	-	-
-	-	-	-

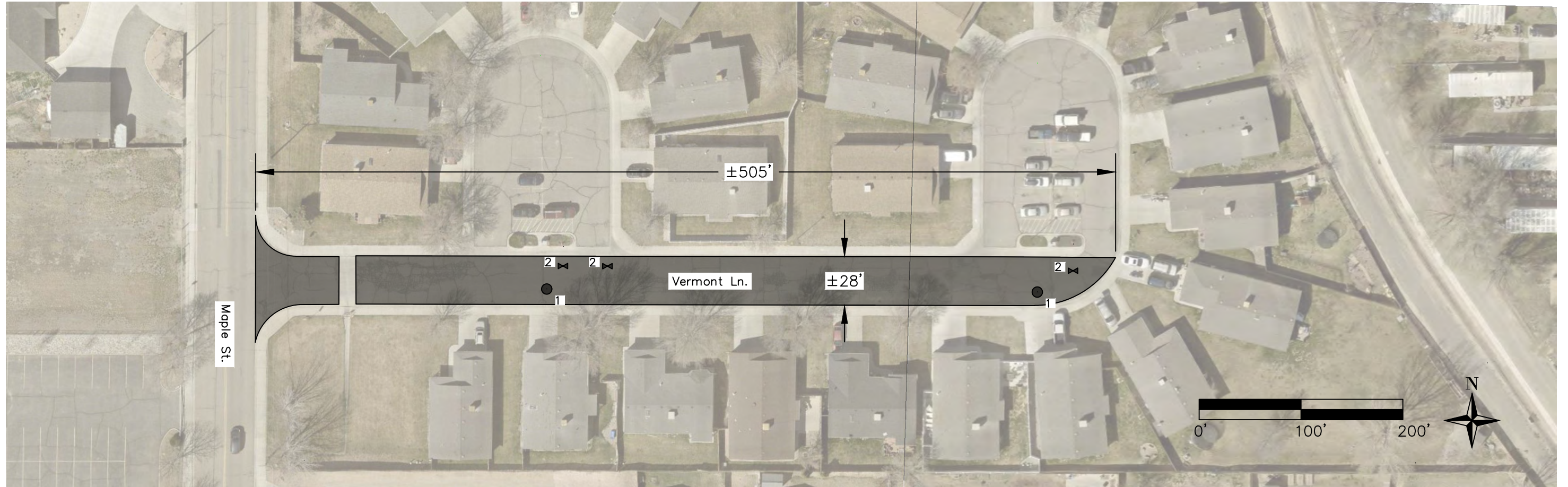
SCALE VERIFICATION  
0 1  
BAR IS 1-INCH ON ORIGINAL DRAWING.

SCALE: As Shown  
HORIZ: -  
VERT: -

2024 Fruita Road Overlays

N. Peach St.  
McCune Ave. to Aspen Ave.

SHEET:  
**03**



NOTES

1. ADJUST MANHOLE TO FINISHED GRADE.
2. ADJUST WATER VALVE LIDS TO FINISHED GRADE.
3. DO NOT MILL/PAVE CUL-DE-SAC PARKING AREAS.
4. VERMONT LANE TO HAVE A VARIABLE-DEPTH, 7'-WIDE EDGE MILL, LEVELING COURSE AND 2" OVERLAY.
5. TOTAL AREA TO BE PAVED = ±1560 SY


Date: Mar 05, 2024 - 2:45pm  
File: Y:\Capital Projects - 2024\Road Overlays\CAD\OVERLAYS.dwg



ENGINEERING DEPT.  
325 East Aspen  
Fruita, CO 81521  
970-858-8377  
WWW.FRUITA.ORG

SURVEYED BY: \_\_\_ DATE: \_\_\_  
DRAWN BY: CLD DATE: 3/11/24  
CHECKED BY: \_\_\_

NO.	DATE	REVISION	BY

SCALE VERIFICATION 0 1  
  
 BAR IS 1-INCH ON ORIGINAL DRAWING.  
 SCALE: As Shown  
 HORIZ: -  
 VERT: -

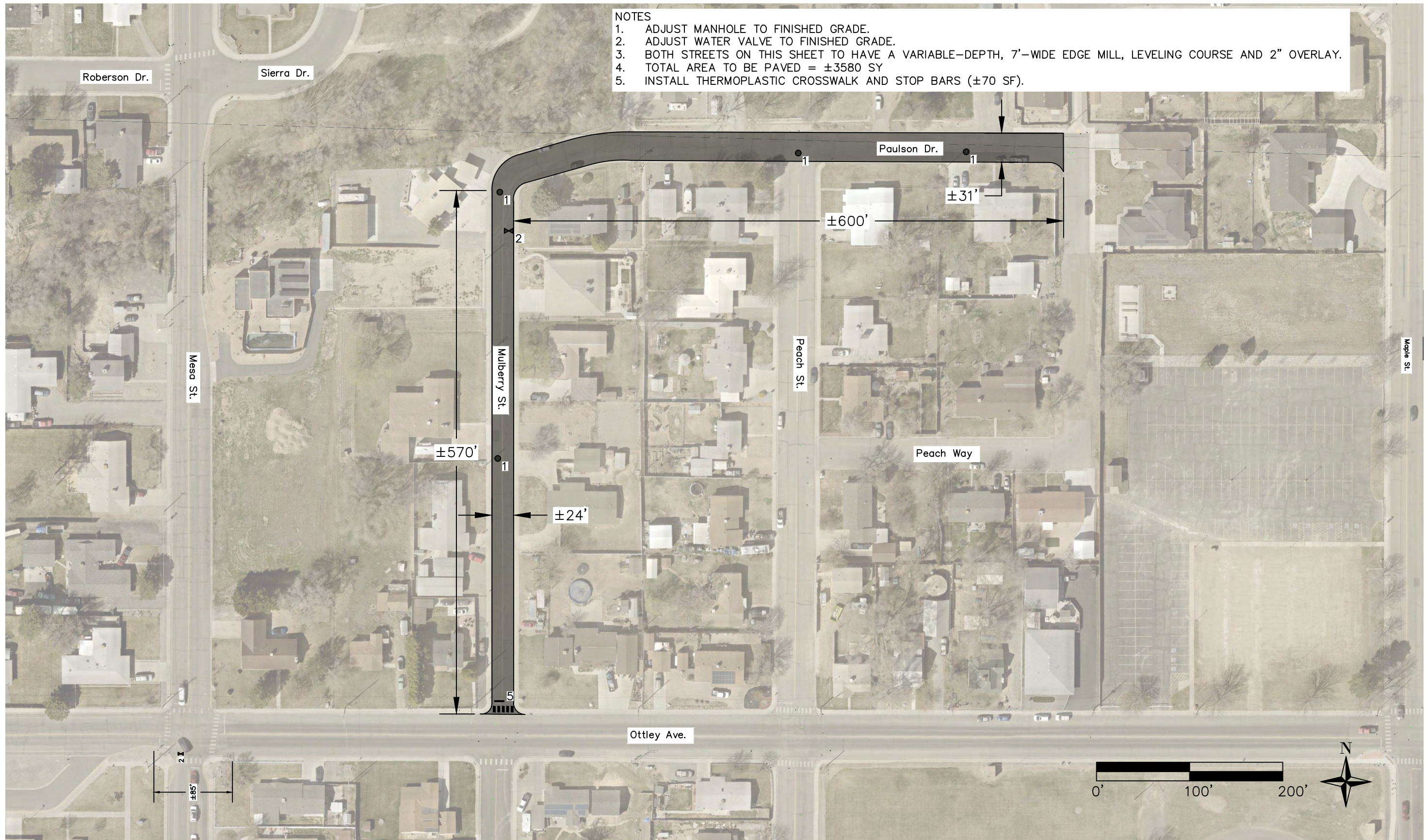
2024 Fruita Road Overlays

Vermont Lane  
N. Maple St. to End

SHEET:  
**03**

**NOTES**

1. ADJUST MANHOLE TO FINISHED GRADE.
2. ADJUST WATER VALVE TO FINISHED GRADE.
3. BOTH STREETS ON THIS SHEET TO HAVE A VARIABLE-DEPTH, 7'-WIDE EDGE MILL, LEVELING COURSE AND 2" OVERLAY.
4. TOTAL AREA TO BE PAVED = ±3580 SY
5. INSTALL THERMOPLASTIC CROSSWALK AND STOP BARS (±70 SF).



Date: Mar 05, 2024 - 4:24pm  
File: Y:\Capital Projects - 2024\Road Overlays\CAD\OVERLAYS.dwg



ENGINEERING DEPT.  
325 East Aspen  
Fruita, CO 81521  
970-858-8377  
WWW.FRUITA.ORG

SURVEYED BY: -- DATE: --  
DRAWN BY: CLD DATE: 3/11/24  
CHECKED BY: --

NO.	DATE	REVISION	BY

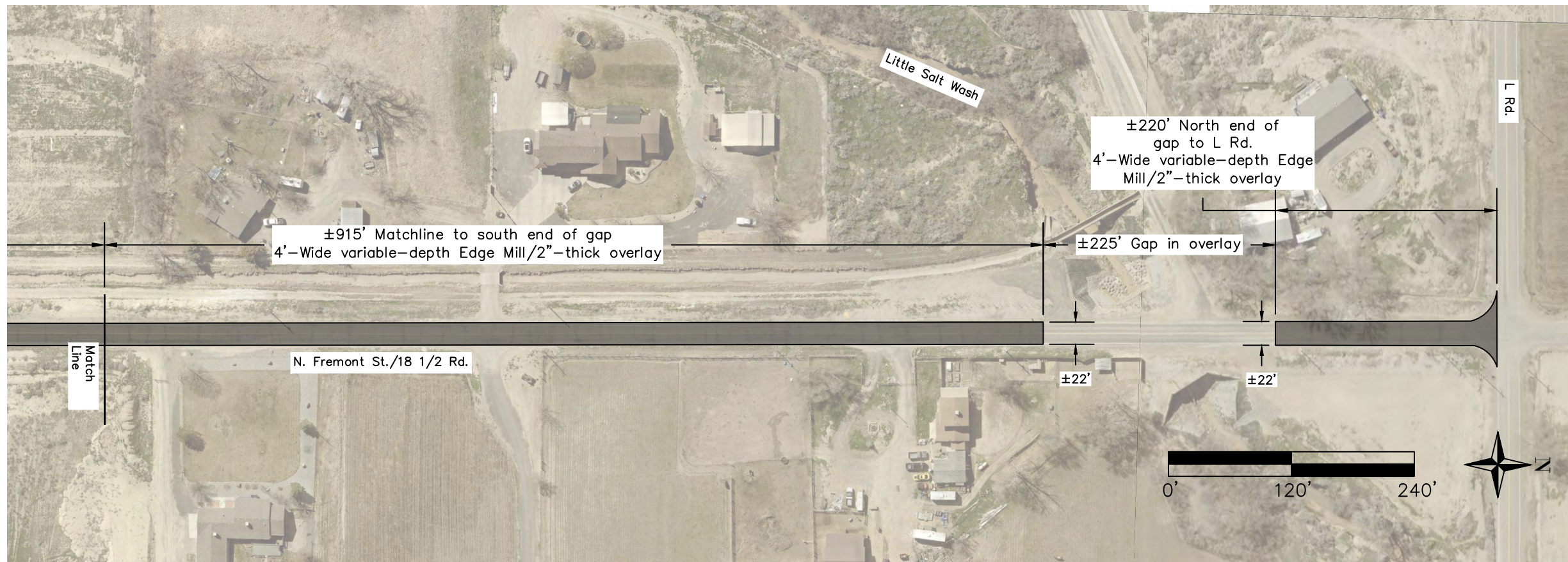
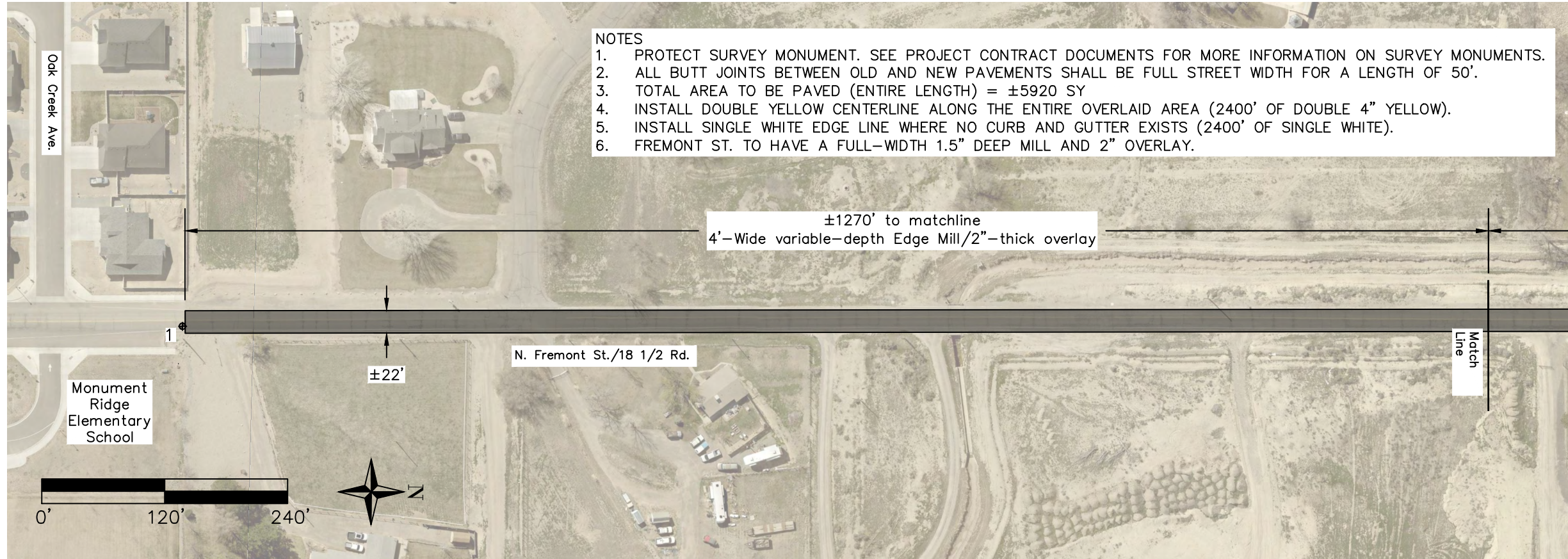
SCALE VERIFICATION  
0 1  
BAR IS 1-INCH ON ORIGINAL DRAWING.

SCALE: As Shown  
HORIZ: --  
VERT: --

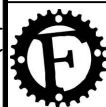
2024 Fruita Road Overlays

Mulberry St. & Paulson St.

SHEET: 05



Date: Mar 05, 2024 - 2:46pm  
File: Y:\Capital Projects - 2024\Road Overlays\CAD\OVERLAYS.dwg



**FRUITA**  
COLORADO

ENGINEERING DEPT.  
325 East Aspen  
Fruita, CO 81521  
970-858-8377  
WWW.FRUITA.ORG

SURVEYED BY: \_\_\_ DATE: \_\_\_  
DRAWN BY: CLD DATE: 3/11/24  
CHECKED BY: \_\_\_

NO.	DATE	REVISION	BY

SCALE VERIFICATION  
0 1  
BAR IS 1-INCH ON ORIGINAL DRAWING.

SCALE: As Shown  
HORIZ: \_\_\_  
VERT: \_\_\_

2024 Fruita Road Overlays

Fremont St.  
Elementary School to L Rd.

SHEET:  
**06**