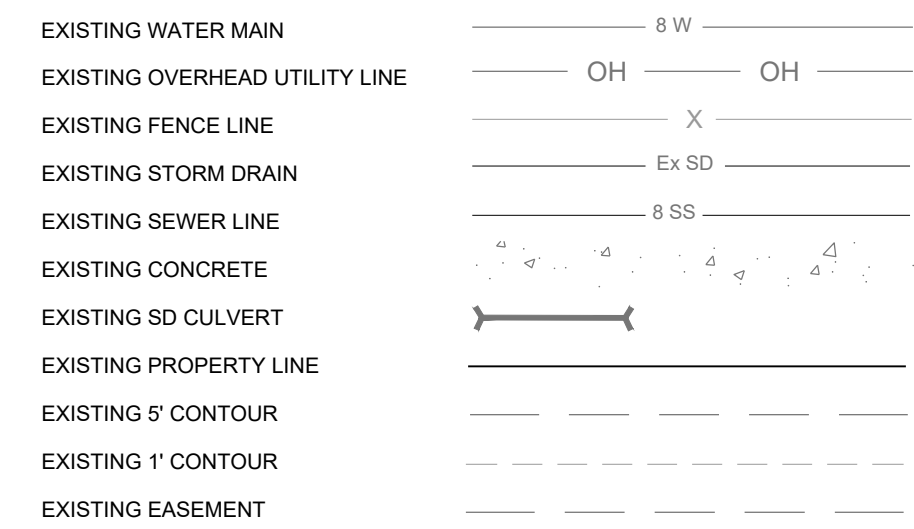


ABBREVIATIONS

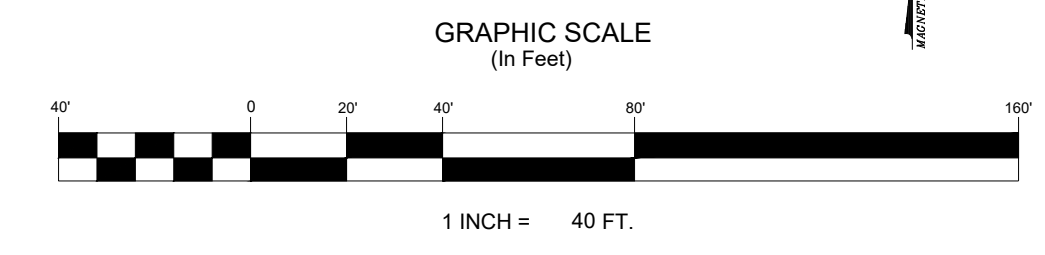
B.O.W. BACK OF WALK
 SS SANITARY SEWER
 SD STORM DRAIN
 EX EXISTING

SURVEY LEGEND (EXISTING)

- ALLOTMENT SURVEY MARKER, AS NOTED
- FOUND EVIDENCE, AS NOTED
- SET 2" ALUMINUM CAP ON 24" No. 5 REBAR, PLS 38146 FLUSH WITH SURFACE UNLESS OTHERWISE NOTED
- CALCULATED POSITION AT CENTERLINE OF DITCH
- 1.0' = Distance WC = Witness Corner - SE = Direction
- Rec. No. RECEPTION NUMBER
- Esmt. EASEMENT
- A.S. ABOVE SURFACE
- B.S. BELOW SURFACE
- MCSM MESA COUNTY SURVEY MARKER
- Alum. ALUMINUM
- OH-E OVERHEAD ELECTRIC LINE
- GUY WIRE(S)
- FENCE
- POWER POLE
- LIGHT POLE
- DRAINAGE PIPE
- ELECTRIC PEDESTAL OR TRANSFORMER
- TELEPHONE OR TELEVISION PEDESTAL
- TREE 24" DIAMETER
- MAILBOX
- GAS METER
- FIRE HYDRANT
- CONCRETE



100-YR FLOODPLAIN:
 THE PROPOSED SITE DOES NOT FALL WITHIN THE FEMA 100-YR FLOODPLAIN PER FEMA PANEL: 08077CC0439F



UTILITY VENDORS

| | | | |
|-------------------|-----------------------------------|-------------------------|-----------------|
| GAS | XCEL ENERGY | MIKE CASTRO | 244-2781 |
| ELECTRIC | GRAND VALLEY POWER | PERRY RUPP | 242-0040 |
| TELEPHONE | QWEST/CENTURYLINK | CHRIS JOHNSON | 244-4311 |
| WATER | UTE WATER DISTRICT | JIM DAUGHERTY | 242-7491 |
| STREETS | MESA COUNTY CHARTER | DAVE LIVINGSTON | 243-2041 |
| CABLE | G.V.D.D. | JEFF VALDEZ | 263-2314 |
| DRAINAGE | G.V.I.C. | TIM RYAN | 242-4343 |
| IRRIGATION | LOWER VALLEY FIRE DISTRICT | CHARLIE GUENTHER | 242-2762 |
| FIRE | | TRAVIS HOLDER | 858-3133 |

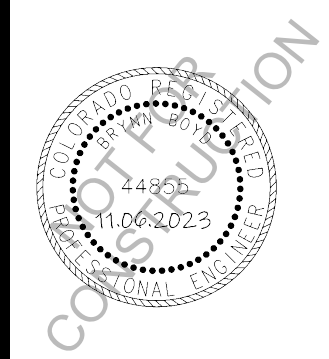
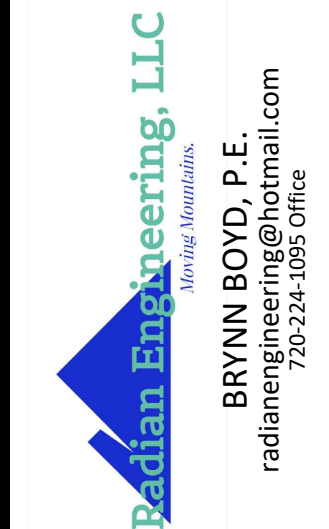
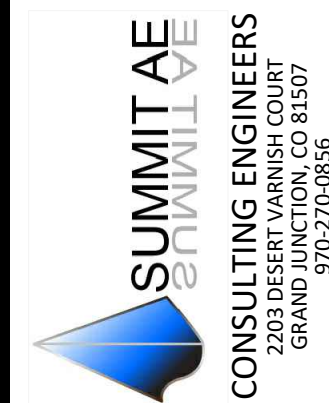
PLAN TAG NOTES:

- 1 EXISTING FIRE HYDRANT.
 - 2 EXISTING STREET LIGHT.
 - 3 EXISTING 8" WATER MAIN (VERIFY UTE WATER).
 - 4 EXISTING 2" WATER MAIN (VERIFY UTE WATER).
- ALL UTILITIES SHOWN ARE EXISTING PER THE DIRECTION: CITY OF FRUITA ENGINEERING.



BENCHMARK:
 Southwest Corner
 NW 1/4 SW 1/4, Section 16
 MCSM #1214-2
 3.25" Alum. Cap, PLS 20677
 0.3" B.S. in Range Box
 Elevation 4515.16 NAVD 88

REFERENCE SHEET
 C0.3 FOR GENERAL LEGEND
 & ABBREVIATIONS



| # | REVISION DESCRIPTION | DATE |
|---|----------------------|------|
| | | |
| | | |
| | | |

J ROAD SUBDIVISION
 CITY OF FRUITA, COLORADO
UTILITY COMPOSITE PLAN
PRELIMINARY

PROJ.# 23250
 DESIGNED BY BMB | GMR
 DOCUMENTED BY GMR
 DATE 11/07/23
 DRAWING NUMBER
C1.2