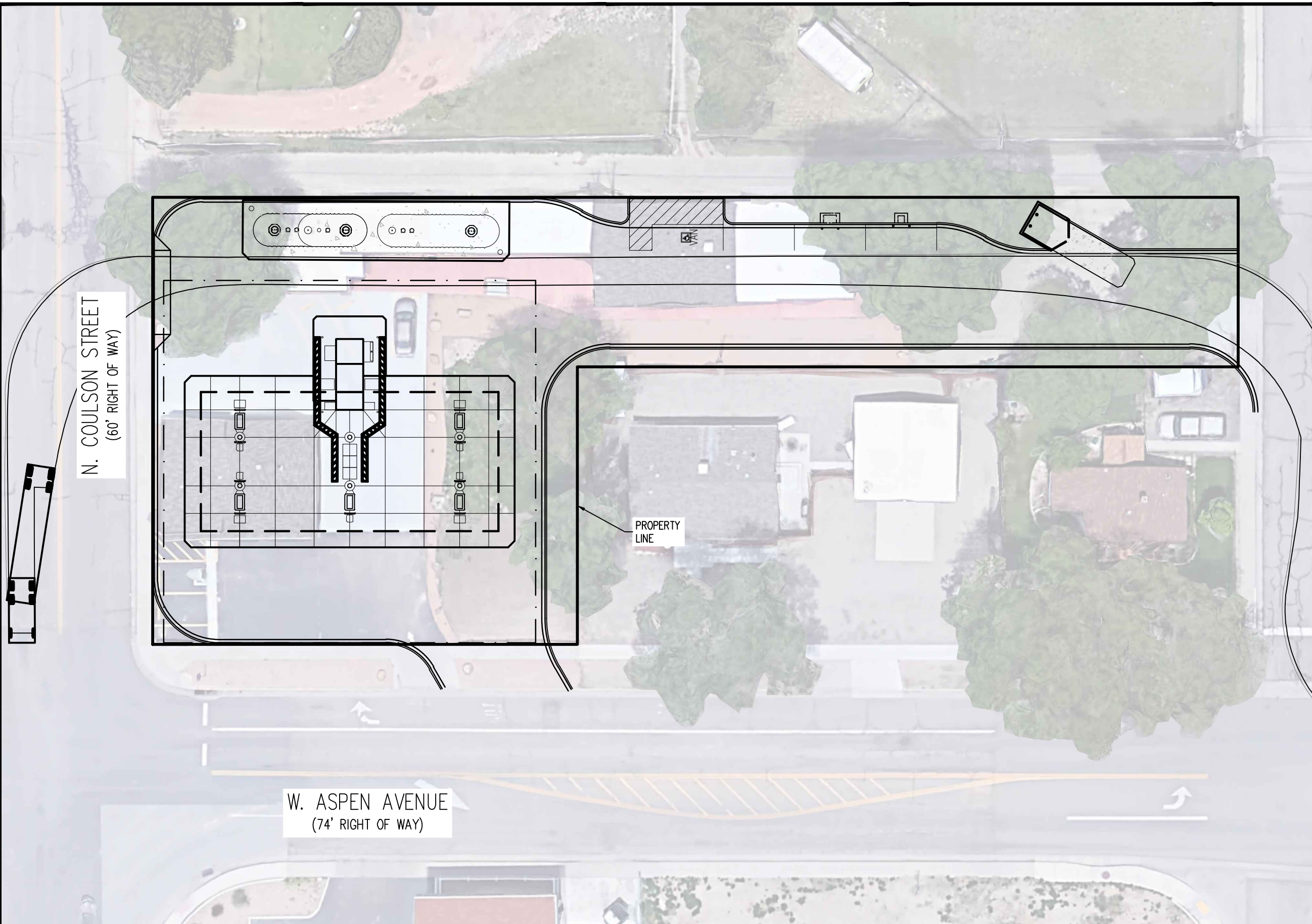
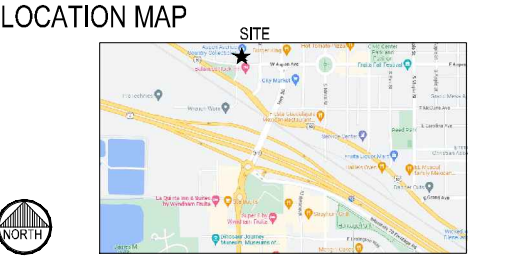


**COPYRIGHT**  
THESE PLANS ARE AN INSTRUMENT OF SERVICE AND ARE THE PROPERTY OF GALLOWAY, AND MAY NOT BE DUPLICATED, DISCLOSED, OR REPRODUCED WITHOUT THE WRITTEN CONSENT OF THE ARCHITECT. COPYRIGHTS AND INFRINGEMENTS WILL BE ENFORCED AND PROSECUTED.



**PROJECT INFORMATION**

**SITE**  
 FUEL PAD: 11,790 SF | +/-0.24 AC  
 FUEL CANOPY WITH KIOSK - 5-MPD  
 ZONING - DOWNTOWN MIXED USE  
 \*GASOLINE STATION IS A CONDITIONAL USE  
 SIGNAGE - TBD

- NOTES -**
- ALL AREAS PROVIDED AND PROPERTIES DELINEATED ARE APPROXIMATE AND WILL NEED TO BE VERIFIED.
  - PLAN FOR ILLUSTRATIVE PURPOSES ONLY.

Project No:	HSN11.20	8/23/23
Drawn By:	JKG	
Checked By:	CTS	

**King Soopers Fuel**  
 FRUITA, CO  
 437 W. ASPEN AVENUE

**Concept B2** | 1 of 1

