

LIGHT POLE DETAIL

NOT TO SCALE

- NOTES:
1. VERIFY THE BURY DEPTH AND DIAMETER OF THE SONOTUBE WITH THE CIVIL ENGINEER PRIOR TO PURCHASING THE EQUIPMENT. DEPTH WILL DEPEND ON SOIL CONDITIONS. TYPICAL CONCRETE DEPTH IS 5 FT.
 2. THE ELECTRICAL CONTRACTOR IS TO INSTALL VIBRATION DAMPERS IN ALL POLES. OBTAIN DAMPERS FROM POLE MANUFACTURER FOR EACH ALUMINUM POLE.
 3. ALL OUTSIDE LIGHT SOURCES SHALL COMPLY WITH THE LOCAL ZONING AND DEVELOPMENT CODES.
 4. NOTIFY ENGINEER OF ANY OBSTRUCTIONS TO POLE PLACEMENT IMMEDIATELY BEFORE PROCEEDING.

LIGHTING - SITE PLAN

SCALE: 1"=30'-0"

NORTH

SITE LIGHTING LUMINAIRE SCHEDULE					
TYPE	MANUFACTURER CATALOG NO.	MANUFACTURER EQUIVALENT	VOLTAGE MOUNTING	LAMP SPECIFICATION	DESCRIPTION
SP1	McGRAW - EDISON GLNA-AF-02-LED-E1-SL4-BZ-MS/ DIM-L40 - FSIR-100	APPROVED EQUIVALENT	120-277V 12'-0" POLE ON FLUSH BASE	2 LED LIGHT SQ. DIMMING, 10903LM, 3000K, 70CRI, 113W	GALLEONNAIRE AREA POLE MOUNTED LIGHT, MOUNT ON ROUND POLE, BRONZE FINISH, DIMMING MOTION SENSING, WIRELESS CONFIGURATION TOOL
SP1-1	McGRAW - EDISON GLNA-AF-02-LED-E1-SL4-BZ-MS/ DIM-L40 - FSIR-100	APPROVED EQUIVALENT	120-277V 20'-0" POLE ON 2'-0" BASE	2 LED LIGHT SQ. DIMMING, 10903LM, 3000K, 70CRI, 113W	GALLEONNAIRE AREA POLE MOUNTED LIGHT, MOUNT ON ROUND POLE, BRONZE FINISH, DIMMING MOTION SENSING, WIRELESS CONFIGURATION TOOL
SP2	McGRAW - EDISON GLNA-AF-02-LED-E1-5WQ-BZ-MS/ DIM-L40 - FSIR-100	APPROVED EQUIVALENT	120-277V 20'-0" POLE ON 2'-0" BASE	1050mA LED DIMMING, 12066LM, 3000K, 70CRI, 113W	GALLEONNAIRE AREA POLE MOUNTED LIGHT, MOUNT ON ROUND POLE, BRONZE FINISH, DIMMING MOTION SENSING, WIRELESS CONFIGURATION TOOL
SW1	FC LIGHTING FCC600R-12-WM-UNV-930-20L BRE-72-LD	APPROVED EQUIVALENT	120-277V EXTERIOR WALL	0-10V LED DIMMING, 2297LM, 3000K, 93CRI, 60W	6" ROUND EXTERIOR WALL MOUNTED CYLINDER, 72" WIDE FLOOD LIGHT DISTRIBUTION, BRONZE FINISH
SW2	FC LIGHTING FCC600R-12-WM-UNV-930-30L BRE-72-LD	APPROVED EQUIVALENT	120-277V EXTERIOR WALL	0-10V LED DIMMING, 3000LM, 3000K, 93CRI, 60W	6" ROUND EXTERIOR WALL MOUNTED CYLINDER, 72" WIDE FLOOD LIGHT DISTRIBUTION, BRONZE FINISH
SW3	LUMARK LIGHTING AXCS2A-MSP/DIM-L12	APPROVED EQUIVALENT	120-277V EXTERIOR WALL	0-10V LED DIMMING, 2561LM, 4000K, 21W	ACCENT WALL MOUNTED LED FIXTURE, CARBON BRONZE FINISH

- NOTES:
1. THE ELECTRICAL CONTRACTOR IS TO ORDER ALL HARDWARE AND COMPONENTS NECESSARY FOR A FULL AND COMPLETE INSTALLATION AND MOUNTING OF ALL LUMINAIRE.
 2. ALL POLES TO BE STRAIGHT POLE. COLOR TO MATCH LUMINAIRE. POLE SHAFT WILL BE RATED FOR WIND GUSTS OF 100 MILES/HOUR.
 3. ALL OUTSIDE LIGHT SOURCES SHALL CONFORM TO ALL LOCAL MUNICIPAL ZONING & DEVELOPMENT CODES, LIGHT TRESPASS AND DARK SKY INITIATIVES.
 4. ALL EXTERIOR BUILDING MOUNTED AND PARKING LOT LIGHTS ARE TO BE CONTROLLED THRU A PHOTOCELL, TIME CLOCK OR AUTOMATIC CONTROL SYSTEM FOR ALL NIGHT OPERATION.
 5. NOTIFY ENGINEER OF ANY OBSTRUCTIONS TO POLE PLACEMENT IMMEDIATELY BEFORE PROCEEDING.
 6. ORDER ALL EXTERIOR LUMINAIRE WITH MULTI-TAP BALLAST AND FIELD VERIFY AVAILABLE VOLTAGE FOR EACH LUMINAIRE PRIOR TO INSTALLATION.
 7. COORDINATE THE MOUNTING OF ALL EXTERIOR WALL MOUNTED FIXTURES WITH THE ARCHITECTURAL FLOOR PLANS AND EXTERIOR ELEVATION.

DO NOT REPRODUCE THESE DRAWINGS AND SPECIFICATIONS WITHOUT THE EXPRESSED WRITTEN PERMISSION OF THE DESIGNER. THE DRAWINGS AND SPECIFICATIONS ARE INSTRUMENTS OF THE SERVICE AND SHALL REMAIN THE PROPERTY OF THE DESIGNER. WHETHER THE PROJECT FOR WHICH THEY ARE MADE IS EXECUTED OR NOT. THESE DRAWINGS AND SPECIFICATIONS SHALL NOT BE USED BY ANYONE ON ANY OTHER PROJECTS FOR ADDITIONS TO THIS PROJECT BY OTHERS EXCEPT BY THE EXPRESSED WRITTEN PERMISSION OF THE DESIGNER.

Bighorn Consulting Engineers, Inc.
Mechanical & Electrical Engineers
386 Indian Road
Grand Junction, CO 81501
Phone: (970) 241-8709

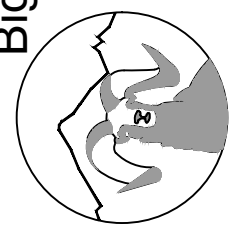
**WILD CAT AVENUE
MULTI - FAMILY
1807 WILDCAT AVENUE
FRUITA, COLORADO**

DATE: 09/25/2023
ISSUED FOR:

DATE: 09/25/2023
JOB NO: 23-222
DRAWN BY: BCE
CHECKED BY: BCE
SCALE: AS SHOWN
SHEET NUMBER: ES1-1

DO NOT REPRODUCE THESE DRAWINGS AND SPECIFICATIONS WITHOUT THE EXPRESSED WRITTEN PERMISSION OF THE DESIGNER. THE DRAWINGS AND SPECIFICATIONS ARE INSTRUMENTS OF SERVICE AND SHALL REMAIN THE PROPERTY OF THE DESIGNER. WHETHER THE PROJECT FOR WHICH THEY ARE MADE IS EXECUTED OR NOT, THESE DRAWINGS AND SPECIFICATIONS SHALL NOT BE USED BY ANYONE ON ANY OTHER PROJECTS FOR ADDITIONS TO THIS PROJECT BY OTHERS EXCEPT BY THE EXPRESSED WRITTEN PERMISSION OF THE DESIGNER.

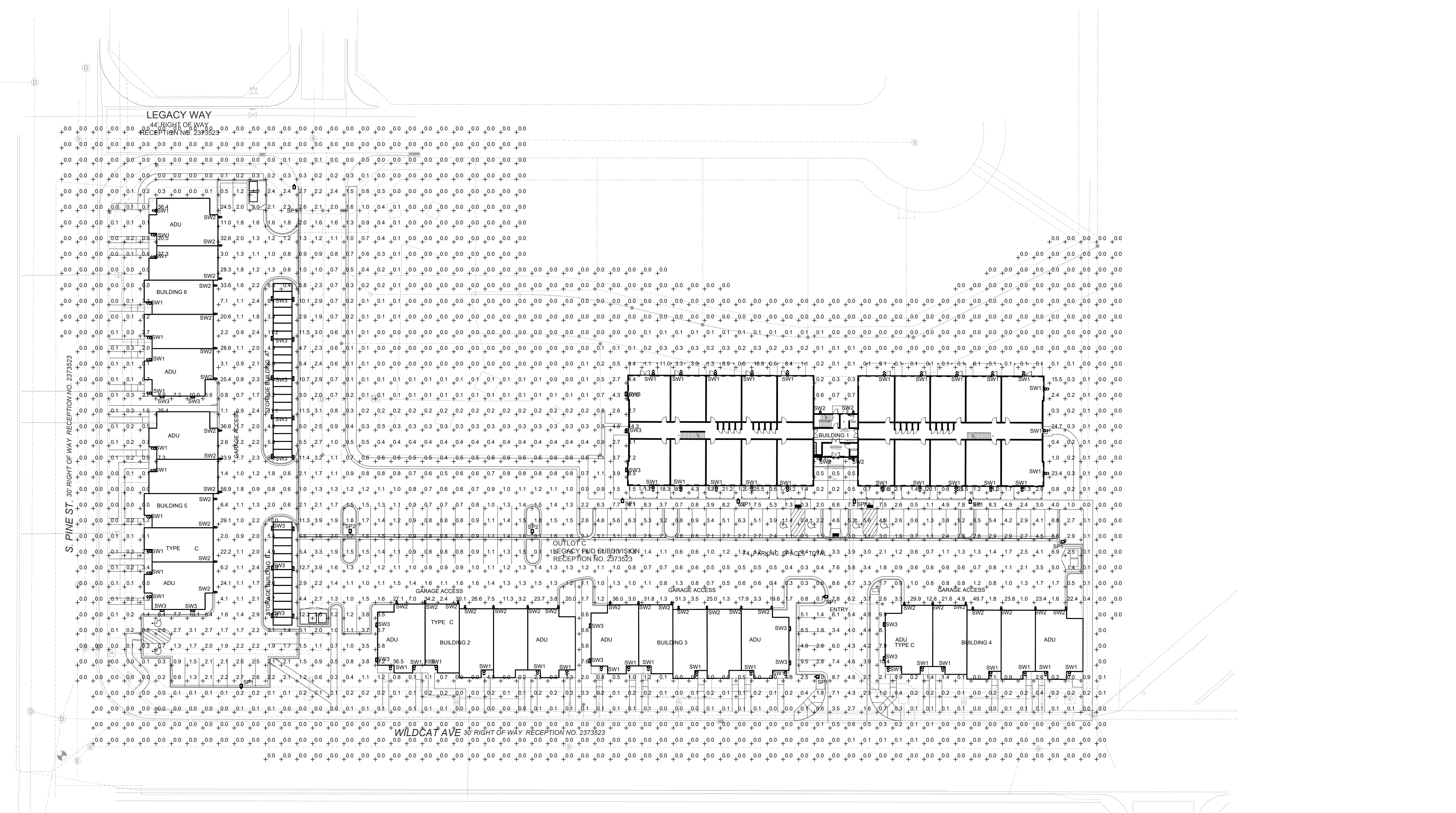
Bighorn Consulting Engineers, Inc.
 Mechanical & Electrical Engineers
 386 Indian Road
 Grand Junction, CO 81501
 Phone: (970) 241-8709



**WILD CAT AVENUE
 MULTI-FAMILY
 1807 WILDCAT AVENUE
 FRUITA, COLORADO**

DATE:	ISSUED FOR:
09/25/2023	

DATE:	09/25/2023
JOB NO.:	23-222
DRAWN BY:	BCE
CHECKED BY:	BCE
SCALE:	AS SHOWN
SHEET NUMBER:	IES1-1



LIGHTING - IES FOOTCANDLE SITE PLAN
 SCALE: 1"=30'-0"
 NORTH

PHOTOMETRIC CALCULATION DISCLAIMER:
 LIGHTING PATTERN USED FOR LUMINAIRES REPRESENTS ILLUMINATION LEVELS CALCULATED FROM LABORATORY DATA TAKEN UNDER CONTROLLED CONDITIONS IN ACCORDANCE WITH ILLUMINATING ENGINEERING SOCIETY APPROVED METHODS. ACTUAL PERFORMANCE OF ANY LUMINAIRE MAY VARY DUE TO VARIATION IN VOLTAGE, TOLERANCE IN LAMPS AND OTHER VARIABLE FIELD AND EQUIPMENT CONDITIONS.

- EXTERIOR LIGHTING NOTES:**
- LIGHT FIXTURES SHALL BE INSTALLED AND MAINTAINED IN A MANNER CONSISTENT WITH THE LIGHTING PLAN APPROVED BY THE CITY PLANNING DEPARTMENT. THE PROPERTY OWNER SHALL BE RESPONSIBLE FOR THE PROPER MAINTENANCE OF THE LIGHTING FIXTURES ON THEIR PROPERTY.
 - REFER TO LANDSCAPE PLANS FOR MATURE HEIGHT OF EXISTING AND PROPOSED TREES.
 - REFER TO ARCHITECTURAL ELEVATIONS FOR BUILDING HEIGHT INFORMATION.
 - ALL EXTERIOR LIGHT FIXTURES SHALL BE OPERATED BY ASTRONOMICAL TIME CLOCK, PHOTOCELL OR LIGHTING CONTROL SYSTEM.
 - POST-CURFEW LIGHT LEVELS FOR PARKING LOTS SHALL BE REDUCED BY AT LEAST 50%. ENTRY LIGHTS MAY BE LEFT ON.
 - FACILITIES & SITE DEVELOPMENT OF THIS SITE ARE TO BE CONSTRUCTED IN ACCORDANCE WITH CITY CONSTRUCTION SPECIFICATIONS, STANDARDS AND DETAILS.
 - ALL OUTSIDE LIGHT SOURCES SHALL CONFORM TO ALL LOCAL ZONING & DEVELOPMENT CODES.
 - PARKING LOT LIGHTS SHALL OPERATE DUSK TO PRE-SET OFF, SO THAT THEY EXTINGUISH ONE HOUR AFTER CLOSE OF BUSINESS OR NO LATER THAN 10 P.M. BUILDING SECURITY LIGHTS WILL OPERATE FROM DUSK TO DAWN.

- EXTERIOR LIGHTING DESIGN CONCEPTS:**
- CALCULATIONS ARE USING POINT-TO-POINT METHOD WITH TEN FEET DISTANCE BETWEEN CALCULATION GRID POINTS, USING VISUAL LIGHTING CALCULATIONS SOFTWARE.
 - THE IESNA STANDARDS REPRESENT THE LOWEST ACCEPTABLE LEVELS FOR PROPER VISIBILITY AND RECOMMEND MINIMUM MAINTAINED LIGHT LEVELS FOR OPEN PARKING LOTS AT 0.2-0.5 FOOT CANDLE LEVELS FOR ENHANCED SECURITY CONDITIONS.
 - PROPOSED LIGHT FIXTURES AND LIGHT LEVELS ARE TO BE IN ACCORDANCE WITH ALL LOCAL REQUIREMENTS.

ACCEPTANCE BLOCK
 THE CITY REVIEW CONSTITUTES GENERAL COMPLIANCE WITH THE CITY'S DEVELOPMENT STANDARDS, SUBJECT TO THESE PLANS BEING SEALED, SIGNED, AND DATED BY THE PROFESSIONAL OF RECORD. REVIEW BY THE CITY DOES NOT CONSTITUTE APPROVAL OF THE PLAN DESIGN. THE CITY NEITHER ACCEPTS NOR ASSUMES ANY LIABILITY FOR ERRORS OR OMISSIONS. ERRORS IN THE DESIGN OR CALCULATIONS REMAIN THE RESPONSIBILITY OF THE PROFESSIONAL OF RECORD. CONSTRUCTION MUST COMMENCE WITHIN ONE YEAR FROM THE DATE OF PLAN SIGNATURE.

CITY DEVELOPMENT ENGINEER _____ DATE _____

CITY PLANNER _____ DATE _____