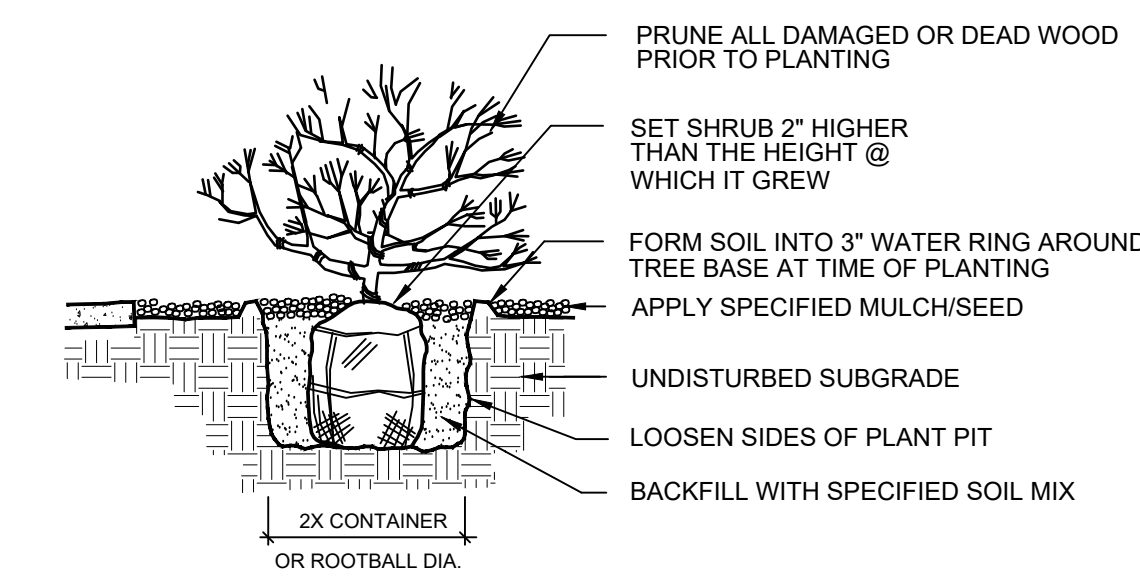


A Tree Planting Detail
SCALE: NTS

LANDSCAPE AND IRRIGATION NOTES

- Planting areas are to have 3" Landscape Rock over landscape fabric. Approve landscape rock with owner. All plant material shall have a planting ring at the base of each plant with 3" of western red cedar mulch over landscape fabric.
- An underground, pressurized irrigation system will be provided. All planting beds are to be irrigated with an automatic drip system and turf areas with a pop-up spray system.
- Steel edging is to be installed along the edge of the landscape rock areas.
- Landscape boulders shall be 2' to 4' granite rock boulders.
- All planting areas shall receive 4" to 6" of planting soil prior to planting.
- The landscape contractor shall collect soils samples and run soils testing for the proposed planting areas. Add soil amendments and fertilizers as recommended in the soil testing report to ensure a good planting medium. Any imported planting soil shall also be tested and be three parts screened topsoil and one part manure.



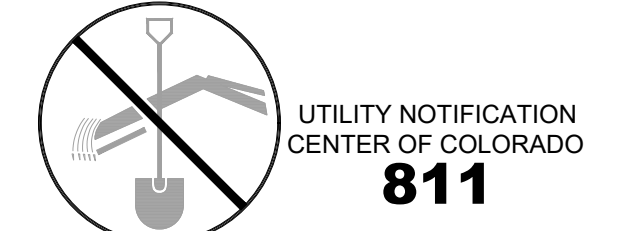
B Shrub Planting Detail
SCALE: NTS

SOIL PREPARATION AND PLANTING SPECIFICATIONS

- PREPARATION - GENERAL**
 - Lay out individual tree and shrub locations and areas for multiple plantings. Stake locations and outline areas and secure Architect's acceptance before start of planting work. Make minor adjustments as may be required.
- PREPARATION OF PLANTING SOIL**
 - The landscape contractor shall collect soils samples and run soils testing for the proposed planting areas. Add soil amendments and fertilizers as recommended in the soil testing report to ensure a good planting medium. Delay mixing any fertilizer if planting will not follow placing of planting soil within a few days.
 - Any imported planting soil shall also be tested and be three parts screened topsoil and one part manure.
 - Before mixing, clean topsoil of roots, plants, stones, clay lumps, and other extraneous materials harmful or toxic to plant growth.
 - For pit and trench type backfill, mix planting soil prior to backfilling, and stockpile at site.
 - For planting beds mix planting soil either prior to planting or apply on surface of topsoil and mix thoroughly before planting.
- PREPARATION OF PLANTING BEDS**
 - Spread planting soil mixture to minimum depth required to meet lines, grades, and elevations shown, after light rolling and natural settlement. Place approximately 1/2 of total amount of planting soil required. Work into top of loosened subgrade to create a transition layer, then place remainder of the planting soil.
 - Remove 6 inches to 10 inches of soil and replace with prepared planting soil mixture. Backfill for each bed with three parts topsoil and one part manure thoroughly mixed prior to placing.
- EXCAVATION FOR TREES AND SHRUBS**
 - Excavate pits, beds, and trenches with vertical sides and with bottom of excavation slightly raised at center to provide proper drainage. Loosen hard subsoil in bottom of excavation.
 - For balled and burlapped trees, make excavations at least half again as wide as the ball diameter and equal to the ball depth, plus following allowance for setting of ball on a layer of compacted backfill.
 - Allow for 3 inch thick setting layer of planting soil mixture.
 - For container grown stock, excavate as specified for balled and burlapped stock, adjusted to size of container width and depth.
 - Dispose of subsoil removed from planting excavations. Do not mix with planting soil or use as backfill.
 - Fill excavations for trees and shrubs with water and allow water to percolate out prior to planting.
 - Backfill pits with three parts topsoil and one part manure thoroughly mixed prior to placing.
 - Place Agriform tablets in planting pit prior to backfilling at the following rate: three per each tree, one per each shrub.
- PLANTING TREES AND SHRUBS**
 - Set balled and burlapped (B&B) stock on layer of compacted planting soil mixture, plumb and in center of pit or trench with top of ball at same elevation as adjacent finished landscape grades. Remove burlap from sides of balls; retain on bottoms. When set, place additional backfill around base and sides of ball, and work each layer to settle backfill and eliminate voids and air pockets. When excavation is approximately 2/3 full, water thoroughly before placing remainder of backfill. Repeat watering until no more is absorbed. Water again after placing final layer of backfill.
 - Set container grown stock, as specified, for balled and burlapped stock, except out cans on 2 sides with an approved can cutter an from plantball so as not to damage root balls.
 - Dish top of backfill to allow for mulching.
 - Apply anti-desiccant, using power spray, to provide an adequate film over trunks, branches, stems, twigs and foliage.
 - If deciduous trees or shrubs are moved when in full-leaf, spray with anti-desiccant at nursery before moving and spray again 2 weeks after planting.
 - Remove and replace excessively pruned or misformed stock resulting from improper pruning.
 - Wrap tree trunks of 2 inches caliper and larger, start at ground and cover trunk to height of first branches and securely attach. Inspect tree trunks for injury, improper pruning and insect infestation and take corrective measures before wrapping.
 - Guy and stake trees immediately after planting, as indicated.

MRLA MITCH REWOLD LANDSCAPE ARCHITECT
LANDSCAPE ARCHITECTURE AND
LAND PLANNING

386 3/4 Road
Palisade, Colorado 81526 (970) 361-4345

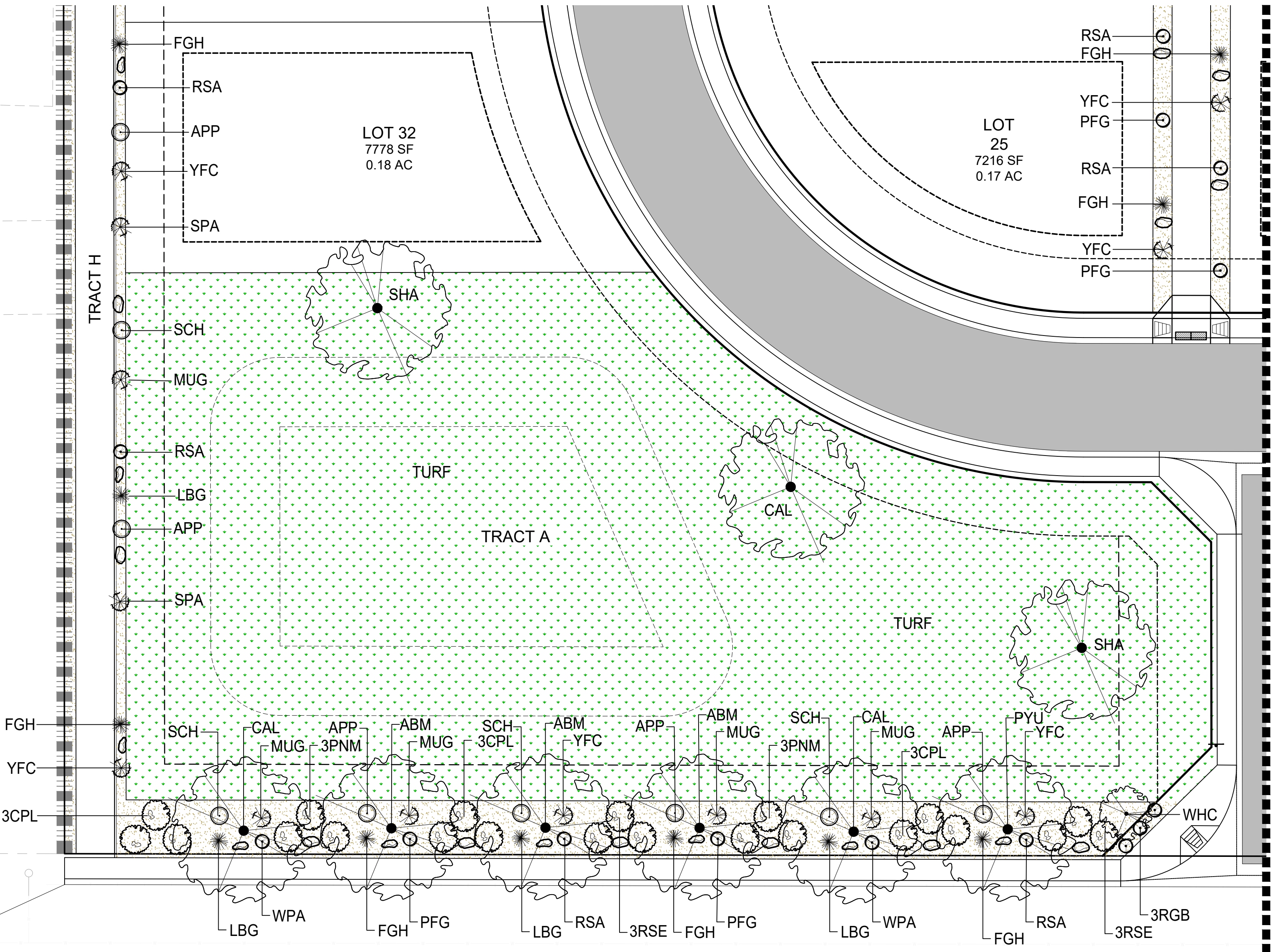


LOCATION OF UTILITIES SHOWN HEREON WAS PROVIDED BY OTHERS. CONTRACTOR MUST VERIFY LOCATION OF ALL EXISTING UTILITIES PRIOR TO CONSTRUCTION.

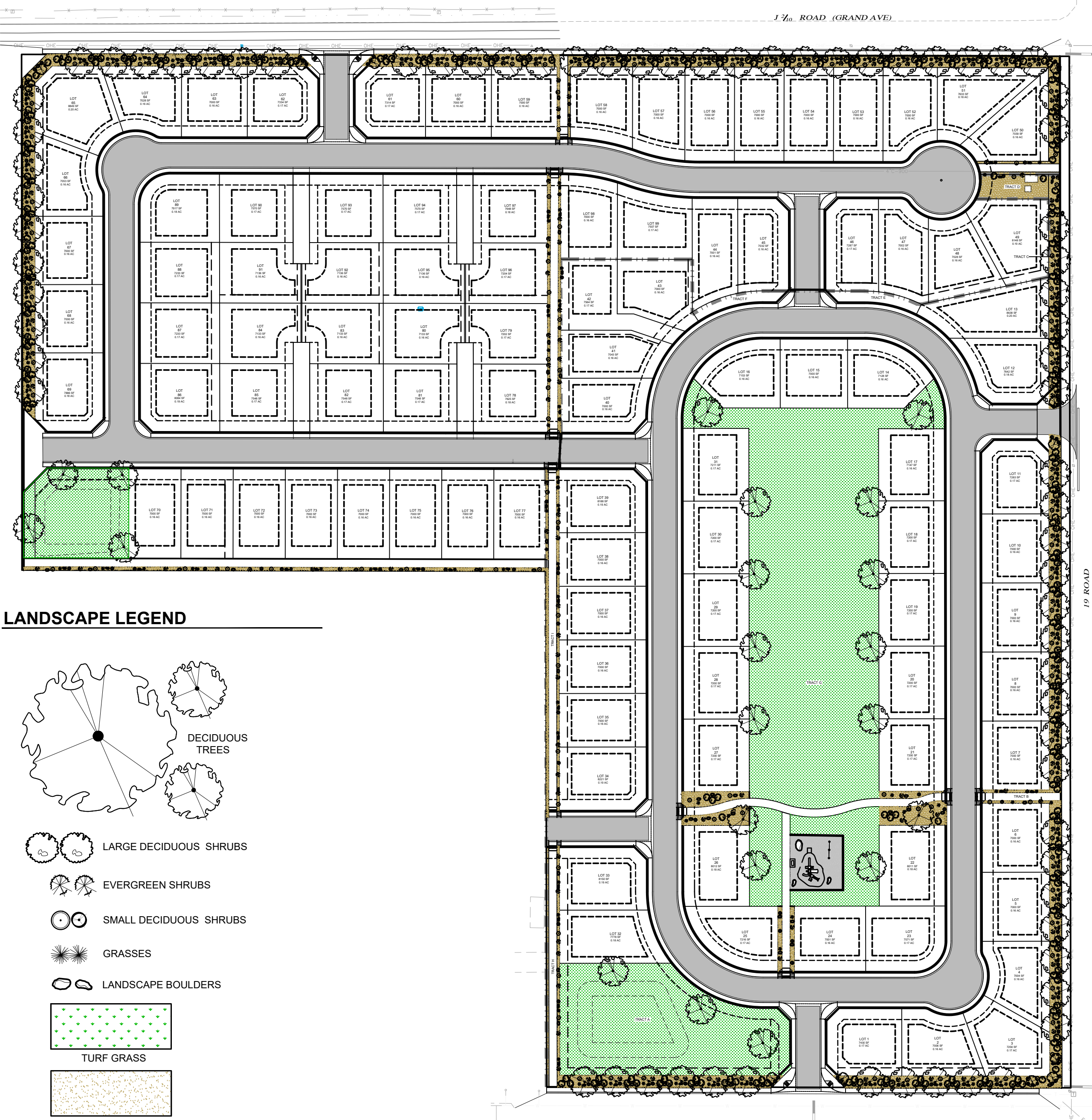
PLANT LIST

No.	Sym.	Common Name/ Biological Name	Planting Size/ Remarks	Mature Size
Deciduous Trees:				
26	ABM	Bigtooth Maple/ Acer grandidentatum	2" cal./ B&B	25' Ht. & 25' Spd.
10	CAL	Western Catalpa/ Catalpa speciosa	2" cal./ B&B	50' Ht. & 30' Spd.
16	KCT	Kentucky Coffee tree/ Gymnocladia dioica	2" cal./ B&B	60' Ht. & 50' Spd.
20	HAC	Common hackberry/ Celtis occidentalis	2" cal./ B&B	60' Ht. & 35' Spd.
14	PYU	Ussurian pear/ Pyrus ussuriensis	2" cal./ B&B	25' Ht. & 20' Spd.
9	SHA	Shademaster Locust/ Gleditsia triacanthos inermis	2" cal./ B&B	50' Ht. & 35' Spd.
11	WHC	Washington Hawthorn/ Crataegus phaenopyrum	2" cal./ Clump B&B	20' Ht. & 15' Spd.
Deciduous Shrubs:				
61	APP	Apache plume/ Fallugia paradoxa	18"-24" Spread/ #5	5' Ht. & 5' Spd.
86	CPL	Common Purple Lilac/ Syringa vulgaris	3" Tall/ #15	15' Ht. & 8' Spd.
56	SCH	Sand cherry/ Prunus besseyi	18"-24" Spread/ #5	6' Ht. & 6' Spd.
82	RSE	Regent Serviceberry/ Amelanchier alnifolia	18"-24" Spread/ #5	5' Ht. & 5' Spd.
27	PFG	Goldenfinger Potentilla/ Potentilla fruticosa	18"-24" Spread/ #5	3' Ht. & 4' Spd.
85	PNM	New Mexican Privet/ Forestiera neomexicana	3" Tall/ #5	12' Ht. & 10' Spd.
27	RCB	Japanese Barberry/ Berberis thunbergii	18"-24" Spread/ #5	4' Ht. & 4' Spd.
63	RSA	Russian Sage/ Perovskia atriplicifolia	18"-24" Spread/ #5	4' Ht. & 4' Spd.
27	WPA	Winnipeg Parks/ Rosa x Winnipeg Parks	18"-24" Spread/ #5	3' Ht. & 4' Spd.
Small Evergreen Trees and Shrubs:				
63	MUG	Mugo Pine/ Pinus mugo	18"-24" Spread/ #5	6' Ht. & 5' Spd.
16	SPA	Spartan Juniper/ Juniperus chinensis 'Spartan'	3"-4" Tall/ #5	15' Ht. & 5' Spd.
50	YFC	Yucca/ Yucca filamentosa	18"-24" Spread/ #5	4' Ht. & 4' Spd.
Grasses/ Perennials/ Ground Cover:				
68	FGH	Fountain Grass/ Pennisetum alopecuroides 'Hameln'	#1	2-3' Ht. & 2' Spd.
55	LBG	Little Bluestem/ Schizachyrium scoparium	#1	3' Ht. & 4' Spd.

*ALL PLANT TOTALS ON THE PLANT LIST SHALL BE VERIFIED WITH PLANT NUMBERS ON THE LANDSCAPE PLANS.
*PLANT LIST CONSIST OF XERISCAPE OR DESERT LANDSCAPING WITH DROUGHT TOLERANT PLANT SPECIES.



2 Landscape Plan
SCALE: 1" = 20'-0"



LANDSCAPE LEGEND

- DECIDUOUS TREES
- LARGE DECIDUOUS SHRUBS
- EVERGREEN SHRUBS
- SMALL DECIDUOUS SHRUBS
- GRASSES
- LANDSCAPE BOULDERS
- TURF GRASS
- LANDSCAPE ROCK TAN GRANITE

1 Overall Landscape Plan
SCALE: 1" = 20'-0"



2394 Patterson Road, Suite 201
Grand Junction, CO 81505
Phone: (970) 245-9051
Fax: (970) 245-7639

CONSTRUCTION MANAGERS & SITE PLANNERS
PROJECT MANAGERS
CIVIL & CONSULTING ENGINEERS

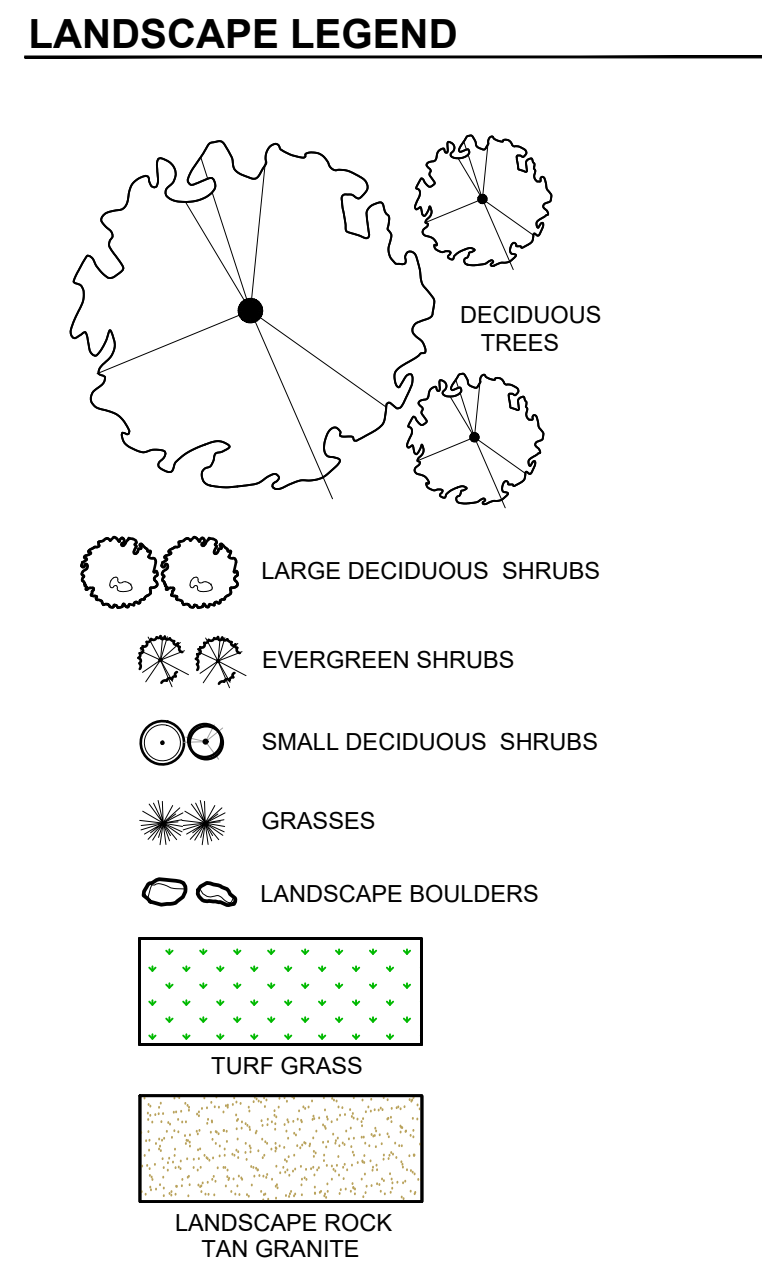
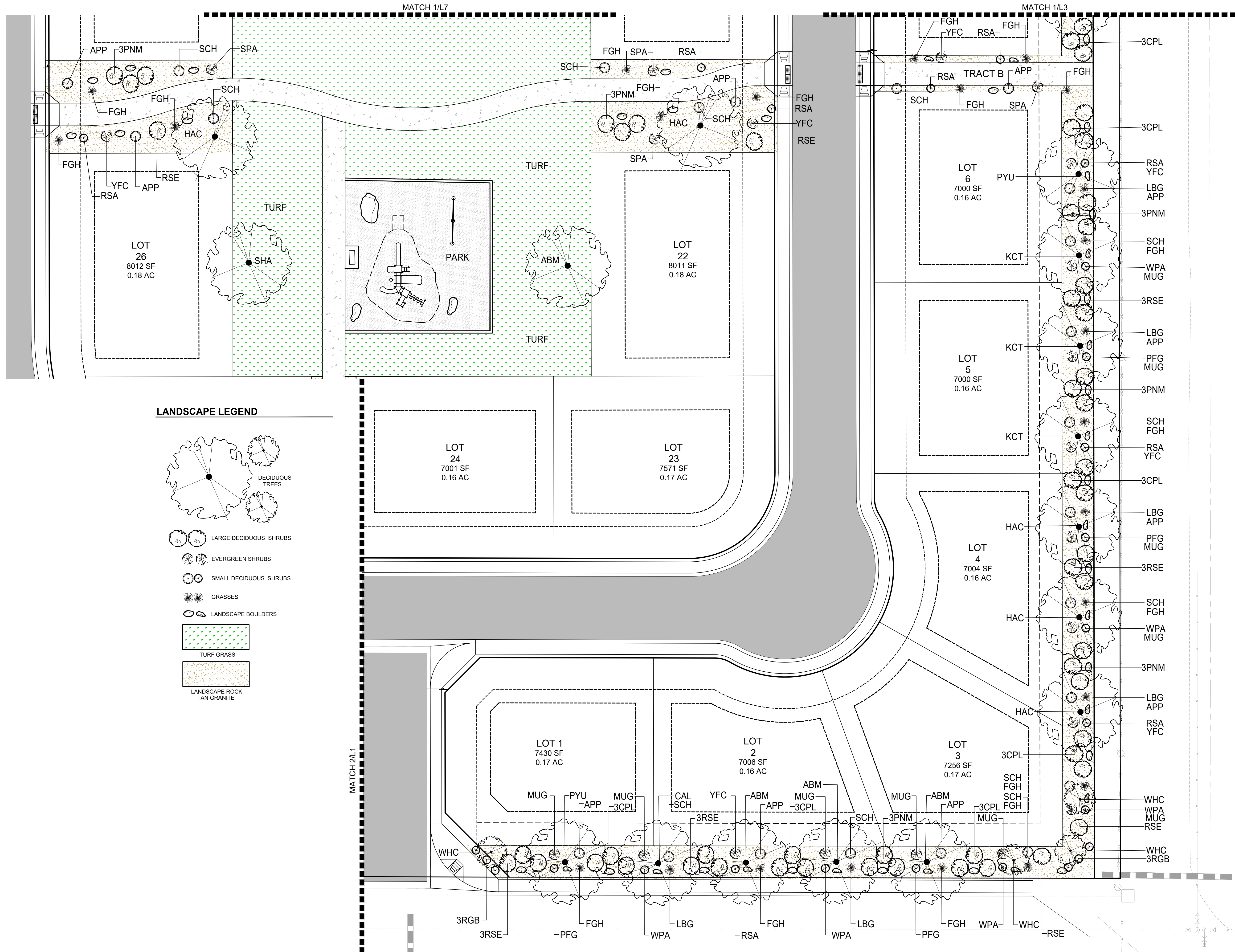
Copyright ©2022, by Vortex Engineering, Inc. ALL RIGHTS RESERVED. The site design/this drawing is copyrighted under the Federal Copyright Law of 1976. All rights are reserved by Vortex Engineering, Inc. No part of this drawing may be reproduced or transmitted in any form or by any means, electronic, mechanical, photocopying, recording, or by any information storage and retrieval system, without the written consent of Vortex Engineering, Inc. is prohibited.

FINAL PLAN

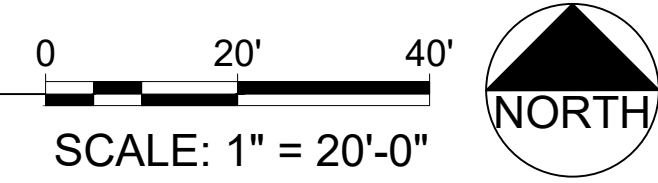
REV.	DATE	BY	COMMENT

LANDSCAPE PLAN
Weston Estates Subdivision
Final Plans
1877 J 1/16 Road
Fruita, Colorado, 81521

PROJECT NO: F20-052
DATE: 06/08/22
SCALE: 1"=20'-0"
CAD ID: L-1LANDSCAPE.DWG



1 Landscape Plan



2304 Patterson Road, Suite 201
Grand Junction, CO 81505
Phone: (970) 245-9051
Fax: (970) 245-7639

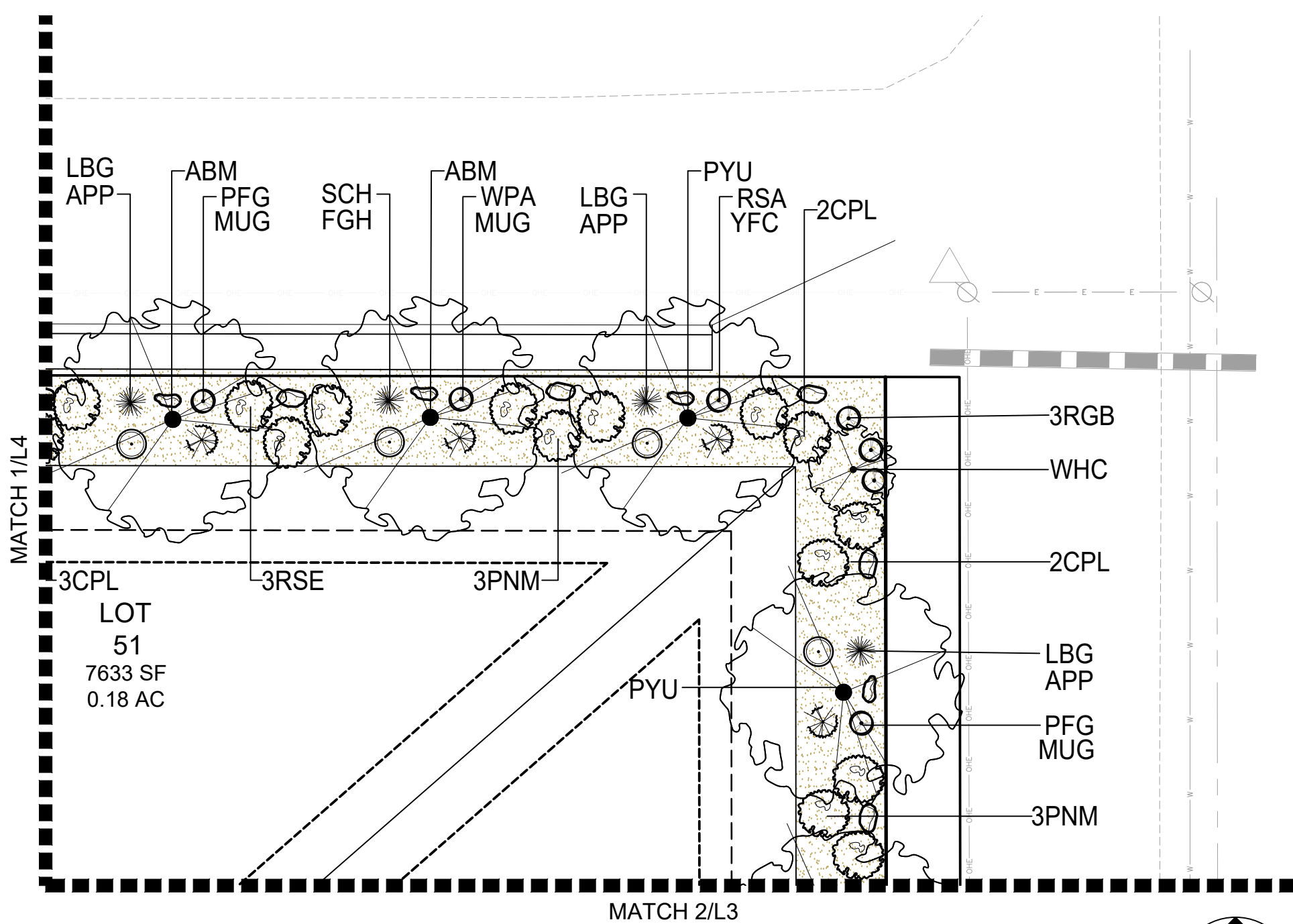
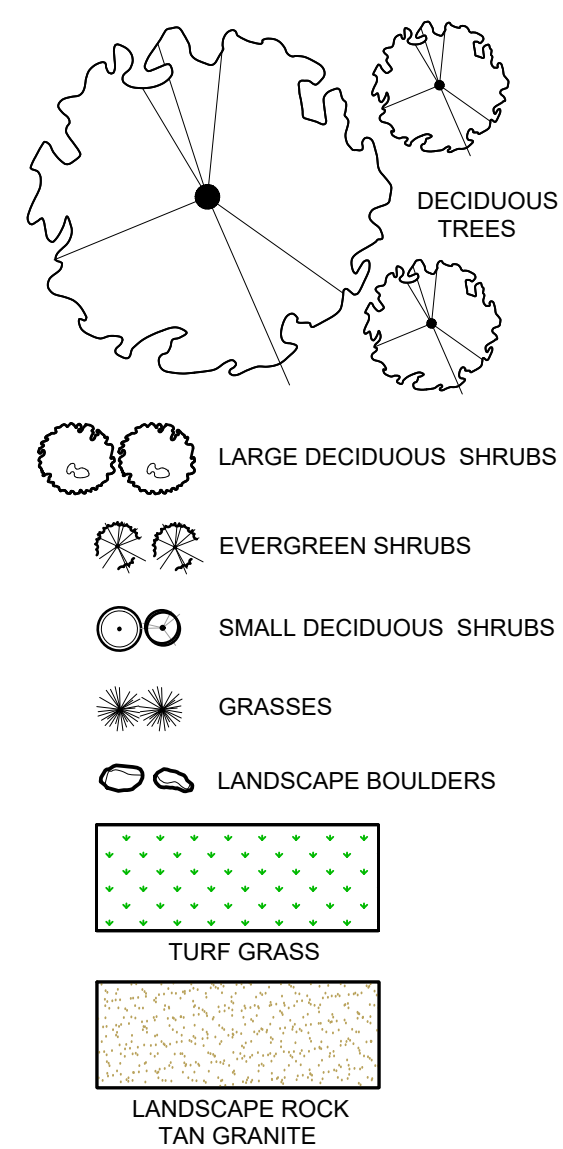
Copyright ©2022, by Vortex Engineering, Inc. ALL RIGHTS RESERVED. The site design / drawing is copyrighted under the Federal Copyright Law of 1976. All rights are reserved by Vortex Engineering, Inc. No part of this drawing may be reproduced or transmitted in any form or by any means, electronic, mechanical, photocopying, recording, or by any information storage and retrieval system, without the written consent of Vortex Engineering, Inc. is prohibited.

REV. DATE	BY	CHK.	APP.	COMMENT

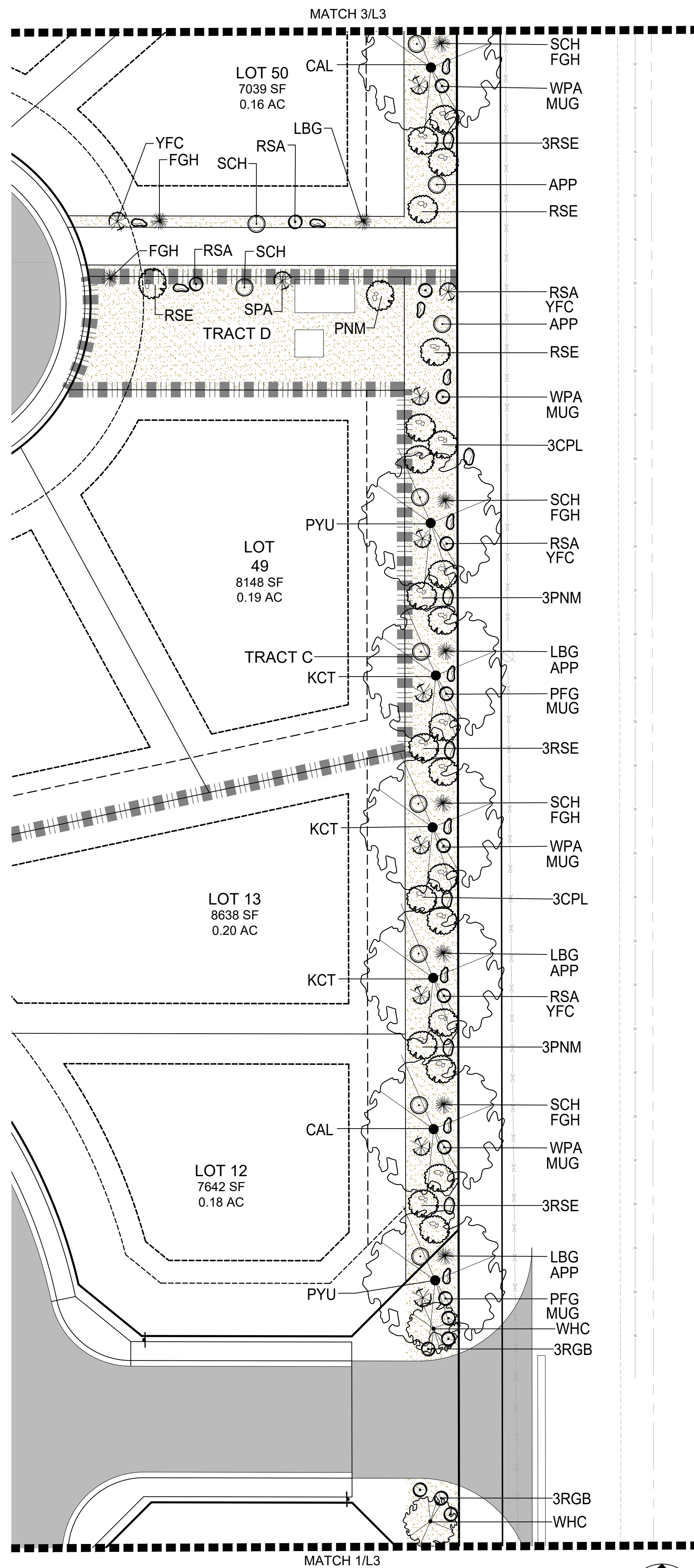
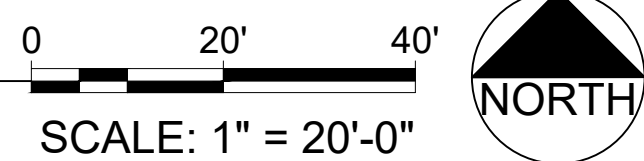
LANDSCAPE PLAN
Weston Estates Subdivision
Final Plans
1877 J 1/2 Road
Fruita, Colorado, 81521

PROJECT NO: F20-052
DATE: 06/08/22
SCALE: 1"=20'-0"
CAD ID: L-1LANDSCAPE.DWG

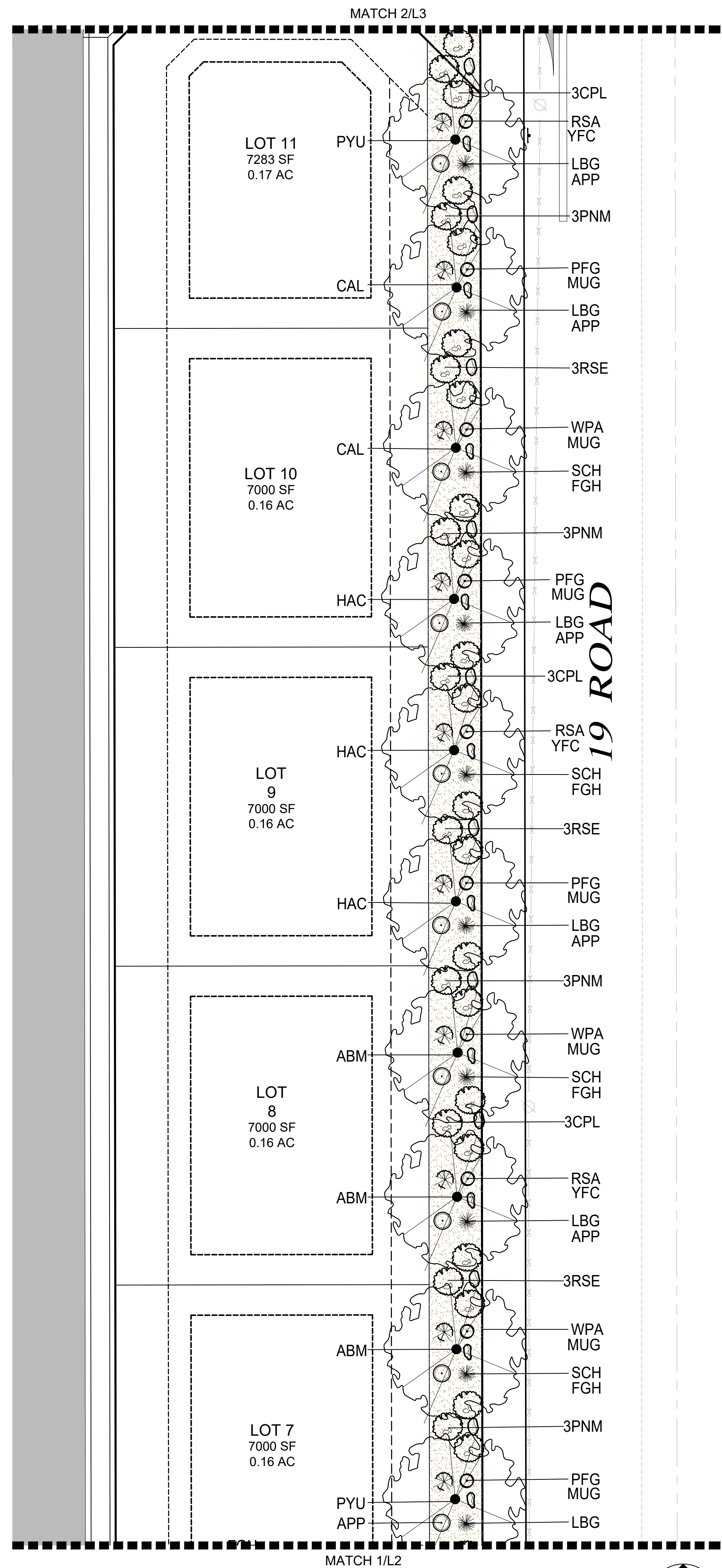
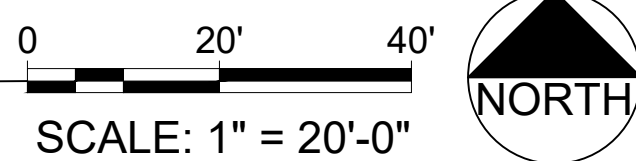
LANDSCAPE LEGEND



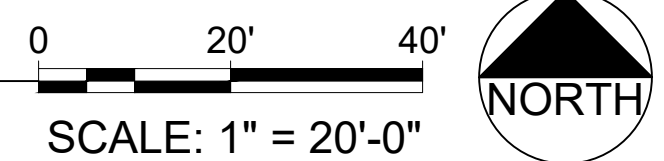
3 Landscape Plan



2 Landscape Plan



1 Landscape Plan



2304 Patterson Road, Suite 201
Grand Junction, CO 81505
Phone: (970) 245-9051
Fax: (970) 245-7639

Copyright ©2022, by Vortex Engineering, Inc. ALL RIGHTS RESERVED. The site design/plan shown on this drawing is copyrighted under the Federal Copyright Law of 1976. All rights are reserved by Vortex Engineering, Inc. No part of this drawing may be reproduced or transmitted in any form or by any means, electronic, mechanical, photocopying, recording, or by any information storage and retrieval system, without the written consent of Vortex Engineering, Inc. is prohibited.

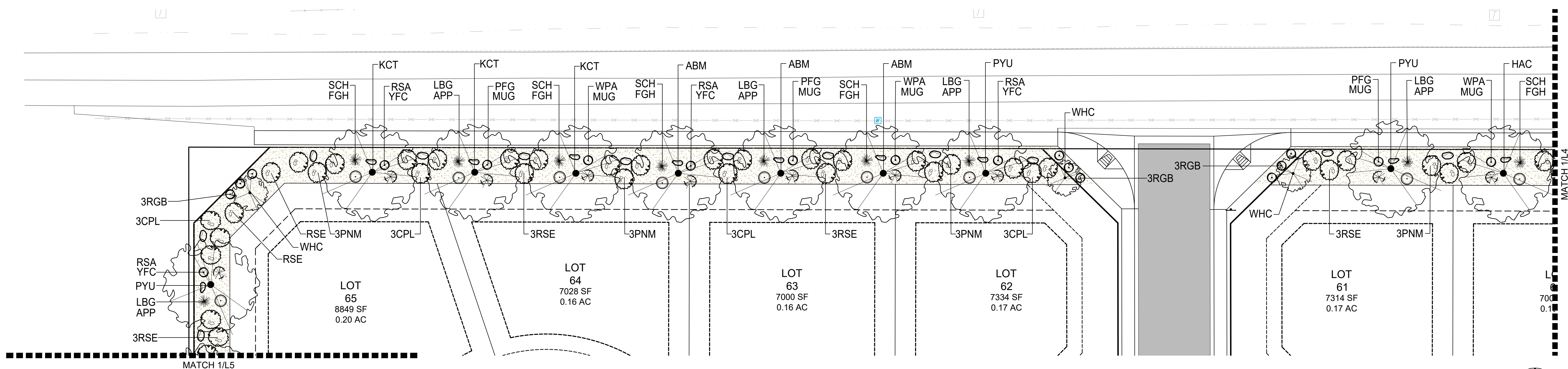
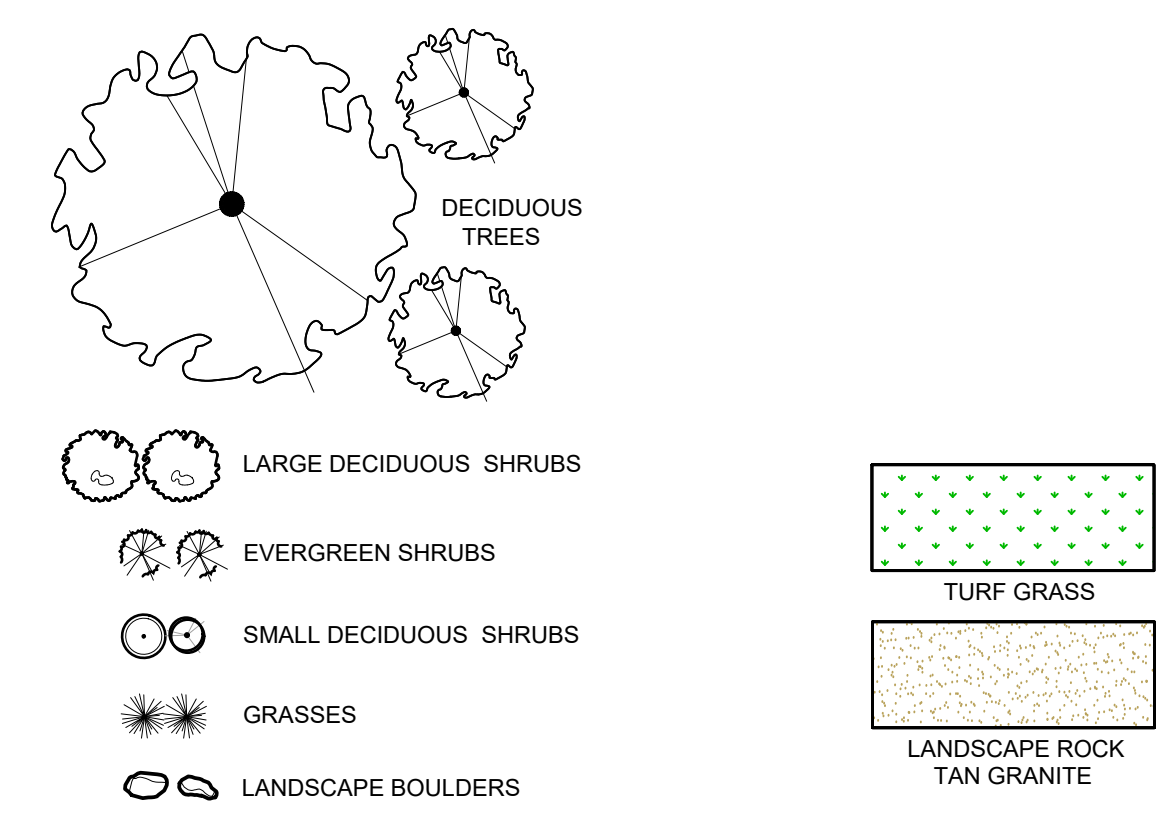
REV.	DATE	BY	COMMENT

LANDSCAPE PLAN
Weston Estates Subdivision
Final Plans
1877 J 1/16 Road
Fruita, Colorado, 81521

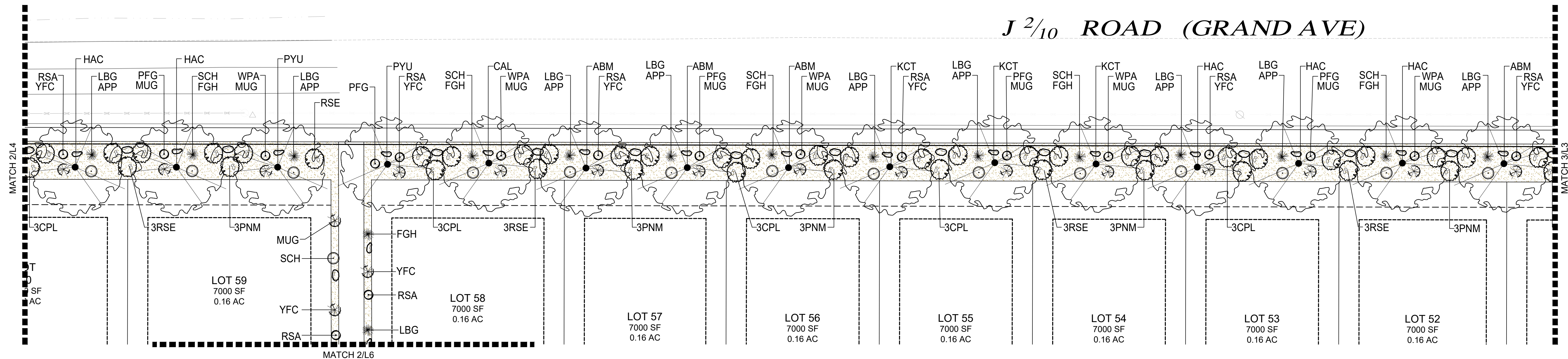
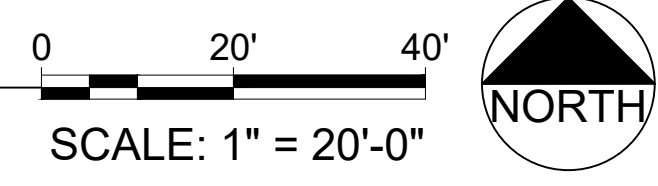
PROJECT NO: F20-052
DATE: 06/08/22
SCALE: 1"=20'-0"
CAD ID: L-1LANDSCAPE.DWG

~SHEET~
L3

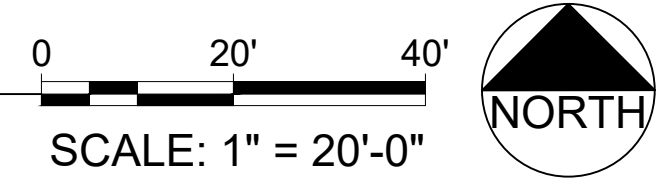
LANDSCAPE LEGEND



2 Landscape Plan



1 Landscape Plan



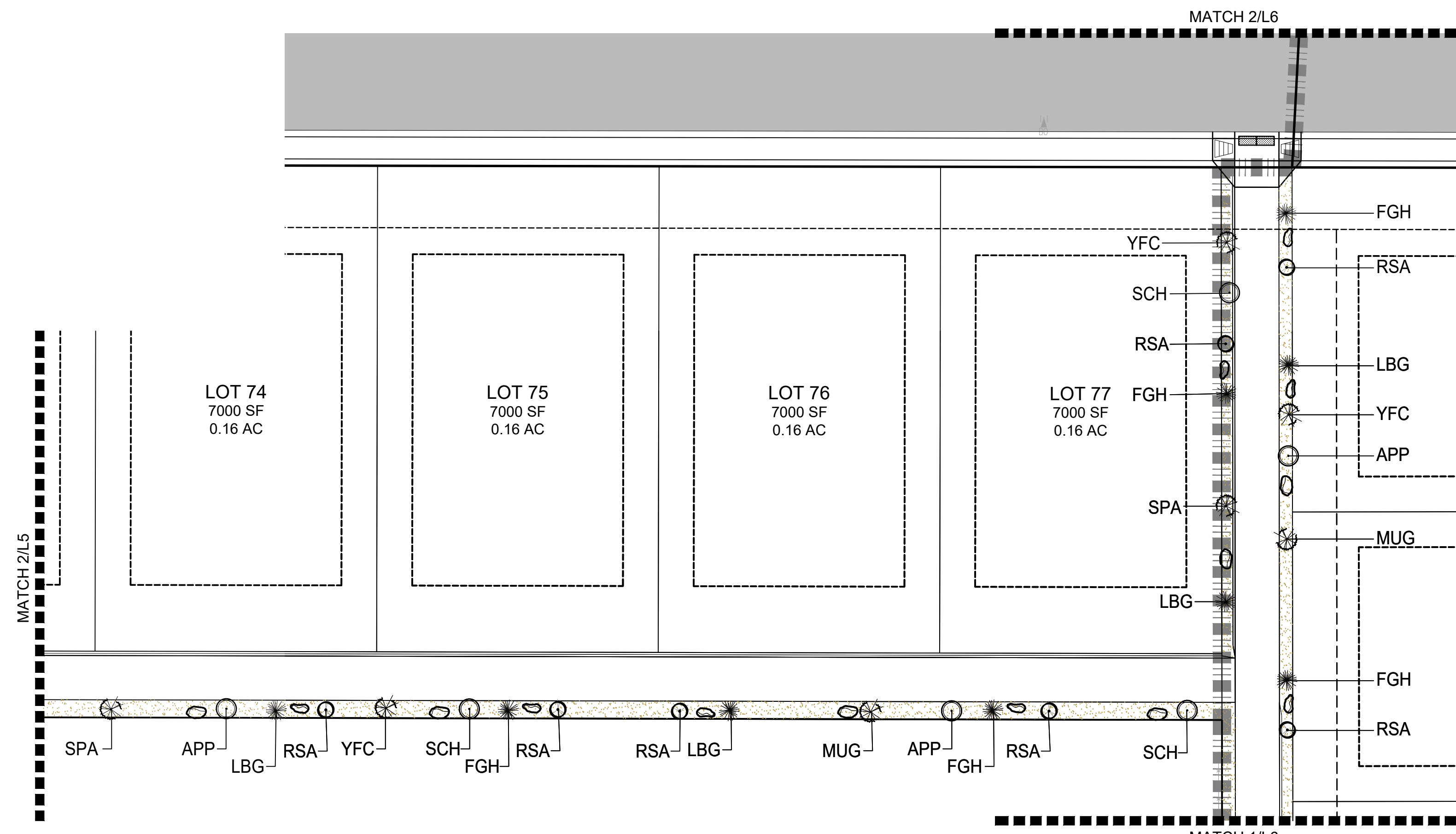
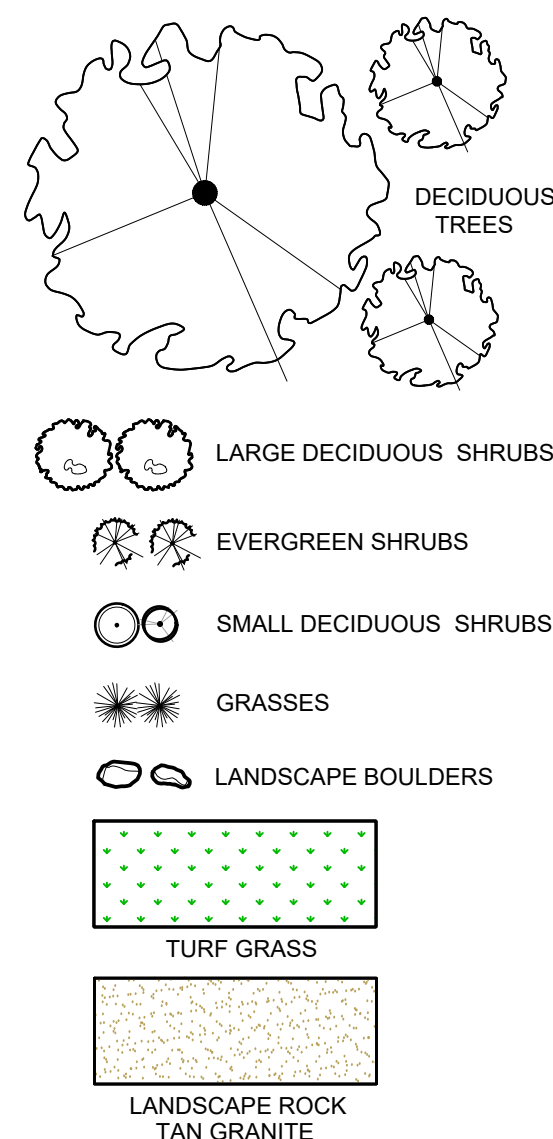
Copyright ©2022 by Vortex Engineering, Inc. ALL RIGHTS RESERVED. The site design / drawing is copyrighted under the Federal Copyright Law of 1976. All rights are reserved by Vortex Engineering, Inc. No part of this drawing may be reproduced or transmitted in any form or by any means, electronic or mechanical, including photocopying, recording, or by any information storage and retrieval system, without the written consent of Vortex Engineering, Inc. is prohibited.

REV	DATE	BY	COMMENT

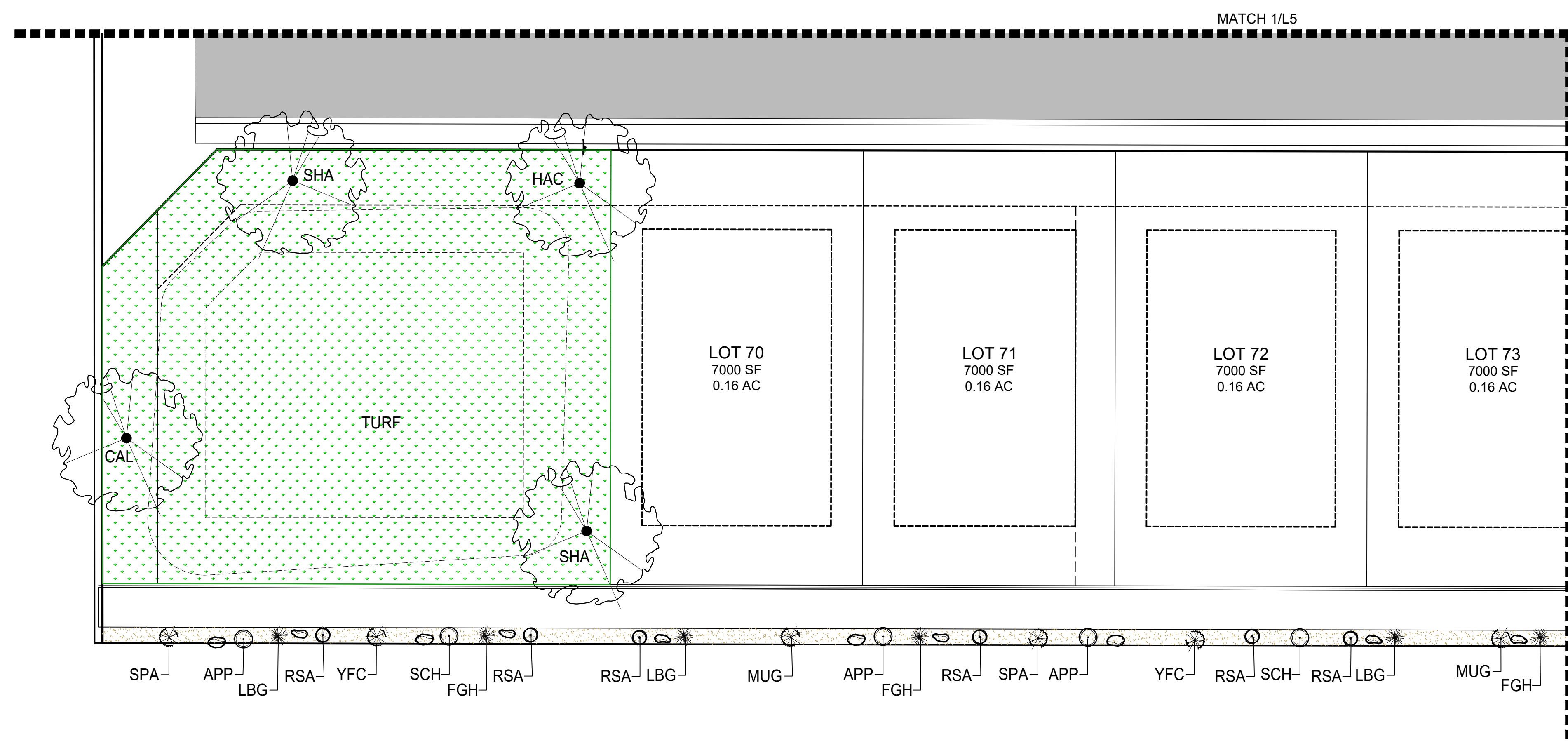
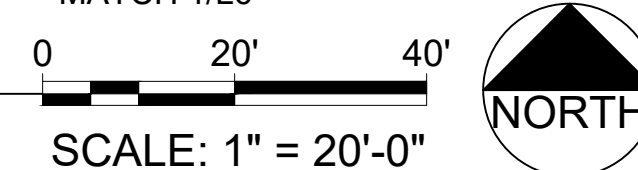
LANDSCAPE PLAN
Weston Estates Subdivision
Final Plans
1877 J ²/₁₀ Road
Fruita, Colorado, 81521

PROJECT NO: F20-052
DATE: 06/08/22
SCALE: 1"=20'-0"
CAD ID: L-1LANDSCAPE.DWG

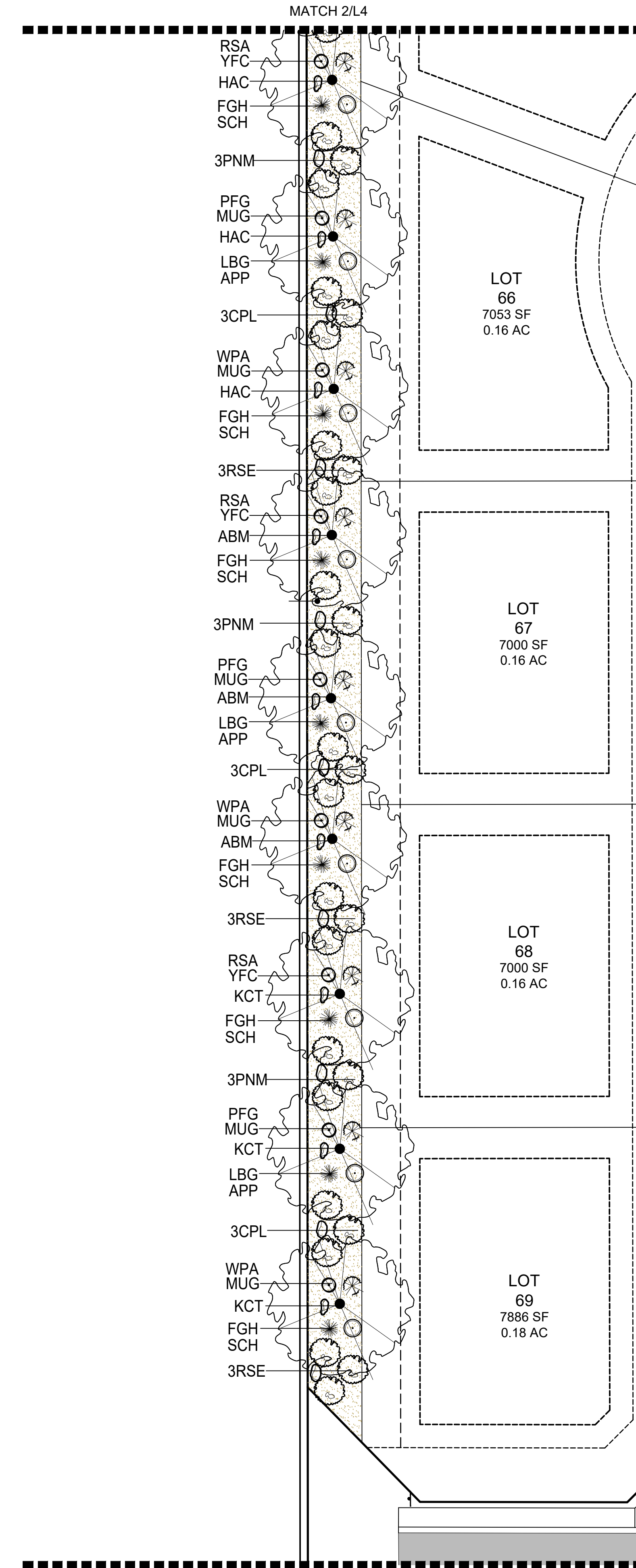
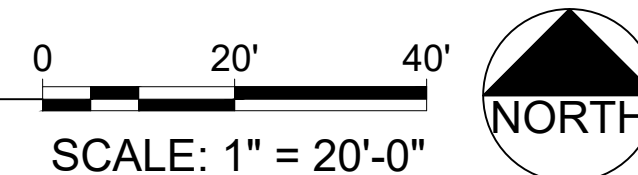
LANDSCAPE LEGEND



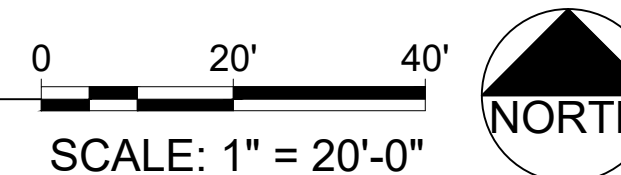
3 Landscape Plan



2 Landscape Plan



1 Landscape Plan



2304 Patterson Road, Suite 201
Grand Junction, CO 81505
Phone: (970) 245-9051
Fax: (970) 245-7639

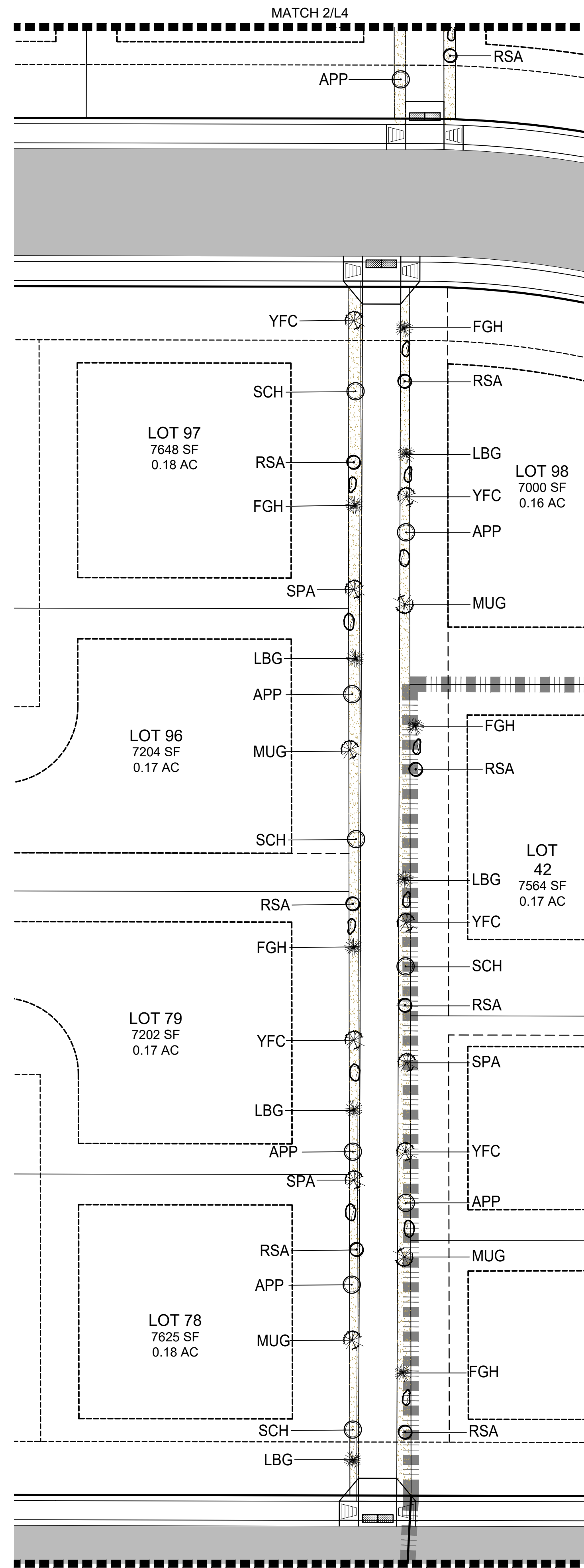
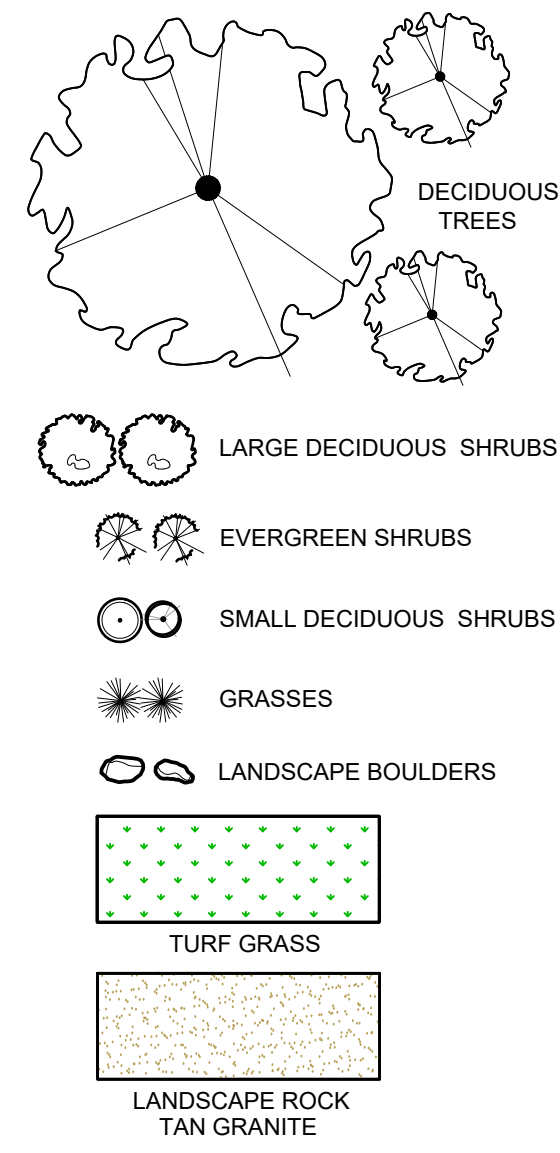
Copyright ©2022, by Vortex Engineering, Inc. ALL RIGHTS RESERVED. The site design/drawing is copyrighted under the Federal Copyright Law of 1976. All rights are reserved by Vortex Engineering, Inc. No part of this drawing may be reproduced or transmitted in any form or by any means, electronic, mechanical, photocopying, recording, or by any information storage and retrieval system, without the written consent of Vortex Engineering, Inc. is prohibited.

REV.	DATE	BY	COMMENT

LANDSCAPE PLAN
Weston Estates Subdivision
Final Plans
1877 J 1/2 Road
Fruita, Colorado, 81521

PROJECT NO: F20-052
DATE: 06/08/22
SCALE: 1"=20'-0"
CAD ID: L-1LANDSCAPE.DWG

LANDSCAPE LEGEND

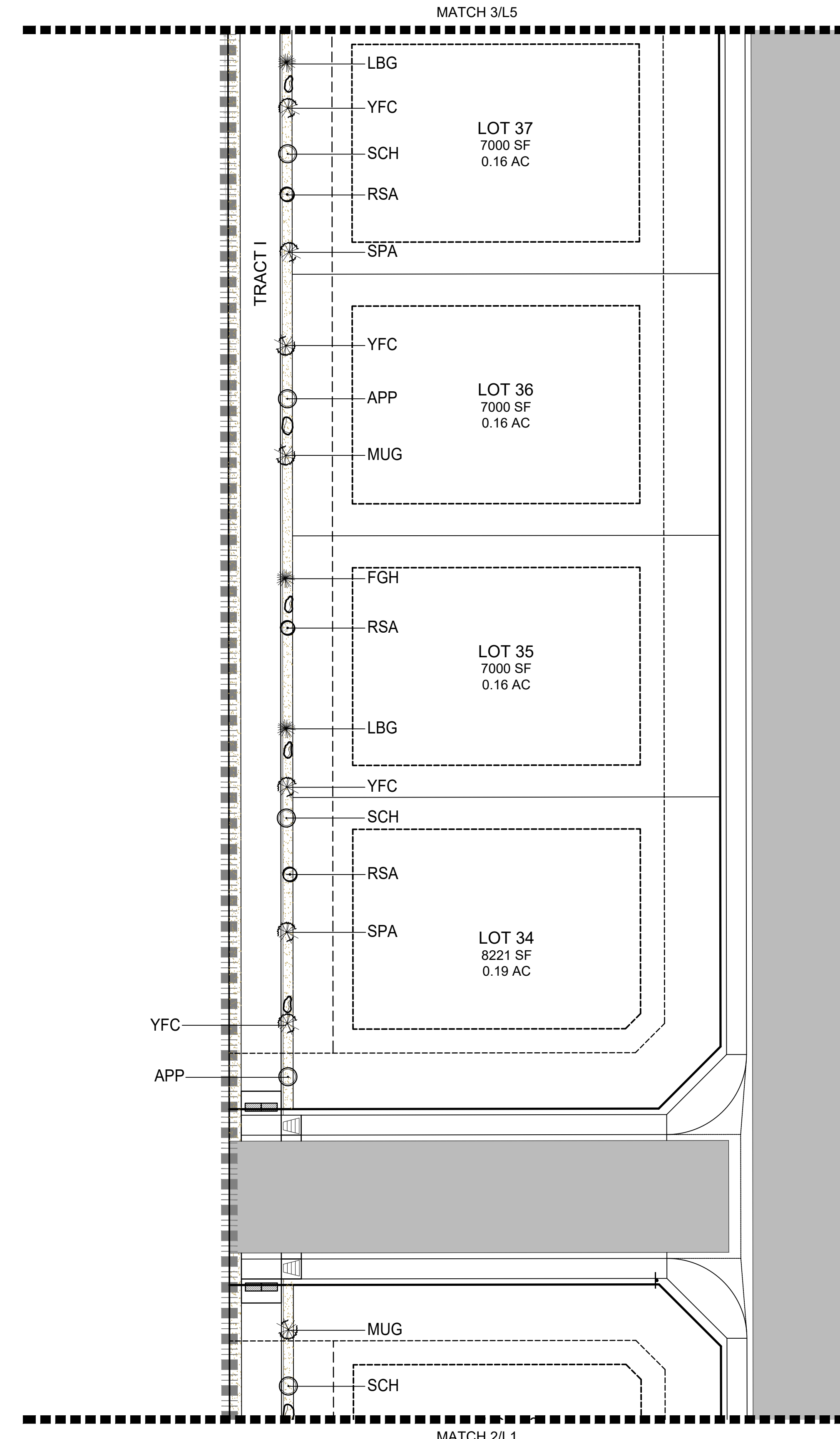


2 Landscape Plan

0 20' 40'

SCALE: 1" = 20'-0"

NORTH



1 Landscape Plan

0 20' 40'

SCALE: 1" = 20'-0"

NORTH



2304 Patterson Road, Suite 201
Grand Junction, CO 81505
Phone: (970) 245-9051
Fax: (970) 245-7639

Copyright ©2022, by Vortex Engineering, Inc. ALL RIGHTS RESERVED. The site design / drawing is copyrighted under the Federal Copyright Law of 1976. All rights are reserved by Vortex Engineering, Inc. No part of this drawing may be reproduced, stored in a retrieval system, or transmitted in any form or by any means, electronic, mechanical, photocopying, recording, or by any information storage and retrieval system, without the written consent of Vortex Engineering, Inc. is prohibited.

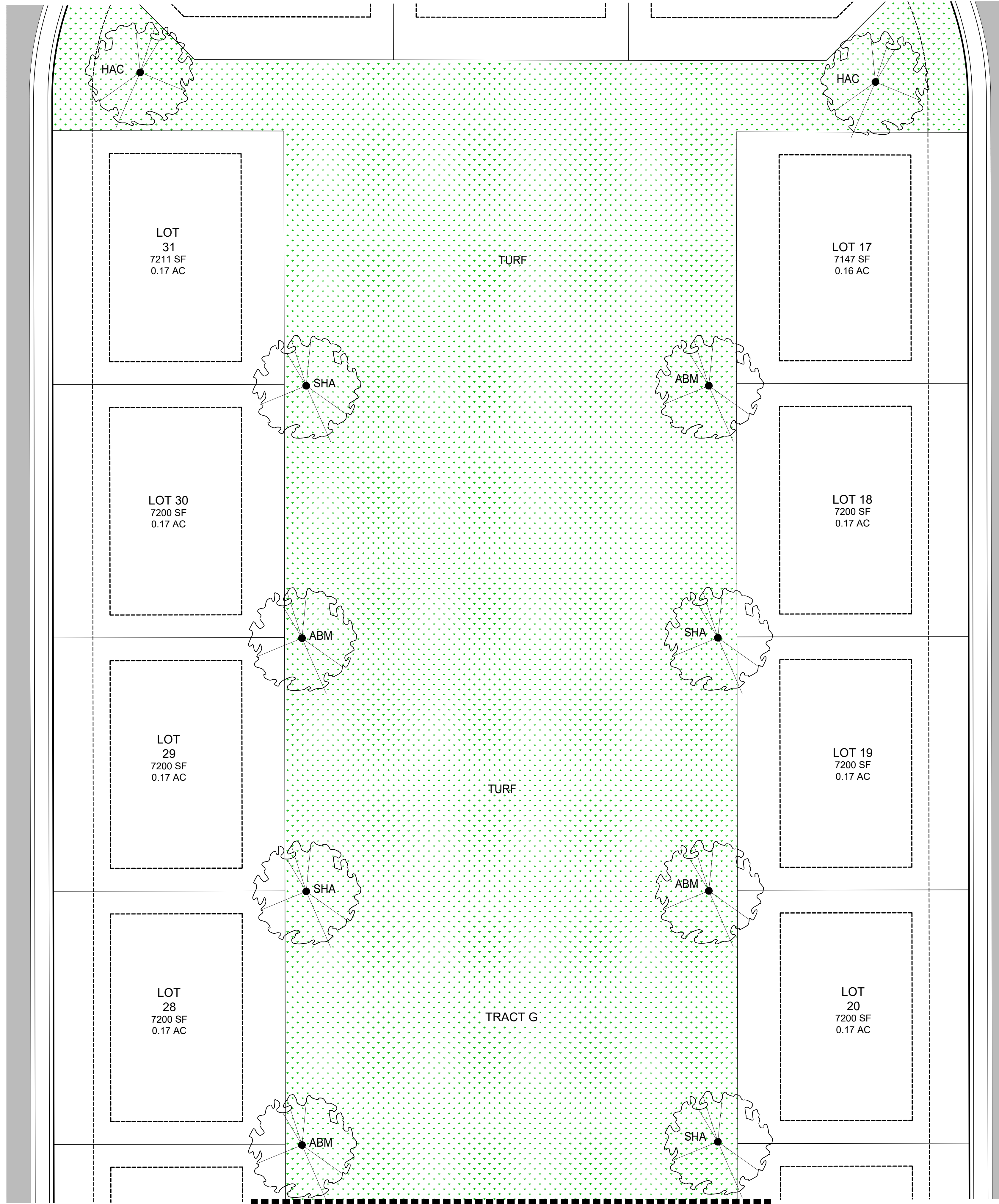
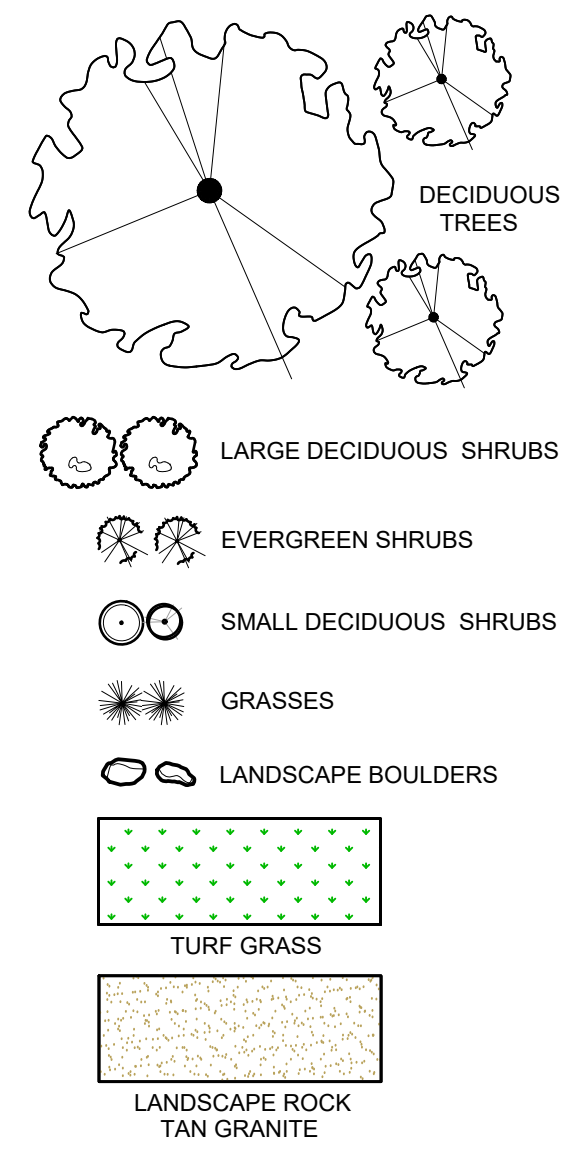
REV. DATE	BY	COMMENT

LANDSCAPE PLAN
Weston Estates Subdivision
Final Plans
1877 J 1/2 Road
Fruita, Colorado, 81521

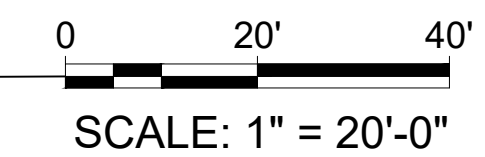
PROJECT NO: F20-052
DATE: 06/08/22
SCALE: 1"=20'-0"
CAD ID: L-1LANDSCAPE.DWG

-SHEET-
L6

LANDSCAPE LEGEND



1 Landscape Plan



2304 Patterson Road, Suite 201
Grand Junction, CO 81505
Phone: (970) 245-9051
Fax: (970) 245-7639

CONSTRUCTION MANAGERS & SITE PLANNERS
PROJECT MANAGERS
CIVIL & CONSULTING ENGINEERS

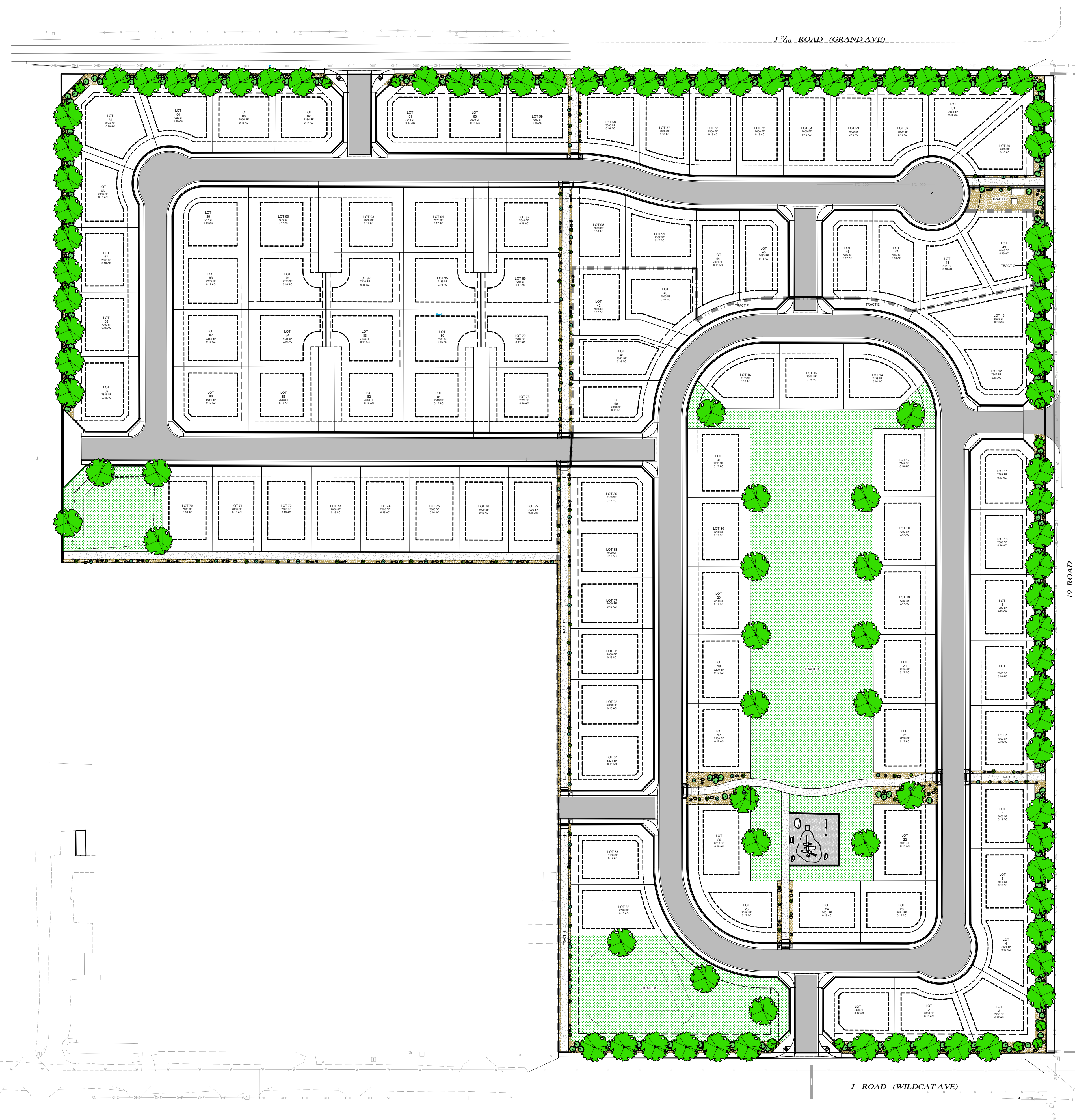
Copyright ©2022, by Vortex Engineering, Inc. ALL RIGHTS RESERVED. The site design / drawing is copyrighted under the Federal Copyright Law of 1976. All rights are reserved by Vortex Engineering, Inc. No part of this drawing may be reproduced, stored in a retrieval system, or transmitted in any form or by any means, electronic, mechanical, photocopying, recording, or by any information storage and retrieval system, without the written consent of Vortex Engineering, Inc. is prohibited.

REV. DATE	BY	COMMENT
	JSY	
	RL	
	DLS	
	BY	

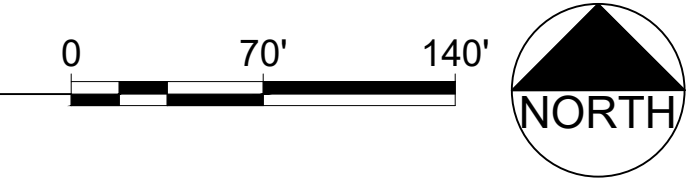
LANDSCAPE PLAN
Weston Estates Subdivision
Final Plans
1877 J ¹/₁₆ Road
Fruita, Colorado, 81521

PROJECT NO: F20-052
DATE: 06/08/22
SCALE: 1"=20'-0"
CAD ID: L-1LANDSCAPE.DWG

~SHEET~
L7



1 Overall Landscape Plan



Copyright ©2022, by Vortex Engineering, Inc. ALL RIGHTS RESERVED. The site design in this drawing is copyrighted under the Federal Copyright Law of 1976. All rights are reserved by Vortex Engineering, Inc. No part of this drawing may be reproduced, stored in a retrieval system, or transmitted in any form or by any means, electronic, mechanical, photocopying, recording, or by any information storage and retrieval system, without the written consent of Vortex Engineering, Inc. is prohibited.

REV.	DATE	BY	COMMENT

LANDSCAPE PLAN
Weston Estates Subdivision
Final Plans
1877 J ¹/₁₀ Road
Fruita, Colorado, 81521

PROJECT NO: F20-052
DATE: 06/08/22
SCALE: 1"=70'-0"
CAD ID: L-1LANDSCAPE.DWG