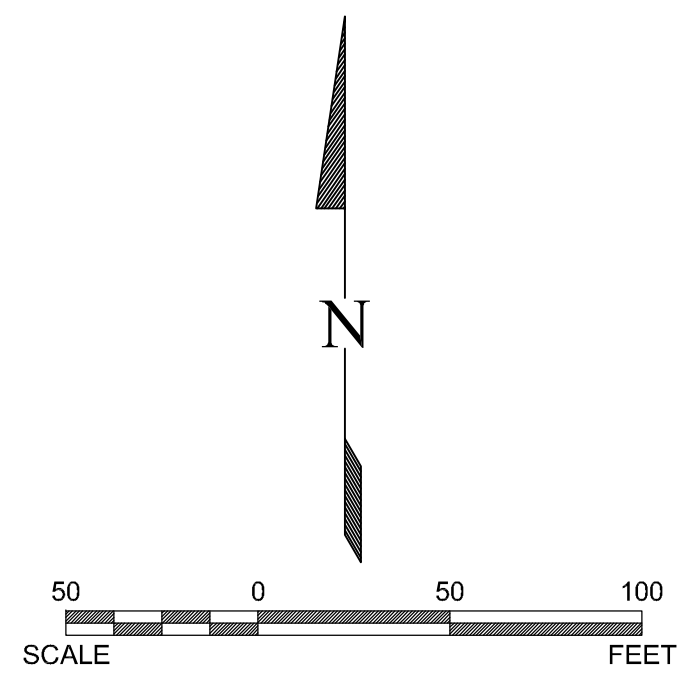


SHEET KEY MAP



WATERLINE NOTES:

1. WATER MAINS SHALL BE AWWA C-900, CLASS 150 PVC PIPE. INSTALLATION OF PIPE, FITTINGS, VALVES, AND SERVICES, INCLUDING TESTING AND DISINFECTION, SHALL BE IN ACCORDANCE WITH THE UTE WATER CONSERVANCY DISTRICT STANDARD SPECIFICATIONS AND DRAWINGS. UTE WATER WILL FURNISH THE WATER METER PITS AND YOLKS. CONTRACTOR SHALL INSTALL THEM. THE CONTRACTOR IS RESPONSIBLE FOR ALL REQUIRED WATER LINE TESTING. THE WATER LINE SHALL BE ACCEPTED BY UTE WATER PRIOR TO PAVING. ALL UTE WATER POLICIES AND FEES IN EFFECT AT THE TIME OF APPLICATION WILL APPLY.
2. THE CONTRACTOR SHALL NOTIFY THE UTE WATER CONSERVANCY DISTRICT 48 HOURS PRIOR TO BEGINNING CONSTRUCTION.
3. ALL TRENCHES SHALL BE COMPACTED TO 95% AS DETERMINED BY AASHTO T-99. CONTRACTOR SHALL BE REQUIRED TO PERFORM ALL NECESSARY COMPACTION TESTS THROUGH A CERTIFIED SOILS LAB.
4. MINIMUM COVER REQUIRED OVER THE TOP OF NEW WATERLINES IS 4'-6".

SANITARY SEWER NOTES:

1. ALL SANITARY SEWER PIPE SHALL BE ASTM D3034, SDR-35, UNLESS OTHERWISE NOTED.
2. ALL SEWER MAINS SHALL BE LAID USING A LASER.
3. ALL SERVICE LINE CONNECTIONS SHALL BE ACCOMPLISHED USING FULL-BODY WYES OR TEES. TAPPING SADDLES WILL NOT BE ALLOWED.
4. SERVICE LINES SHALL NOT BE CONNECTED DIRECTLY INTO MANHOLES.
5. THE CONTRACTOR SHALL NOTIFY CITY INSPECTION 48 HOURS PRIOR TO COMMENCEMENT OF CONSTRUCTION.
6. THE CONTRACTOR IS RESPONSIBLE FOR ALL REQUIRED SEWER LINE TESTING. IT SHALL BE PERFORMED WITH THE CITY INSPECTOR PRESENT. PRESSURE TESTING WILL BE PERFORMED AFTER SUBGRADE COMPACTION AND PRIOR TO PAVING. FINAL LAMPING AND AN ADDITIONAL AIR TEST WILL ALSO BE PERFORMED AFTER PAVING IS COMPLETED. THESE TESTS SHALL BE THE BASIS OF ACCEPTANCE OF THE SEWER LINE EXTENSION.
7. A CLAY CUT-OFF WALL SHALL BE PLACED 10 FEET UPSTREAM FROM ALL NEW MANHOLES UNLESS OTHERWISE NOTED. THE CUT-OFF WALL SHALL EXTEND FROM 6" BELOW TO 6" ABOVE GRANULAR BACKFILL MATERIAL AND SHALL BE 2' WIDE. IF NATIVE MATERIAL IS NOT SUITABLE, THE CONTRACTOR SHALL IMPORT MATERIAL APPROVED BY THE ENGINEER.


GENERAL CONSTRUCTION NOTES:

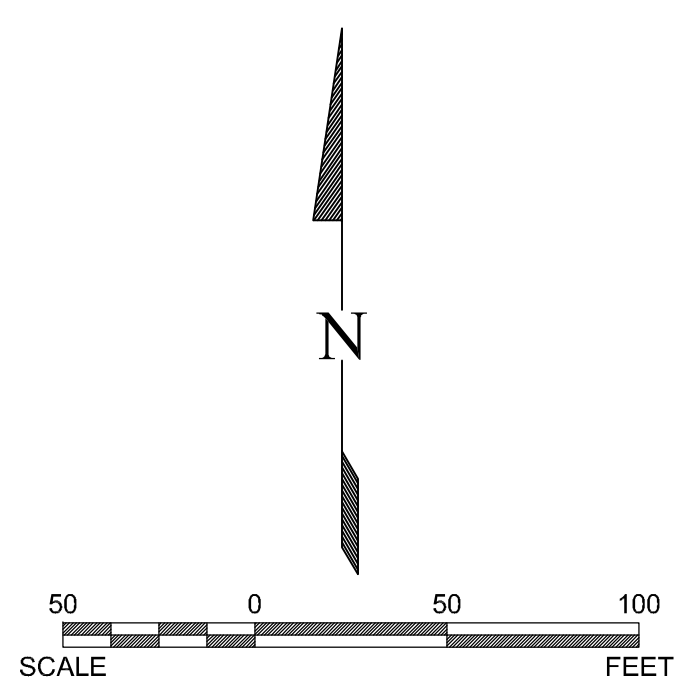
1. ALL HOMES EXCEPT LOTS A-1 AND A-2 ARE REQUIRED TO HAVE A RESIDENTIAL FIRE SUPPRESSION SPRINKLER SYSTEM INSTALLED. THE SYSTEM MUST MEET THE REQUIREMENTS OF NFPA 130 PER THE FIRE CODE OR SECTION P2409 OF THE RESIDENTIAL CODE.



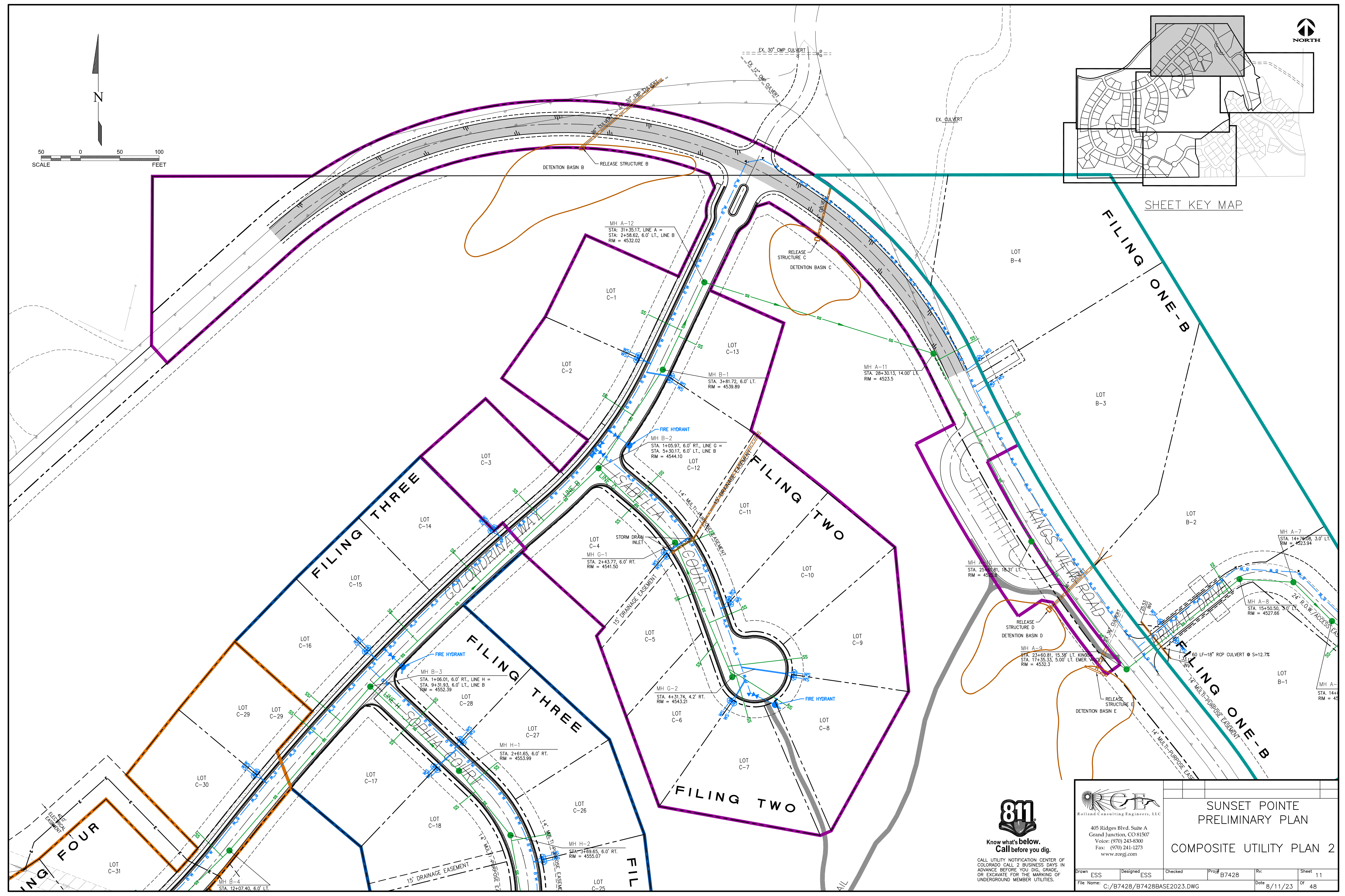
CALL UTILITY NOTIFICATION CENTER OF COLORADO CALL 2 BUSINESS DAYS IN ADVANCE BEFORE YOU DIG, GRADE, OR EXCAVATE FOR THE MARKING OF UNDERGROUND MEMBER UTILITIES.

KINGS VIEW SUBDIVISION
FILING 1

 Roland Consulting Engineers, LLC 405 Ridges Blvd, Suite A Grand Junction, CO 81507 Voice: (970) 243-8300 Fax: (970) 241-1273 www.rcegi.com		SUNSET POINTE PRELIMINARY PLAN COMPOSITE UTILITY PLAN 1	
Drawn	ESS	Designed	ESS
Checked		Proj#	B7428
Rvc		Date	8/11/23
Sheet	10	Of	48
File Name: C:/B7428/B7428BASE2023.DWG			



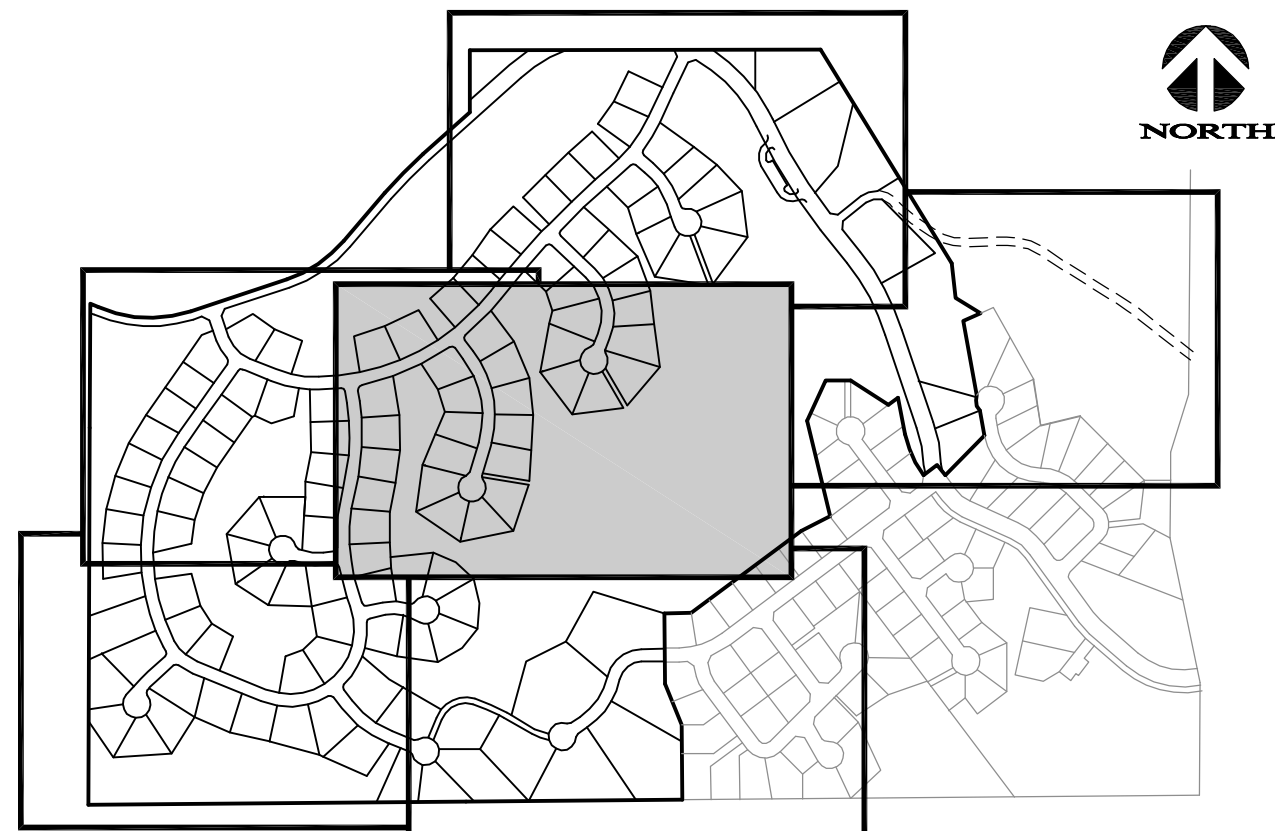
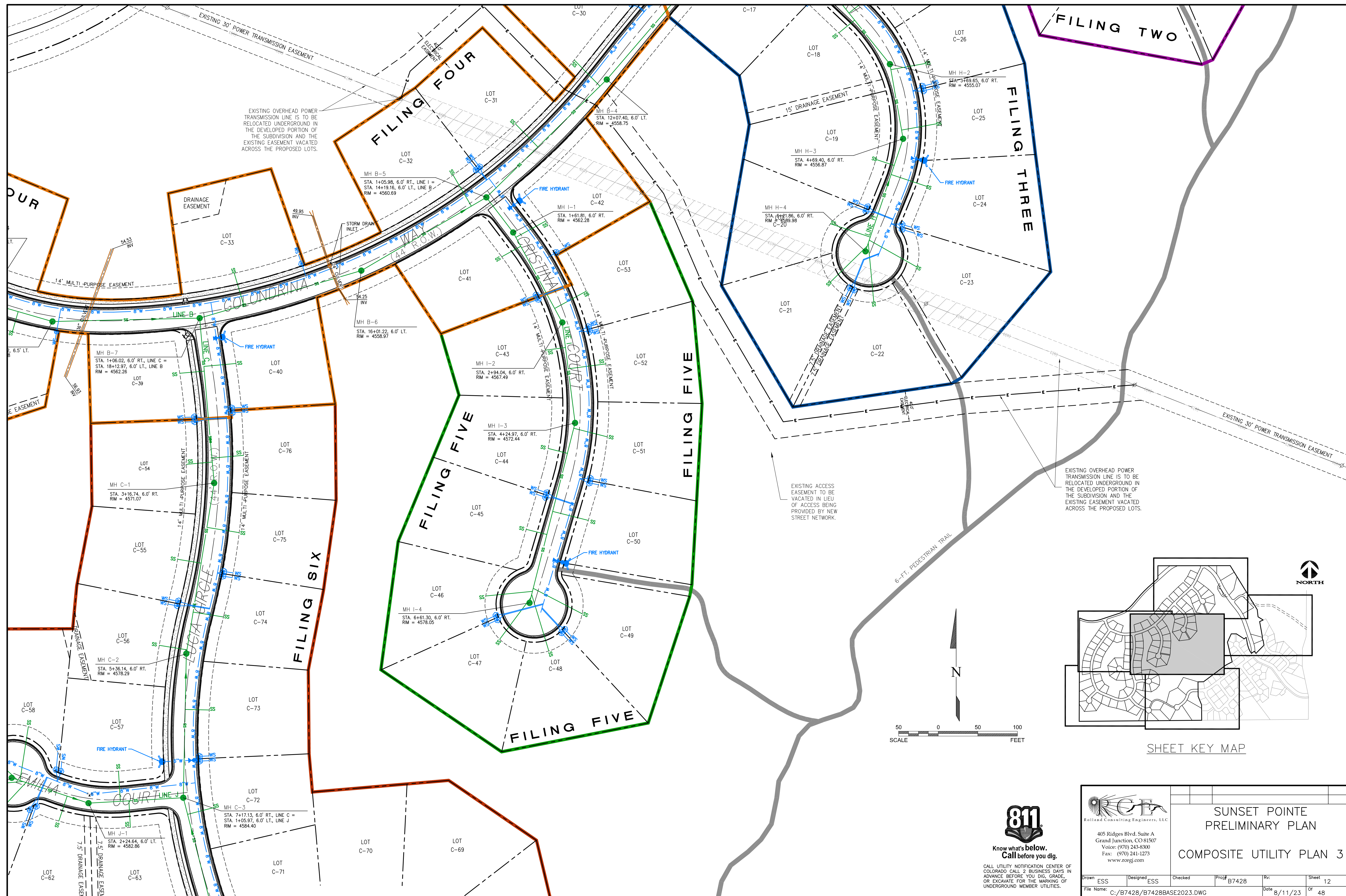
SHEET KEY MAP



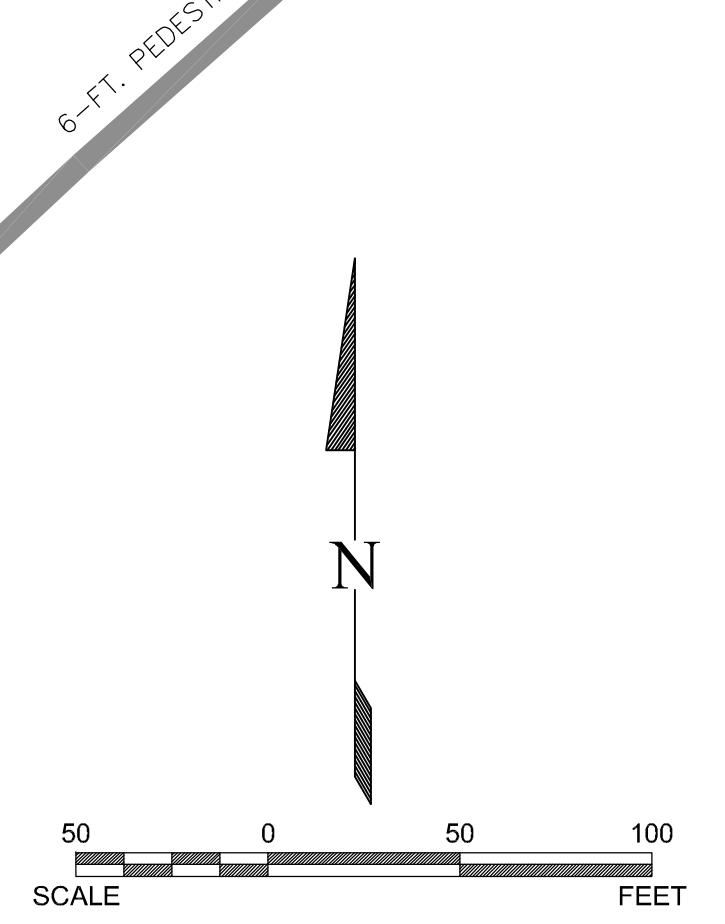
CALL UTILITY NOTIFICATION CENTER OF COLORADO CALL 2 BUSINESS DAYS IN ADVANCE BEFORE YOU DIG, GRADE, OR EXCAVATE FOR THE MARKING OF UNDERGROUND MEMBER UTILITIES.

RCE
 Rolland Consulting Engineers, LLC
 405 Ridges Blvd, Suite A
 Grand Junction, CO 81507
 Voice: (970) 243-8300
 Fax: (970) 241-1273
 www.rcegi.com

SUNSET POINTE PRELIMINARY PLAN					
COMPOSITE UTILITY PLAN 2					
Drawn	ESS	Designed	ESS	Checked	Proj# B7428
File Name:	C:\B7428\B7428BASE2023.DWG			Date	8/11/23
				Sheet	11 of 48



SHEET KEY MAP

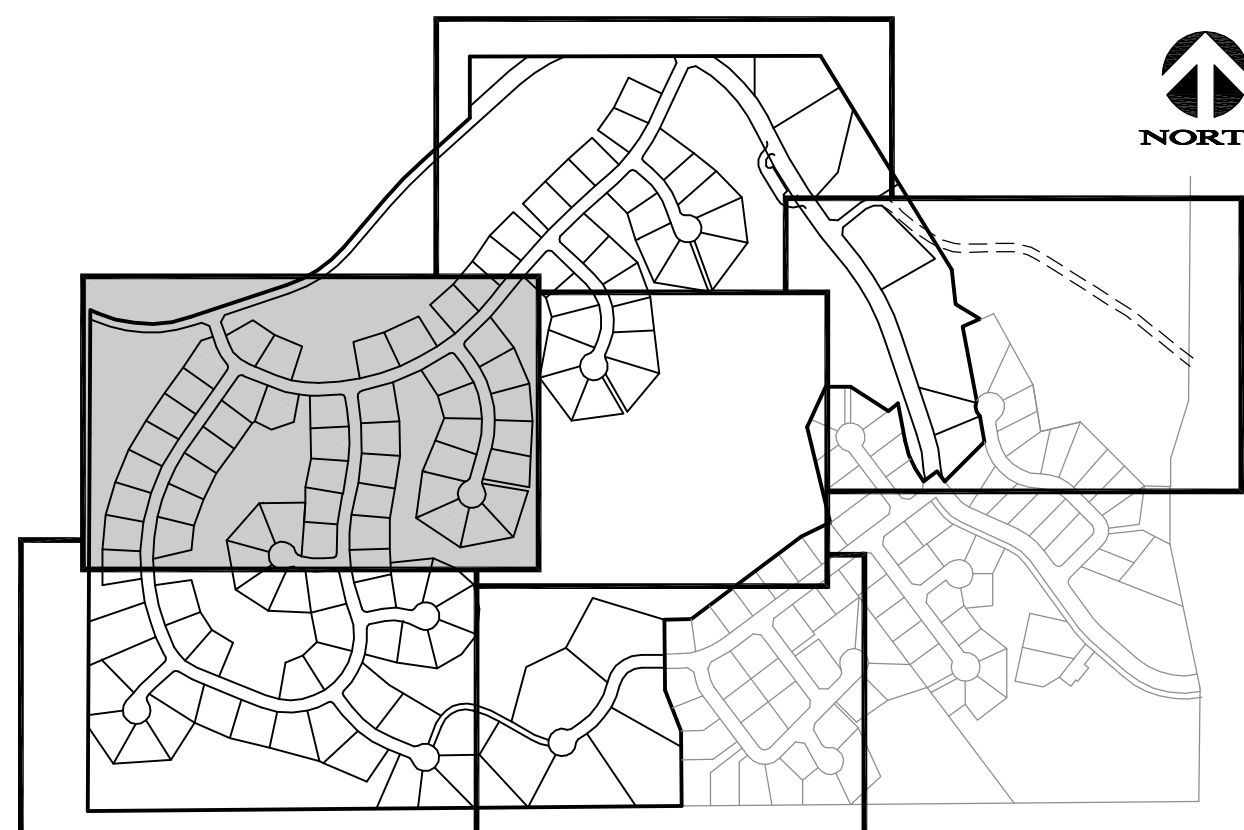


CALL UTILITY NOTIFICATION CENTER OF COLORADO CALL 2 BUSINESS DAYS IN ADVANCE BEFORE YOU DIG, GRADE, OR EXCAVATE FOR THE MARKING OF UNDERGROUND MEMBER UTILITIES.

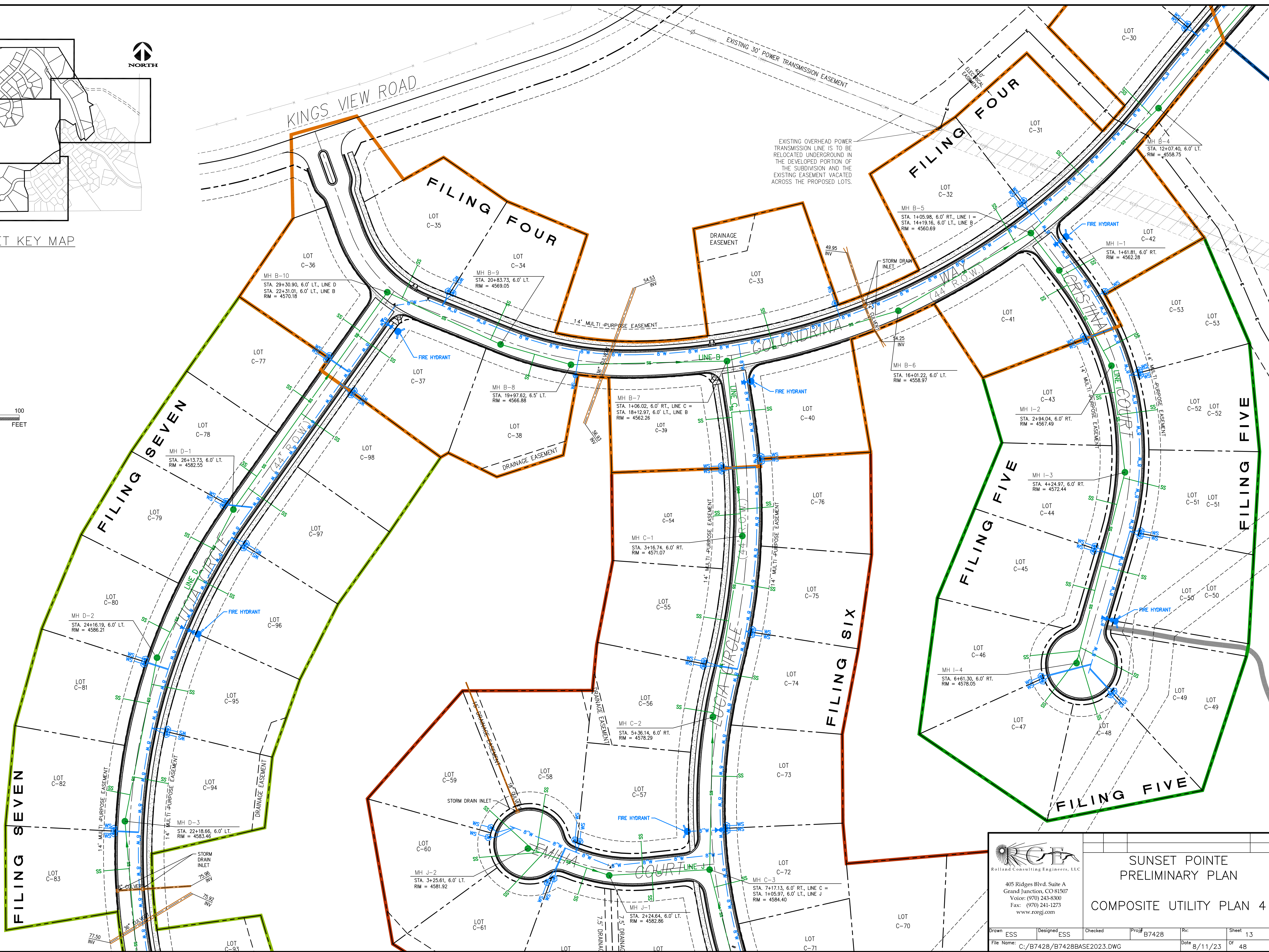
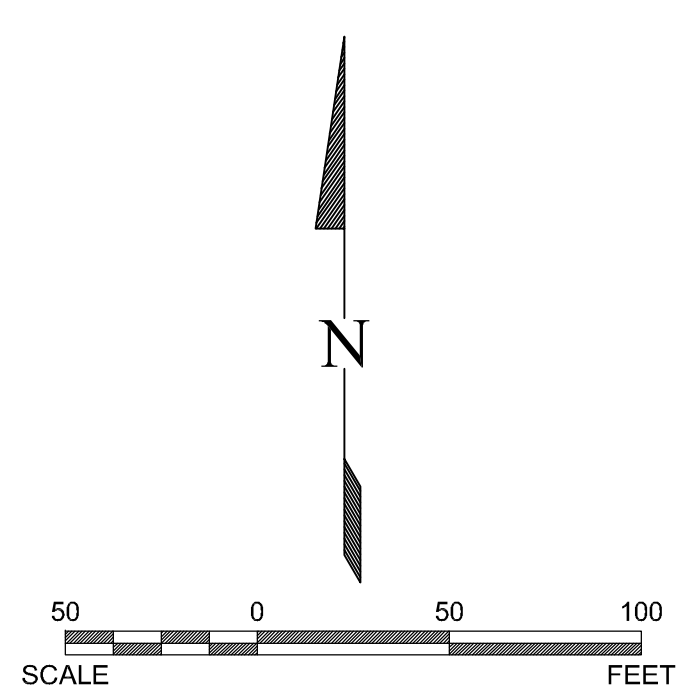
RCEGI
 Rolland Consulting Engineers, LLC
 405 Ridges Blvd. Suite A
 Grand Junction, CO 81507
 Voice: (970) 243-8300
 Fax: (970) 241-1273
 www.rcegi.com

**SUNSET POINTE
 PRELIMINARY PLAN**
COMPOSITE UTILITY PLAN 3

Drawn	ESS	Designed	ESS	Checked		Proj#	B7428	Rvc		Sheet	12
File Name:	C:/B7428/B7428BASE2023.DWG					Date	8/11/23	Of	48		



SHEET KEY MAP

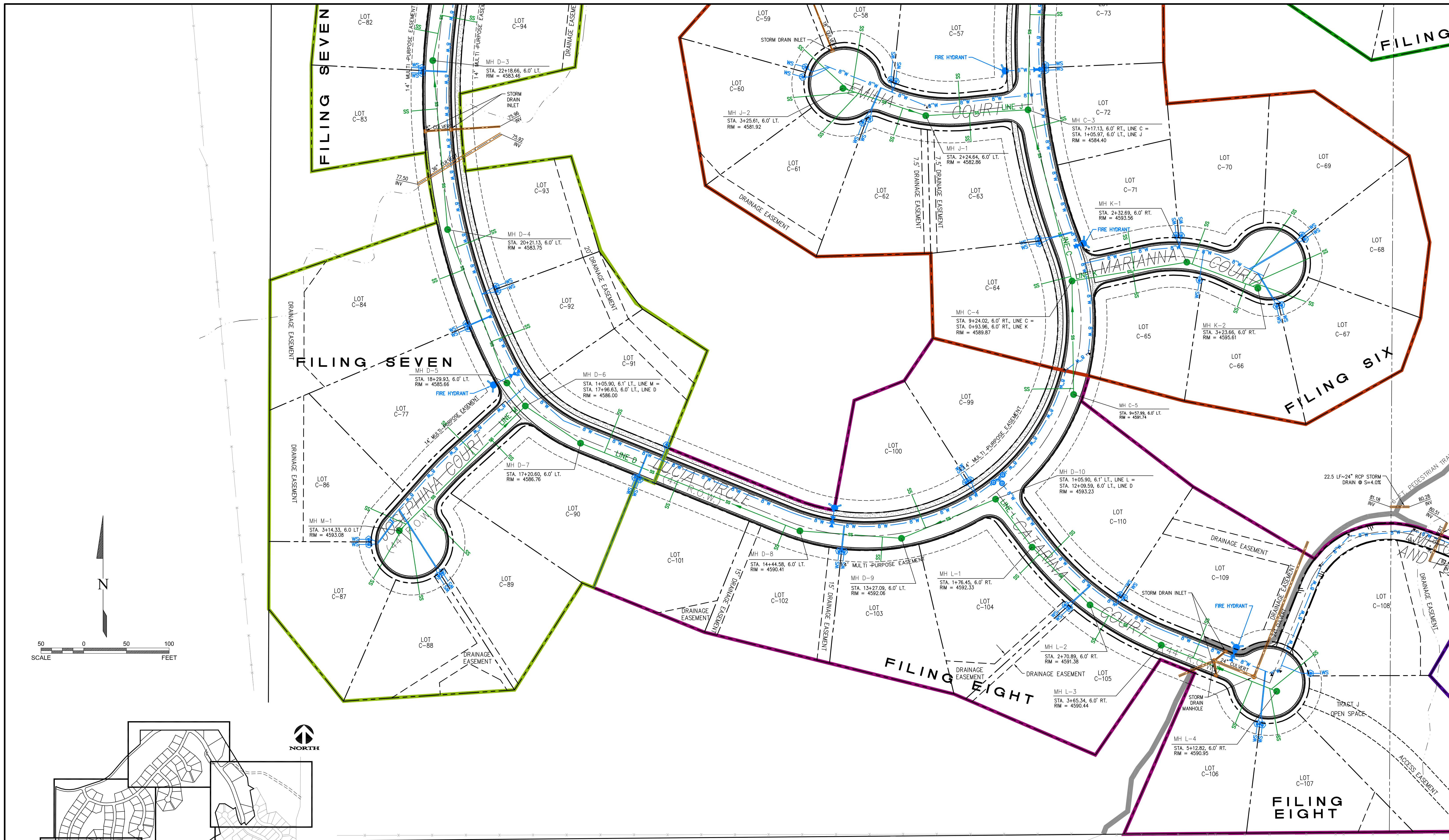


CALL UTILITY NOTIFICATION CENTER OF COLORADO CALL 2 BUSINESS DAYS IN ADVANCE BEFORE YOU DIG, GRADE, OR EXCAVATE FOR THE MARKING OF UNDERGROUND MEMBER UTILITIES.

RC&E
 Rolland Consulting Engineers, LLC
 405 Ridges Blvd, Suite A
 Grand Junction, CO 81507
 Voice: (970) 243-8300
 Fax: (970) 241-1273
 www.rceng.com

SUNSET POINTE
 PRELIMINARY PLAN
 COMPOSITE UTILITY PLAN 4

Drawn	ESS	Designed	ESS	Checked		Proj#	B7428	Rv		Sheet	13
File Name:	C:\B7428\B7428BASE2023.DWG										
Date	8/11/23										
Of	48										



SHEET KEY MAP



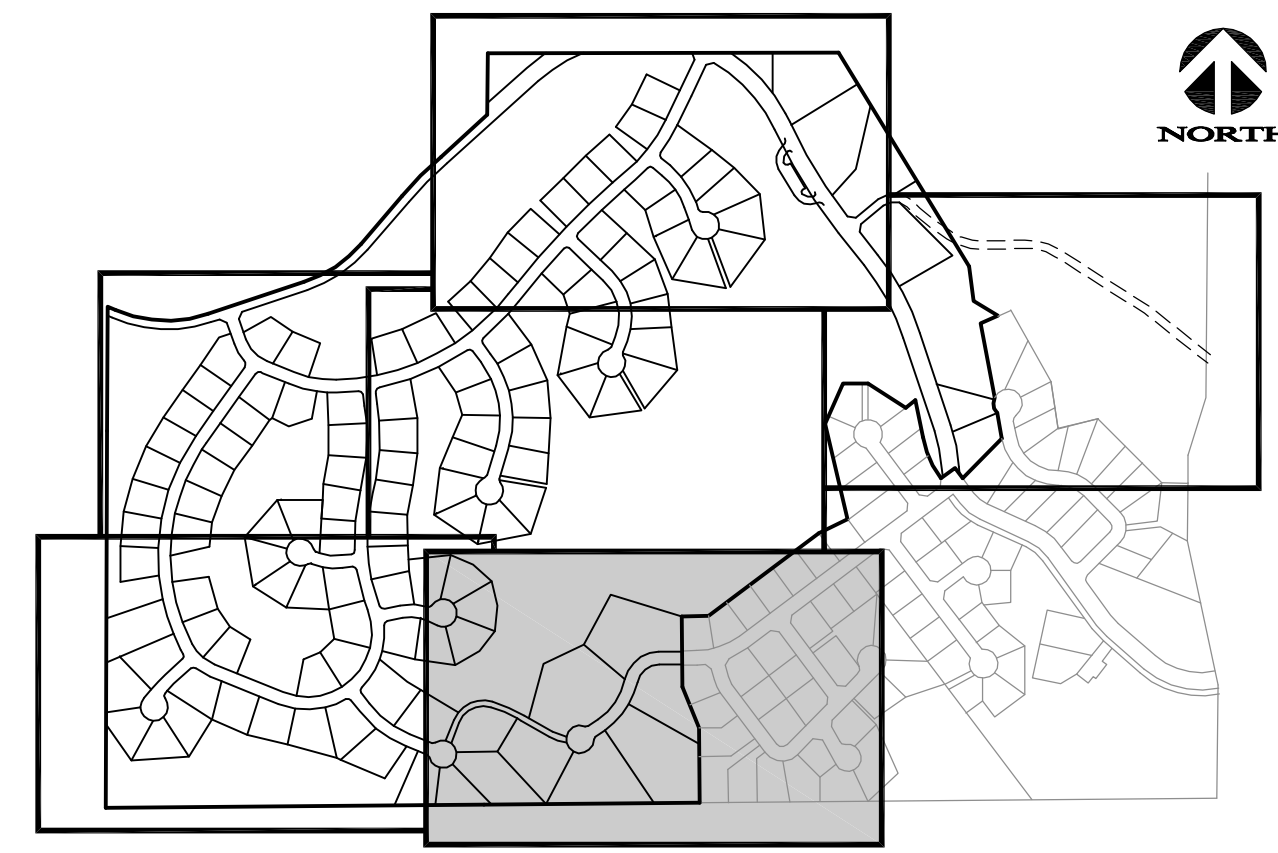
811
 Know what's below.
 Call before you dig.
 CALL UTILITY NOTIFICATION CENTER OF COLORADO CALL 2 BUSINESS DAYS IN ADVANCE BEFORE YOU DIG, GRADE, OR EXCAVATE FOR THE MARKING OF UNDERGROUND MEMBER UTILITIES.

RCE
 Roland Consulting Engineers, LLC
 405 Ridges Blvd, Suite A
 Grand Junction, CO 81507
 Voice: (970) 243-8300
 Fax: (970) 241-1273
 www.rcegi.com

**SUNSET POINTE
 PRELIMINARY PLAN**
COMPOSITE UTILITY PLAN 5

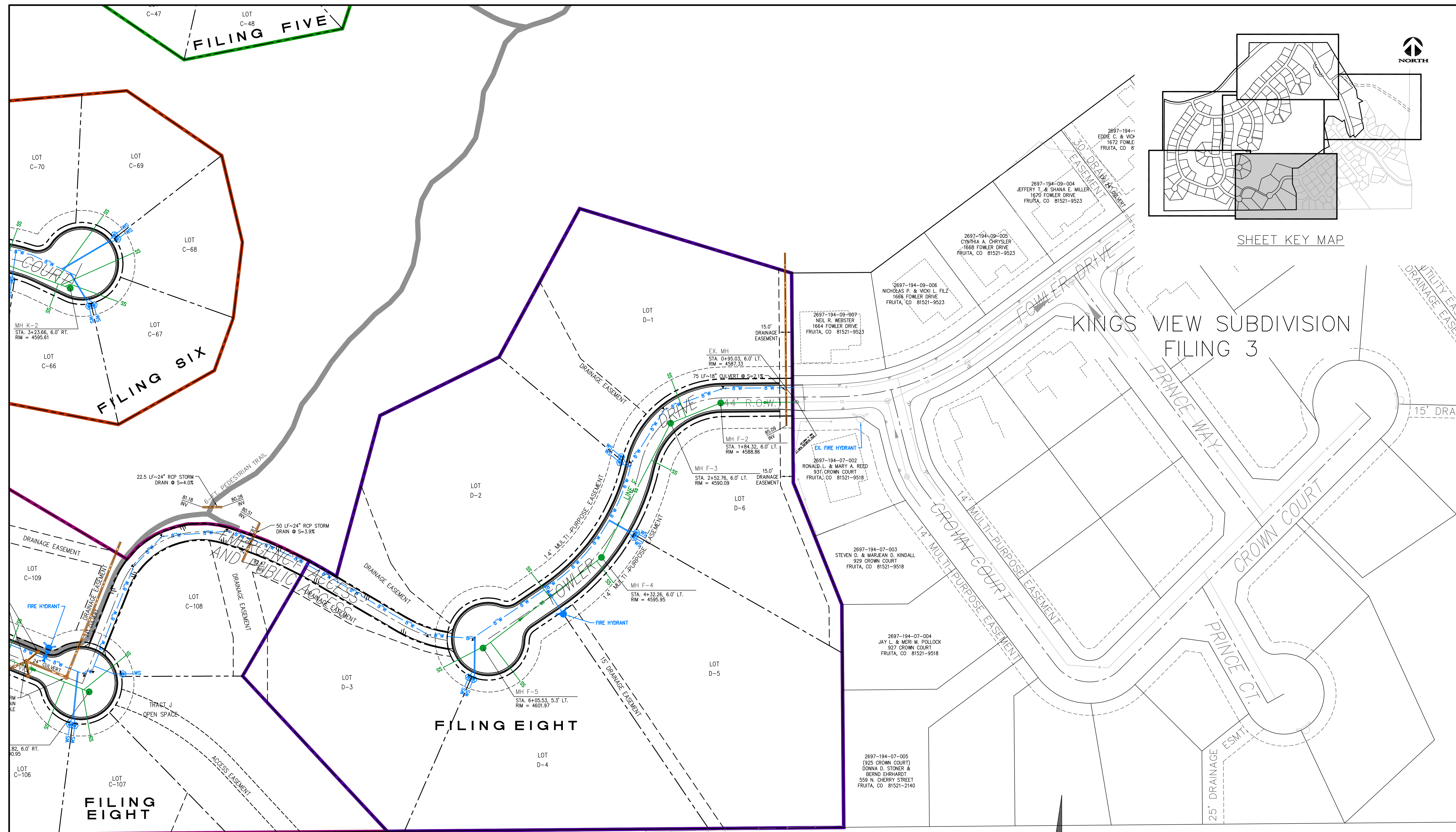
Drawn	ESS	Designed	ESS	Checked		Proj#	B7428	Rv		Sheet	14
File Name:	C:/B7428/B7428BASE2023.DWG						Date	8/11/23	Of	48	

FILING FIVE



SHEET KEY MAP

KINGS VIEW SUBDIVISION FILING 3



FILING EIGHT

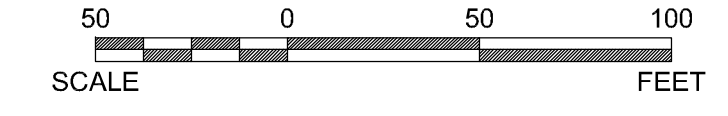
FILING EIGHT



Know what's below.
Call before you dig.

CALL UTILITY NOTIFICATION CENTER OF COLORADO CALL 2 BUSINESS DAYS IN ADVANCE BEFORE YOU DIG, GRADE, OR EXCAVATE FOR THE MARKING OF UNDERGROUND MEMBER UTILITIES.

2697-301-08-005
STEVE J & GLENNA M VOGL
945 PRINCE CT
FRUITA, CO 81521-9530
35.710754 Acres



RCE
Roland Consulting Engineers, LLC
405 Ridges Blvd, Suite A
Grand Junction, CO 81507
Voice: (970) 243-8300
Fax: (970) 241-1273
www.rcegi.com

SUNSET POINTE PRELIMINARY PLAN

COMPOSITE UTILITY PLAN 6

Drawn	ESS	Designed	ESS	Checked		Proj#	B7428	Rv		Sheet	15	
File Name:	c:\B7428\B7428BASE2023.DWG						Date	8/11/23	Of	48		