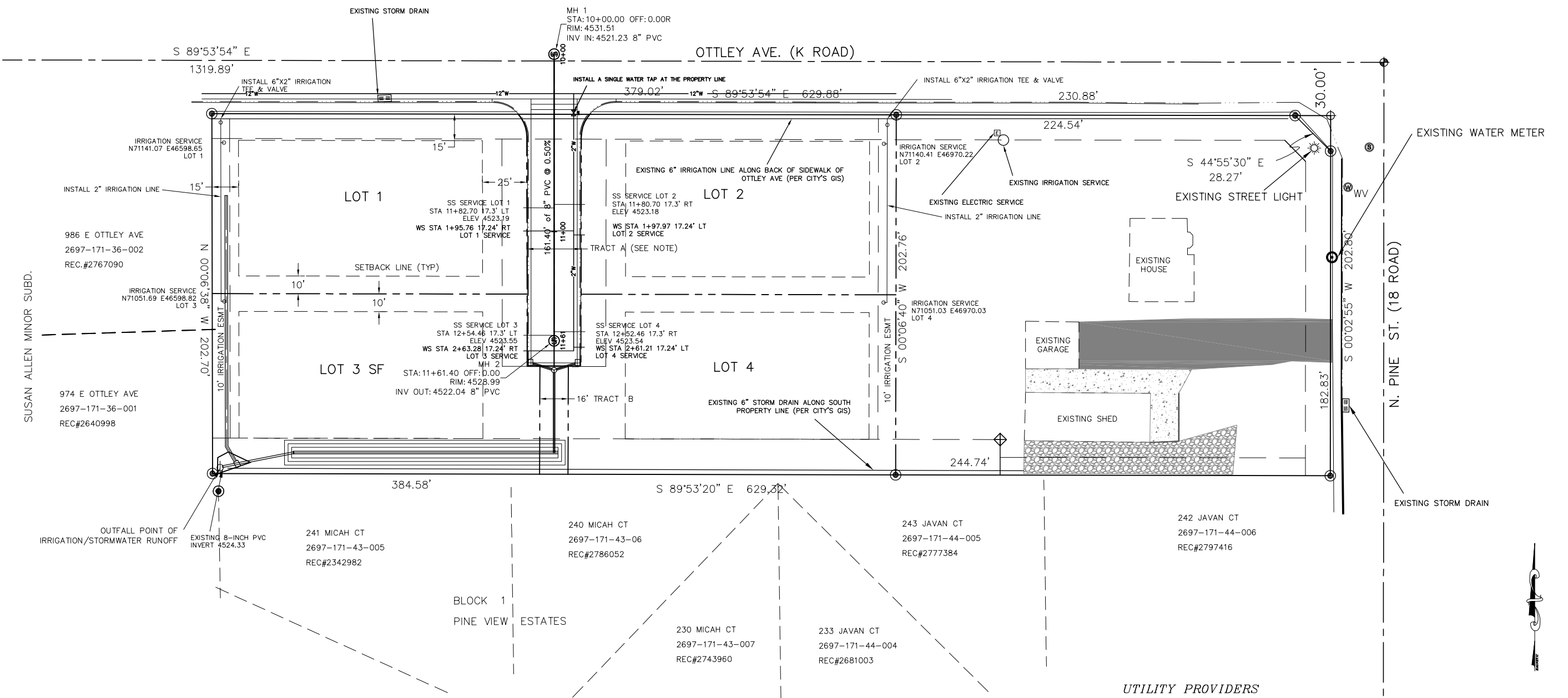


UTILITY NOTIFICATION CENTER OF COLORADO

CALL 811
THREE WORKING DAYS BEFORE YOU DIG, GRADE OR EXCAVATE FOR THE MARKING OF UNDERGROUND UTILITIES.

PREPARED BY JEK
REVIEWED BY JEK
DATE 05-29-2023
SCALE 1" = 30'
JOB NO. 1050 OTTLEY



NO.	DATE	DESCRIPTION

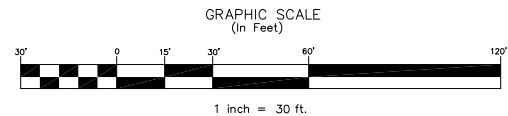
COMPOSITE PLAN
 1050 OTTLEY AVENUE
 FRUITA, COLORADO

UTILITY PROVIDERS

- | | |
|-------------------|----------------|
| POTABLE WATER | UTE WATER |
| SANITARY SEWER | CITY OF FRUITA |
| IRRIGATION WATER | GRAND VALLEY |
| FIRE PROTECTION | CITY OF FRUITA |
| POLICE PROTECTION | CITY OF FRUITA |
| TELEPHONE | CENTURYLINK |
| ELECTRICITY | XCEL ENERGY |

- COMPOSITE PLAN NOTES:
1. THE SANITARY SEWER CONNECTION (TIE-IN) IS AT OTTLEY AVENUE.
 2. ONE WATER SERVICE TAP WILL BE PROVIDED AT PROPERTY LINE WHICH WILL PROVIDE SERVICE TO EACH LOT.
 3. DRY UTILITIES WILL BE PROVIDED TO EACH LOT.

PROJECT BENCHMARK
MCSM #19 NORTHEAST CORNER
NE ¼ SECTION 17 T1N R2W U.M.
N71186.23 E47251.74



THE CITY OF FRUITA REVIEW CONSTITUTES GENERAL COMPLIANCE WITH THE CITY'S DEVELOPMENT STANDARDS, SUBJECT TO THESE PLANS BEING SEALED, SIGNED, AND DATED BY THE PROFESSIONAL OF RECORD. REVIEW BY THE CITY DOES NOT CONSTITUTE APPROVAL OF THE PLAN DESIGN. THE CITY NEITHER ACCEPTS NOR ASSUMES ANY LIABILITY FOR ERRORS OR OMISSIONS. ERRORS IN THE DESIGN OR CALCULATIONS REMAIN THE RESPONSIBILITY OF THE PROFESSIONAL OF RECORD.

CONSTRUCTION MUST COMMENCE WITHIN ONE YEAR FROM THE DATE OF PLAN SIGNATURE.

CITY DEVELOPMENT ENGINEER _____ DATE _____

John E Kornfeld, P.E.
399 Spanish Fields Drive
Spanish Fork, UT 84660
(702) 377-8382
info@rhinoengineers.com
www.rhinoengineers.com

