

N. MULBERRY CONCEPTUAL DESIGN

Prepared for City of Fruita
July 20, 2022

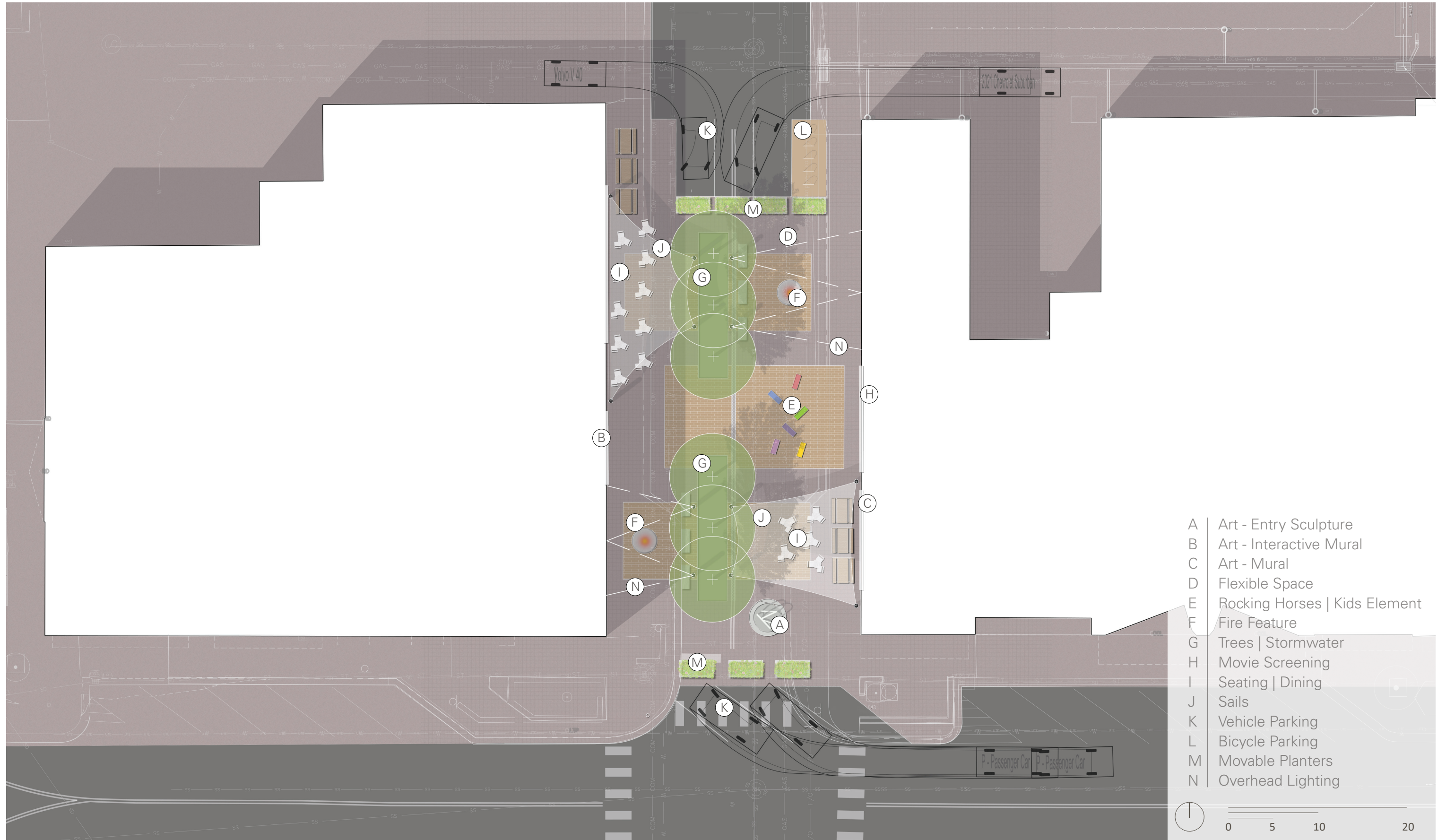


Prepared by

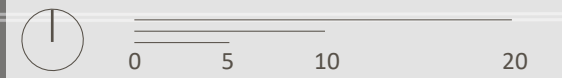
DESIGNWORKSHOP

1390 Lawrence Street, Suite 100 | Denver, Colorado 80204 | 303.623.5186

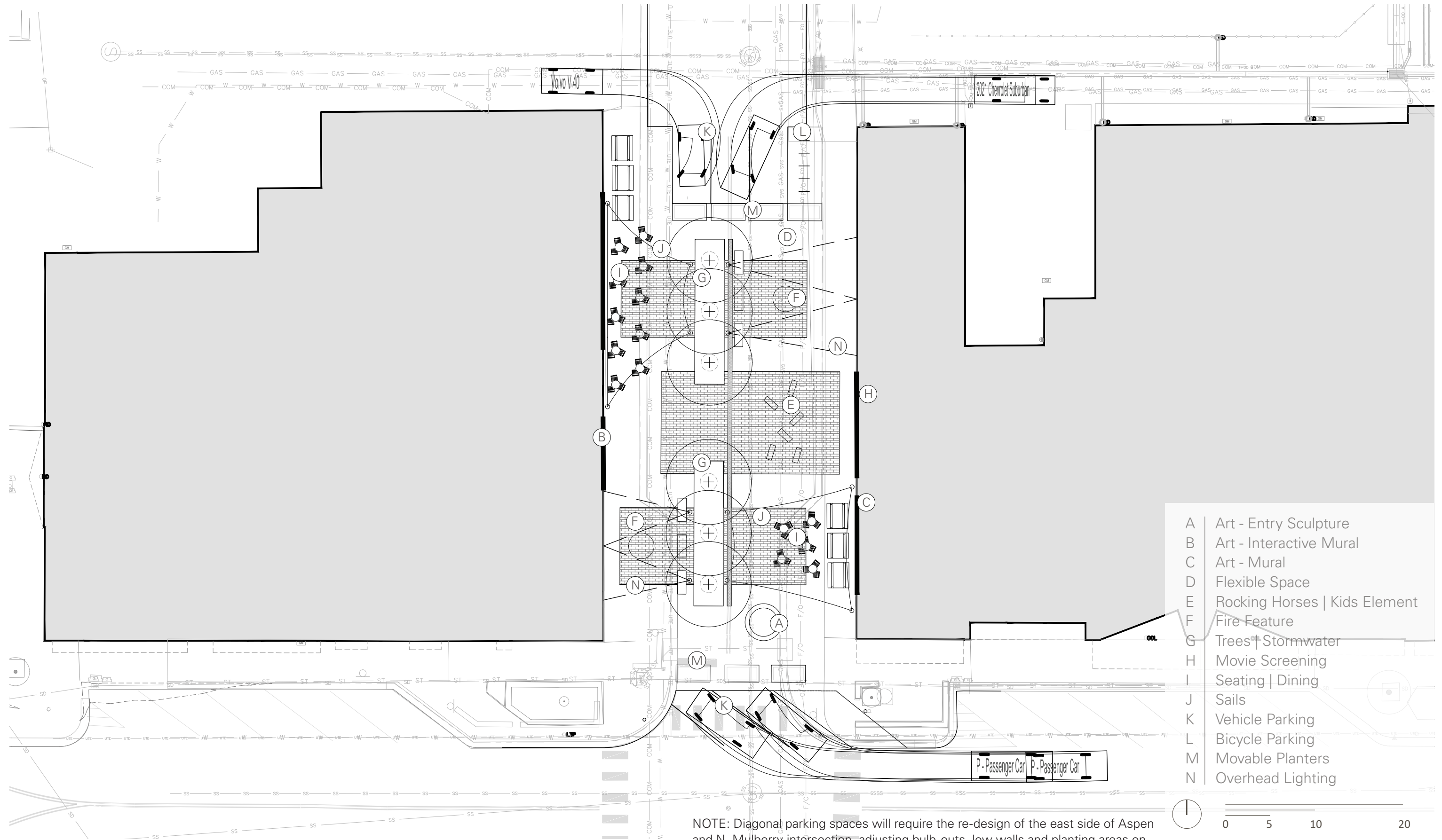
SITE PLAN



- A Art - Entry Sculpture
- B Art - Interactive Mural
- C Art - Mural
- D Flexible Space
- E Rocking Horses | Kids Element
- F Fire Feature
- G Trees | Stormwater
- H Movie Screening
- I Seating | Dining
- J Sails
- K Vehicle Parking
- L Bicycle Parking
- M Movable Planters
- N Overhead Lighting



SITE PLAN



- A Art - Entry Sculpture
- B Art - Interactive Mural
- C Art - Mural
- D Flexible Space
- E Rocking Horses | Kids Element
- F Fire Feature
- G Trees | Stormwater
- H Movie Screening
- I Seating | Dining
- J Sails
- K Vehicle Parking
- L Bicycle Parking
- M Movable Planters
- N Overhead Lighting

NOTE: Diagonal parking spaces will require the re-design of the east side of Aspen and N. Mulberry intersection, adjusting bulb-outs, low walls and planting areas on both sides of Aspen Strdeet (north and souht) and re building ADA ramps as well as pedestrian crossing

PAVING



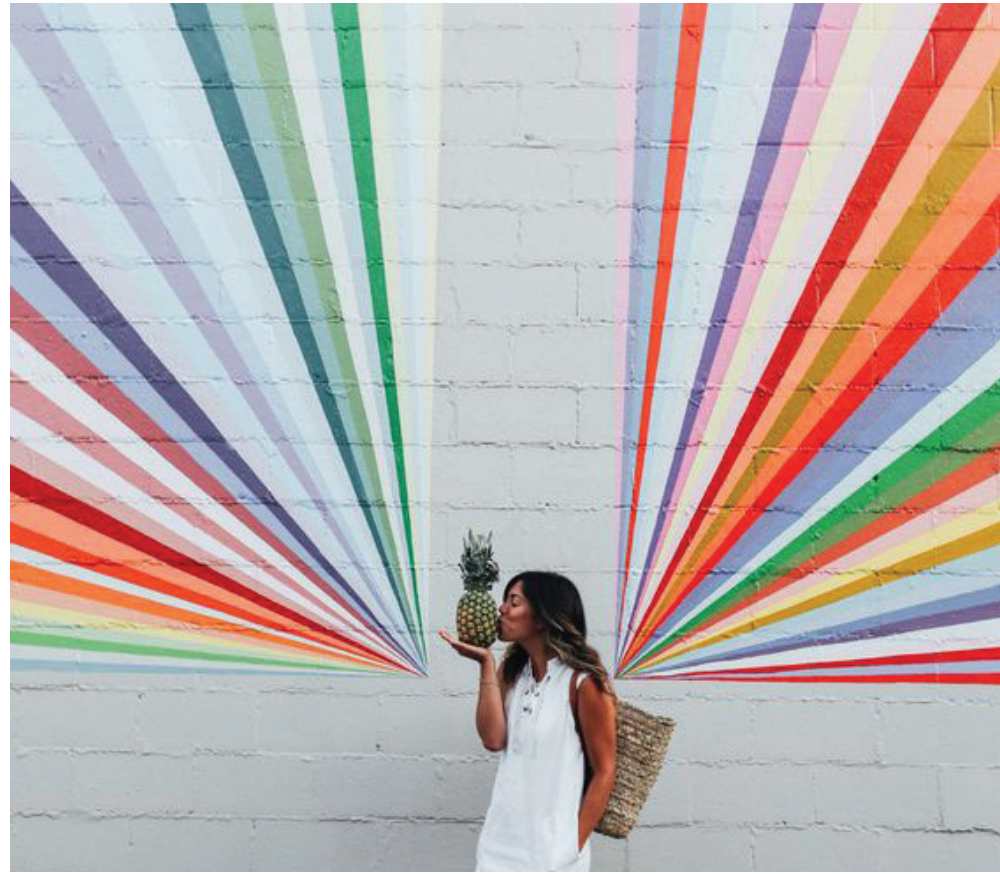
SEATING



INTERACTIVE KIDS' ELEMENT



INTERACTIVE MURAL - ART



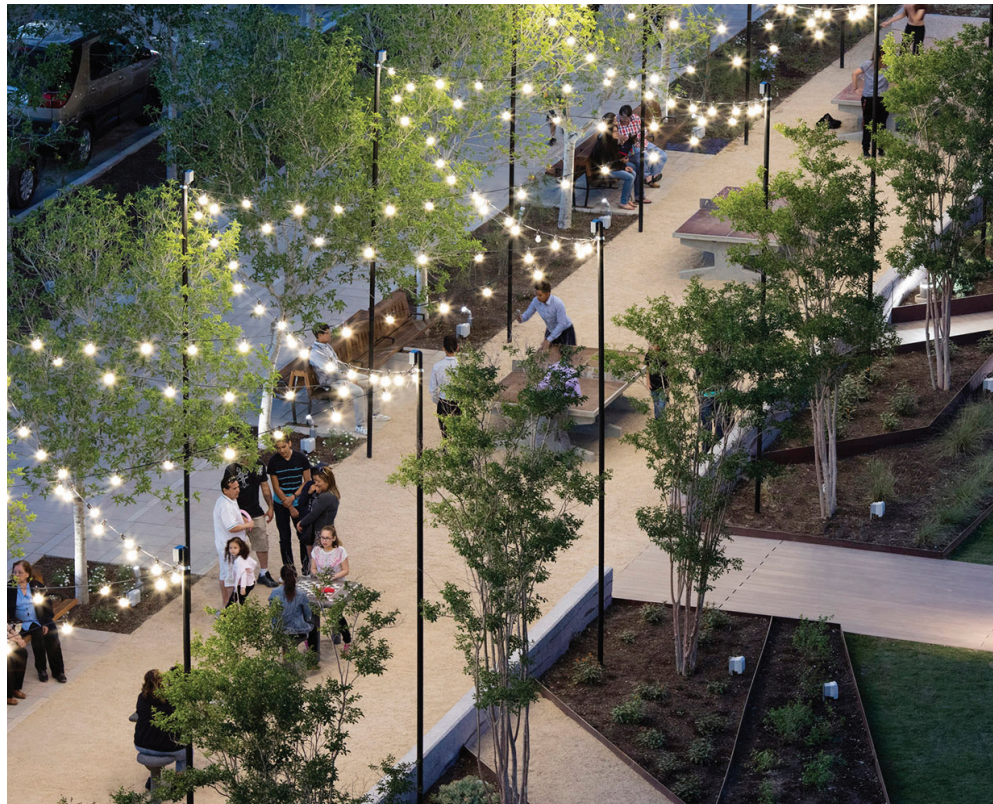
SAILS



FIRE PITS



LIGHTING



PLANTING



Celtis occidentalis - Hackberry



Morus alba - White Mulberry



Oryzopsis hymenoides - Indian Ricegrass



Nepeta 'Little Trudy' - Catmint 'Little Trudy'



Perovskia atriplicifolia - Russian Sage



Aquilegia coerulea - Rocky Mountain Columbine

PERSPECTIVE
BEFORE - BIRDS EYE VIEW



PERSPECTIVE
AFTER - BIRDS EYE VIEW



PERSPECTIVE
AFTER - BIRDS EYE VIEW



OUTDOOR
DINING AREA

PARKING

BIKE RACK

MOVABLE PLANTERS

FIRE PIT

INTERACTIVE KIDS' AREA

OUTDOOR
DINING AREA

FIRE PIT

ART

MOVABLE PLANTERS

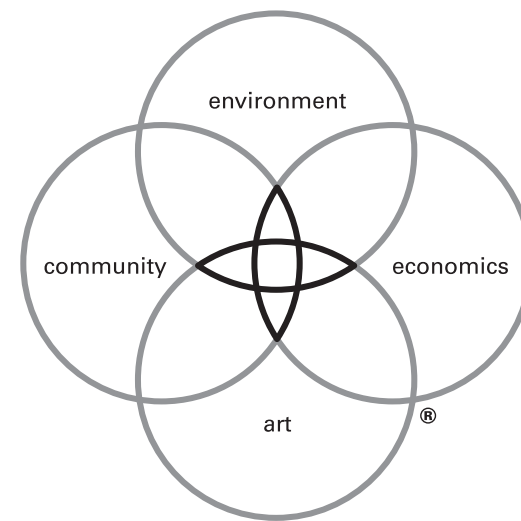
PARKING

PERSPECTIVE
BEFORE - EYE LEVEL VIEW



PERSPECTIVE
AFTER - EYE LEVEL VIEW





DW LEGACY DESIGN[®]

Legacy Design is the defining element of our practice. It is our commitment to an elevated level of design inquiry to arrive at the optimal solutions for clients. The process ensures that our projects reflect the critical issues facing the built environment and that they deliver measurable benefit to clients and communities. It is the foundation of the firm's workshop culture and guides all projects.