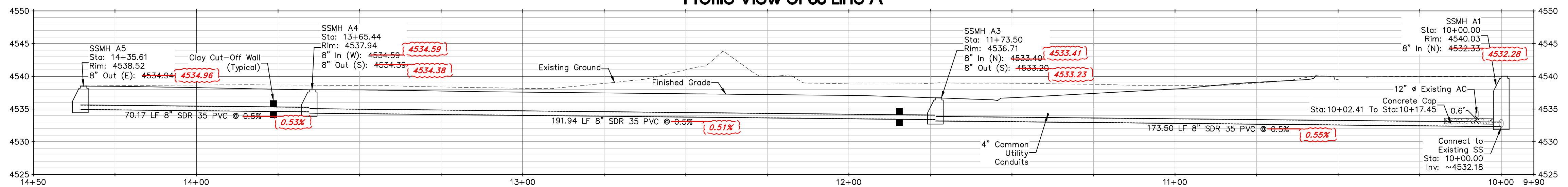


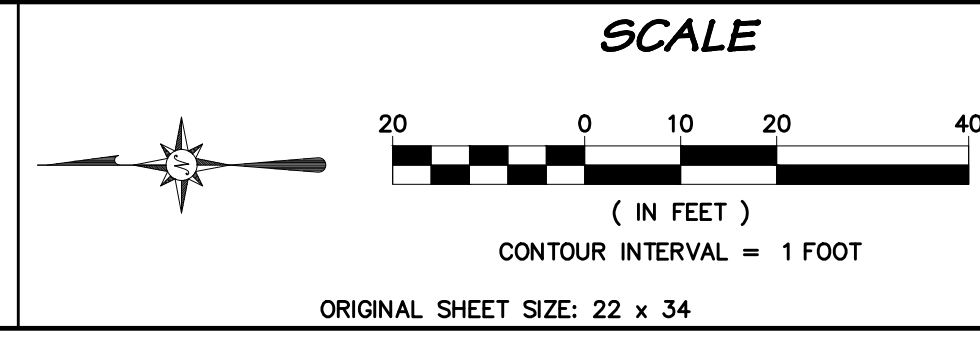
Profile View of SS Line A



BENCHMARK
 LS 24306, DH Surveys Inc.
 MFCP 2 Aluminum Cap
 on Rebar
 Sec. 9, T1, R2, U.M.
 Northing: 71231.389
 Easting: 48240.539
 Elevation: 4539.023
 Datum Source: MCLCS Zone "GVA" (NAVD 88)

APPROVED FOR CONSTRUCTION FOR ONE YEAR FROM THIS DATE.
 Acceptance of these plans does not relieve the developer, contractor, or the engineer from conformance with the City of Fruita Construction Specifications.

City of Fruita Development Engineer _____ Date _____



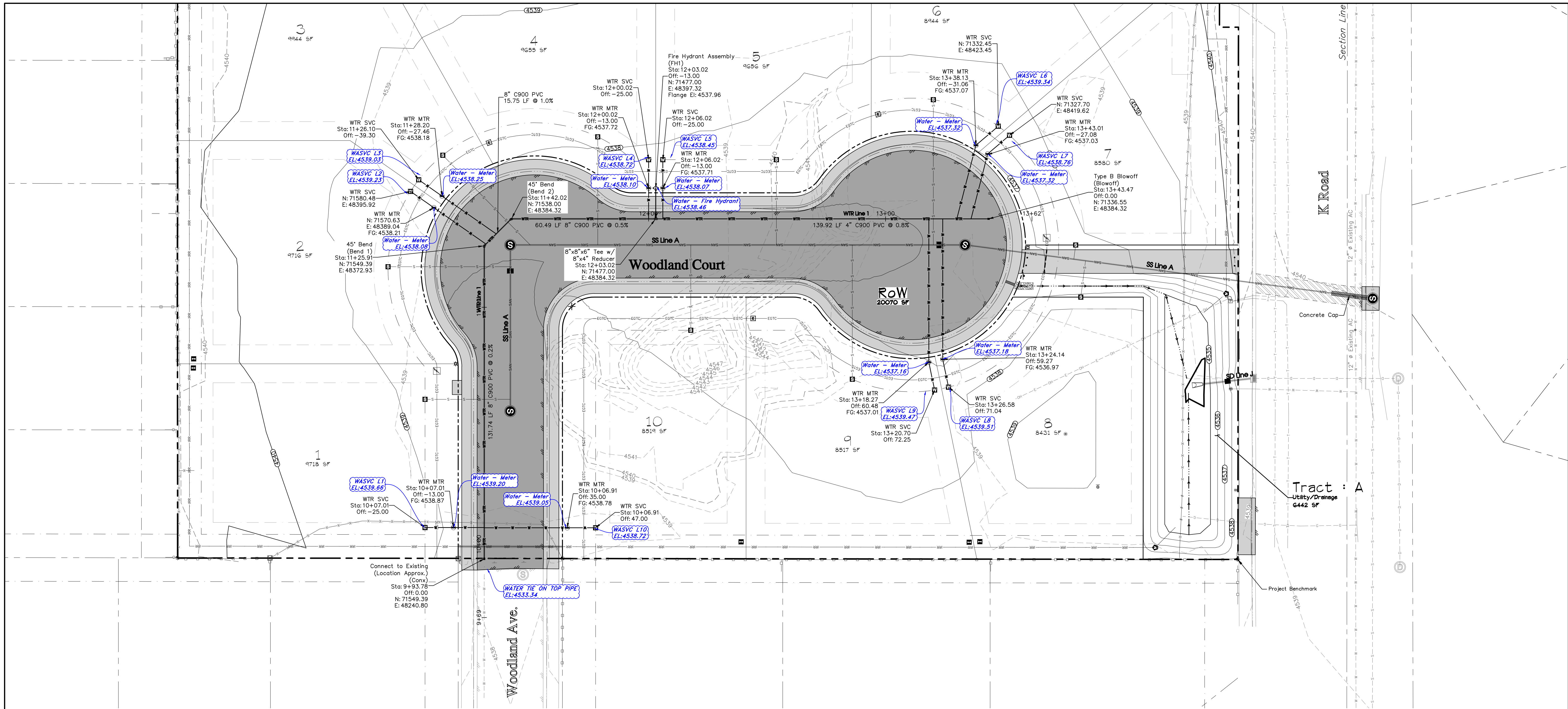
NO.	DATE	DESCRIPTION	BY
1	11.May.2018	Revised per Ute Water Comments	nmr
2	03.July.2018	Revised to Record Preliminary Conditions	jmm



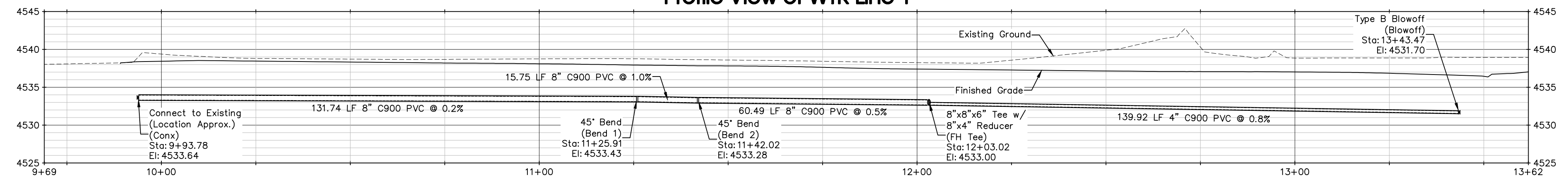
RIVER CITY CONSULTANTS
 744 Horizon Court, Suite 110
 Grand Junction, CO 81506
 Phone: 970.241.4722
 Fax: 970.241.8841
 PROJECT #: 1718-001
 DATE ISSUED: 02.May.2018
 DRAWN BY: nmr
 CHECKED BY: jmm
 HORIZ: 1" = 20'
 VERT: 1" = 10'

GREA, LLC
 Pinewood Estates
 Sanitary Sewer Plan & Profile
 Line A
 C 7

S:\PROJECTS\1718 BDA Builders\001 1816 K Road\Design\dwg\1718-001-AsBuilt.dwg [07-SS Prop]



Profile View of WTR Line 1



Note:
1. Flowfill shallow services per City of Fruita standards.

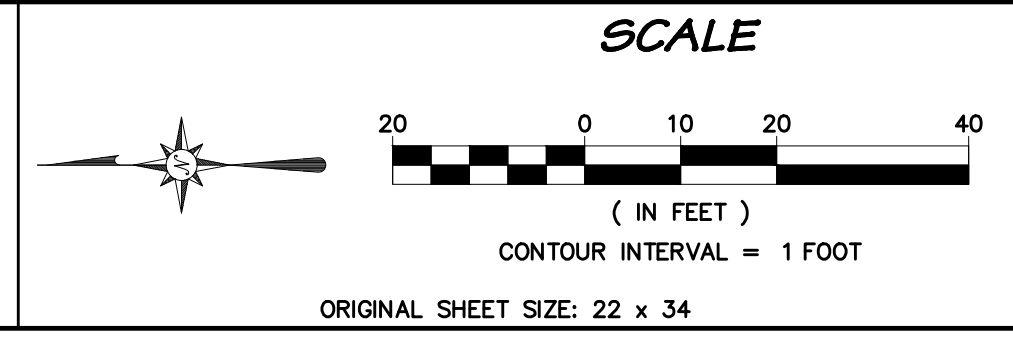
BENCHMARK
LS 24306, DH Surveys Inc.
MFCP 2 Aluminum Cap
on Rebar
Sec. 9, T1, R2, U.M.
Northing: 71231.389
Easting: 48240.539
Elevation: 4539.023
Datum Source: MCLCS Zone "GVA" (NAVD 88)

APPROVED FOR CONSTRUCTION FOR ONE YEAR FROM THIS DATE.

Ute Water District Representative _____ Date _____

APPROVED FOR CONSTRUCTION FOR ONE YEAR FROM THIS DATE.
Acceptance of these plans does not relieve the developer, contractor, or the engineer from conformance with the City of Fruita Construction Specifications.

City of Fruita Development Engineer _____ Date _____



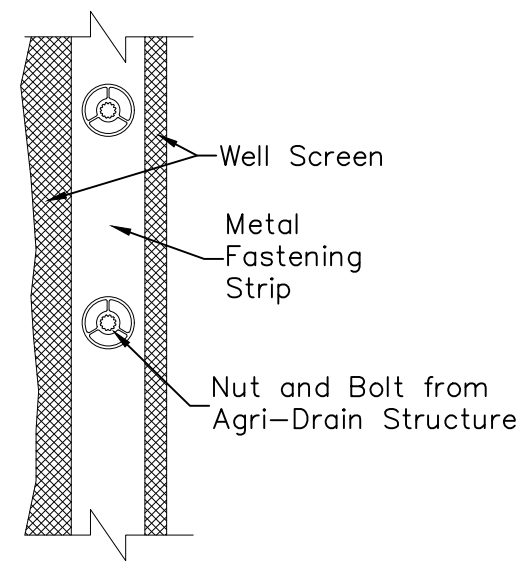
REVISIONS		
NO.	DATE	DESCRIPTION
1	11.May.2018	Revised per Ute Water Comments
2	03.July.2018	Revised to Record Preliminary Conditions



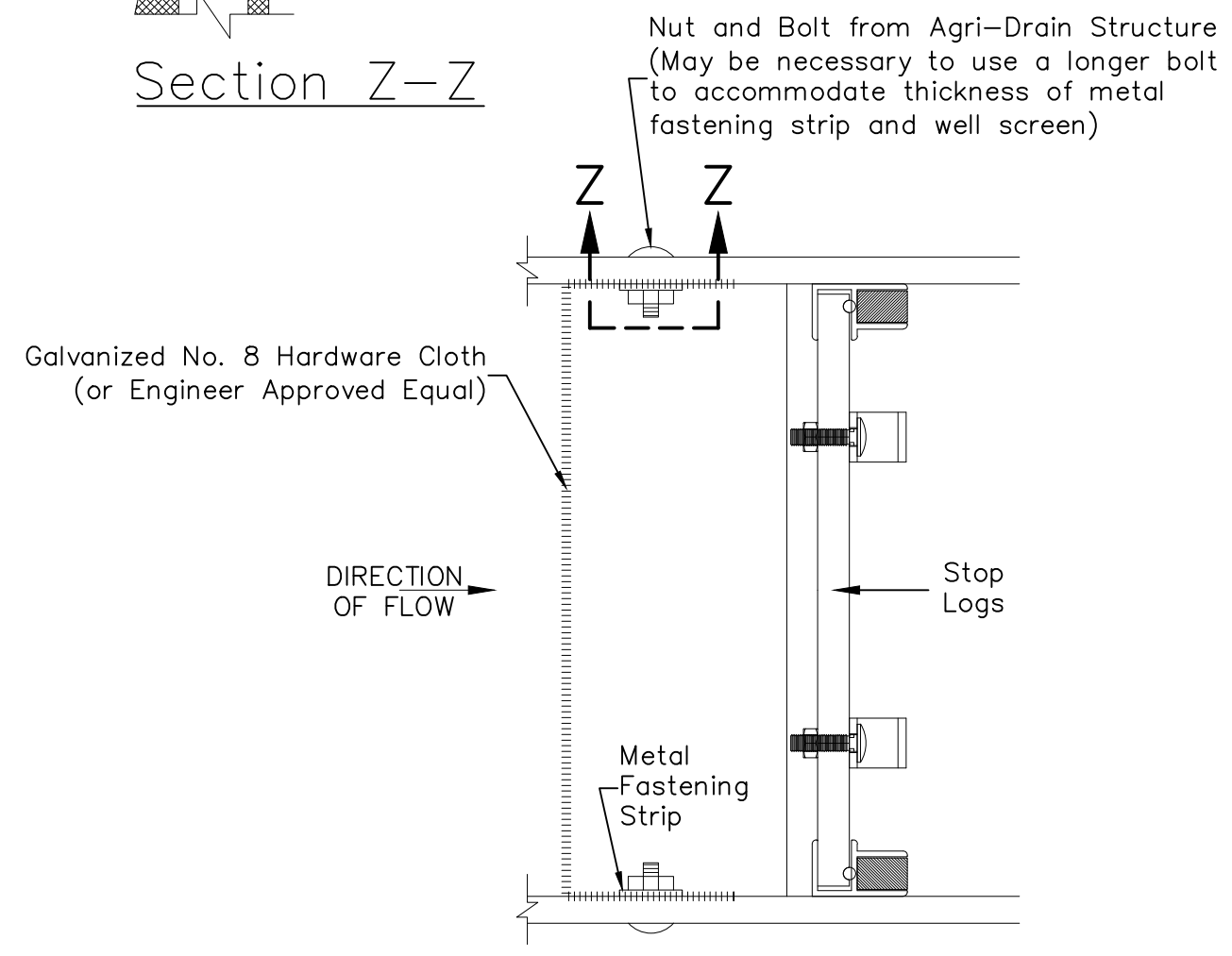
RIVER CITY CONSULTANTS
744 Horizon Court, Suite 110
Grand Junction, CO 81506
Phone: 970.241.4722
Fax: 970.241.8841
www.rcowest.com

PROJECT #: 1718-001
DATE ISSUED: 02.May.2018
DRAWN BY: nmr
CHECKED BY: jwm
HORIZ: 1" = 20'
VERT: 1" = 10'

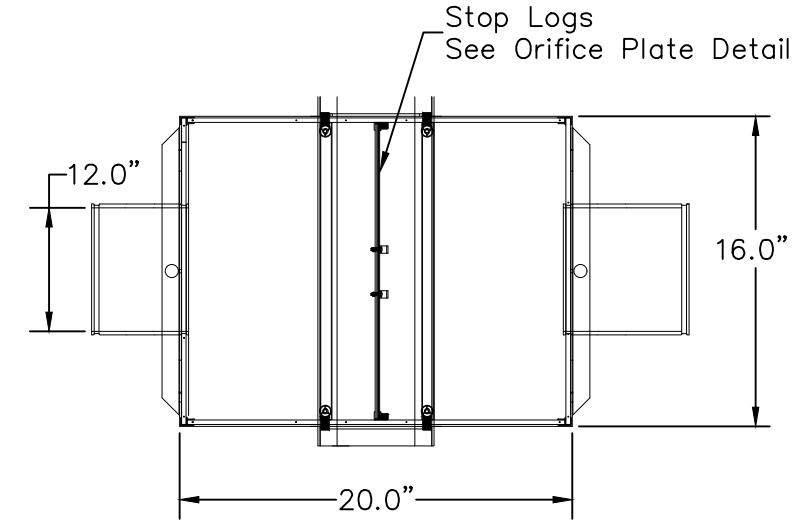
GREAA, LLC
Pinewood Estates
Water Line Plan & Profile
C 8



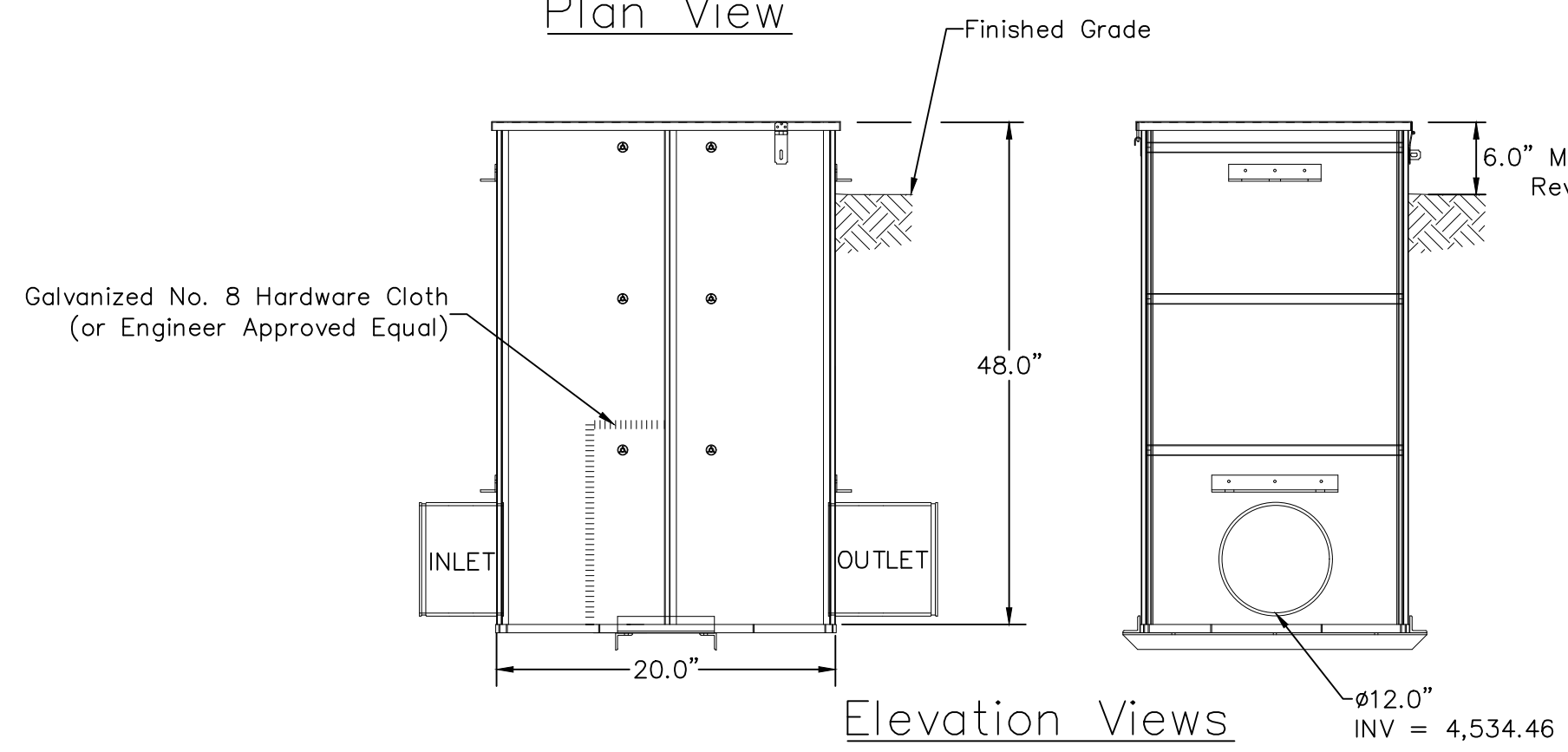
Section Z-Z



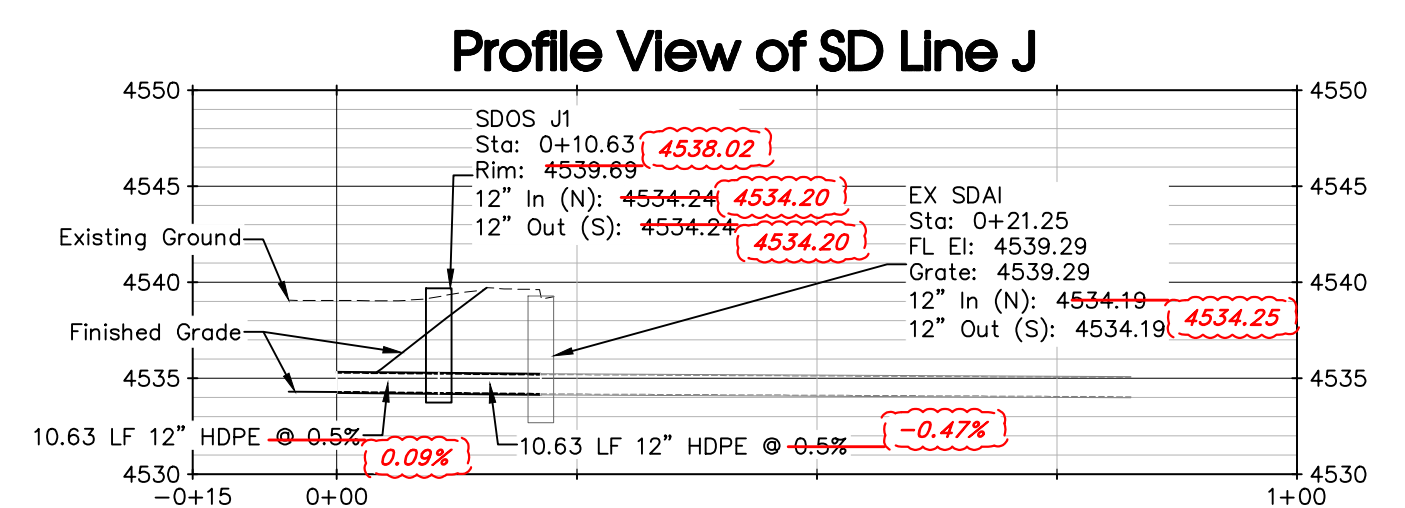
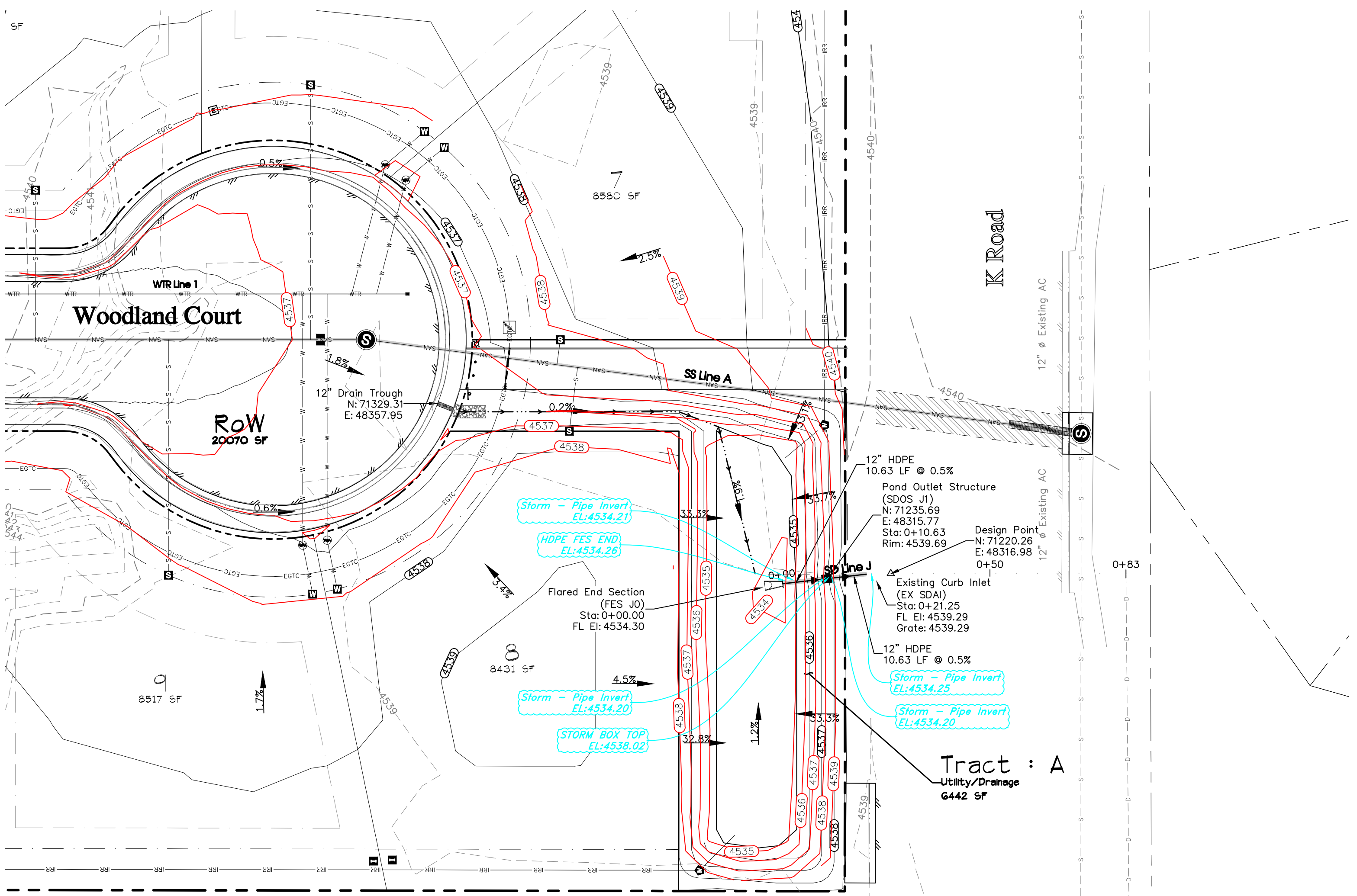
Well Screen Fastening Detail



Plan View



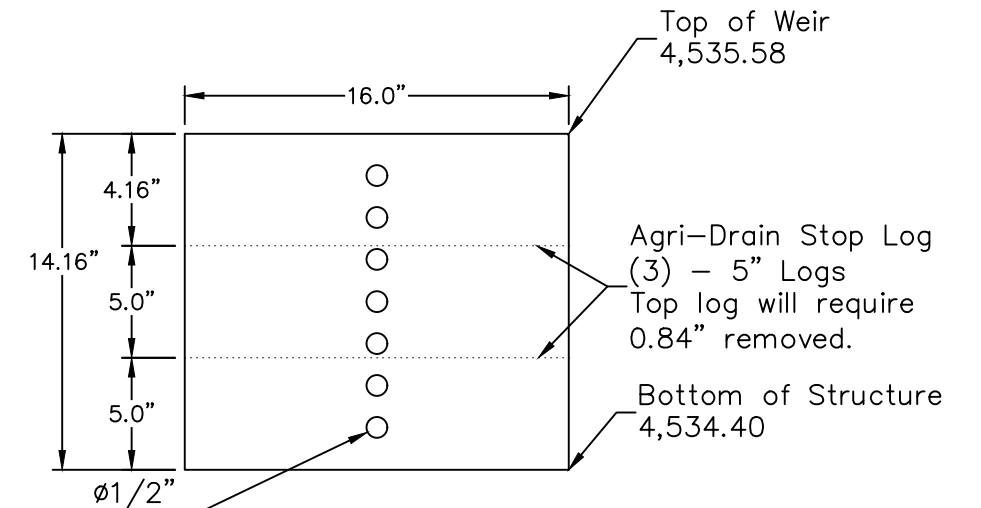
Elevation Views
Agri-Drain Structure Details
(NTS)



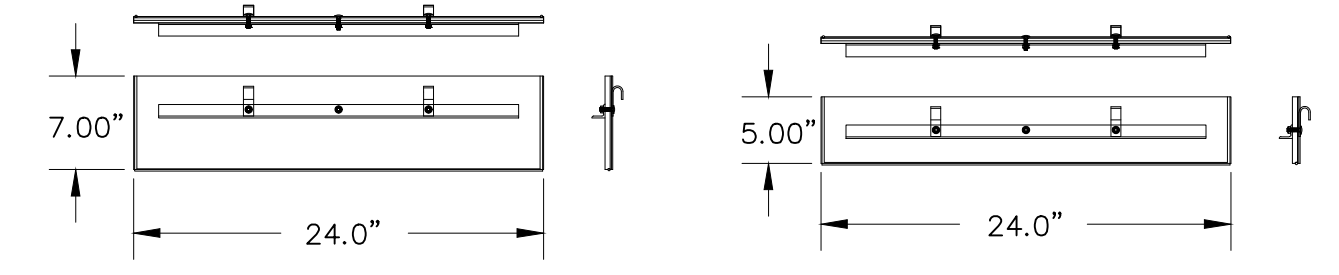
Profile View of SD Line J

Detention Pond Volumes			
	Pond WSEL	Pond Volume (CF)	Discharge at Design Point (CFS)
10-Year	4,535.89	2,420	0.86
100-Year	4,536.19	4,540	2.27

4,535.57 4,536.43



Orifice Plate Detail
(NTS)

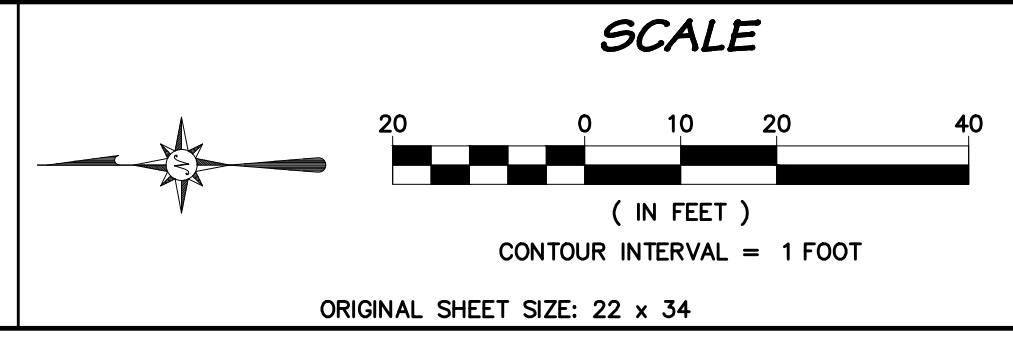


Stop Log Details

BENCHMARK
LS 24306, DH Surveys Inc.
MFCP 2 Aluminum Cap
on Rebar
Sec. 9, T1, R2, U.M.
Northing: 71231.389
Easting: 48240.539
Elevation: 4539.023
Datum Source: MCLCS Zone "GVA" (NAVD 88)

APPROVED FOR CONSTRUCTION FOR ONE YEAR FROM THIS DATE.

APPROVED FOR CONSTRUCTION FOR ONE YEAR FROM THIS DATE.



REVISIONS		
NO.	DATE	DESCRIPTION
1	03.July.2018	Revised to Record Preliminary Conditions
2	18.Sep.2018	Revised to Record Preliminary Pond Conditions

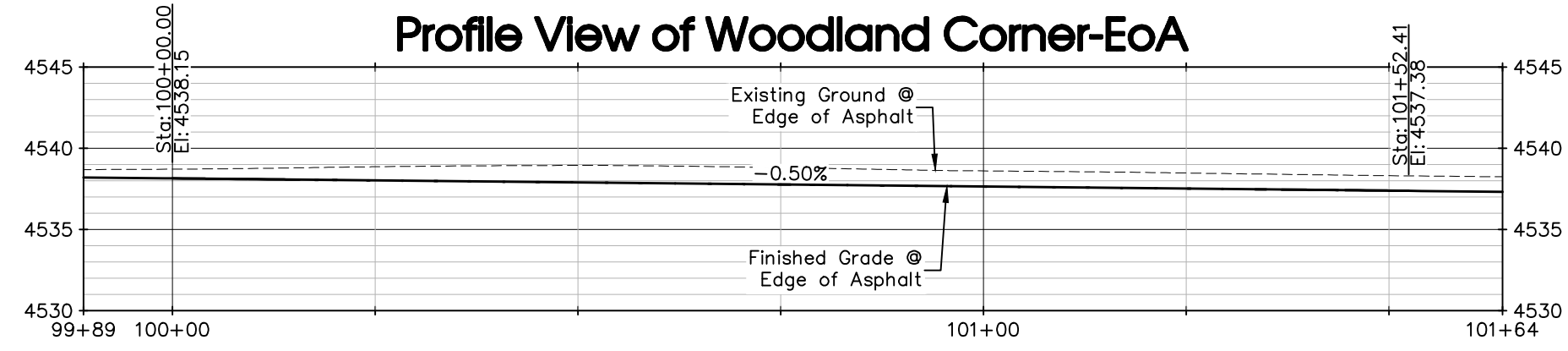


RIVER CITY CONSULTANTS
744 Horizon Court, Suite 110
Grand Junction, CO 81506
Phone: 970.241.4722
Fax: 970.241.8841

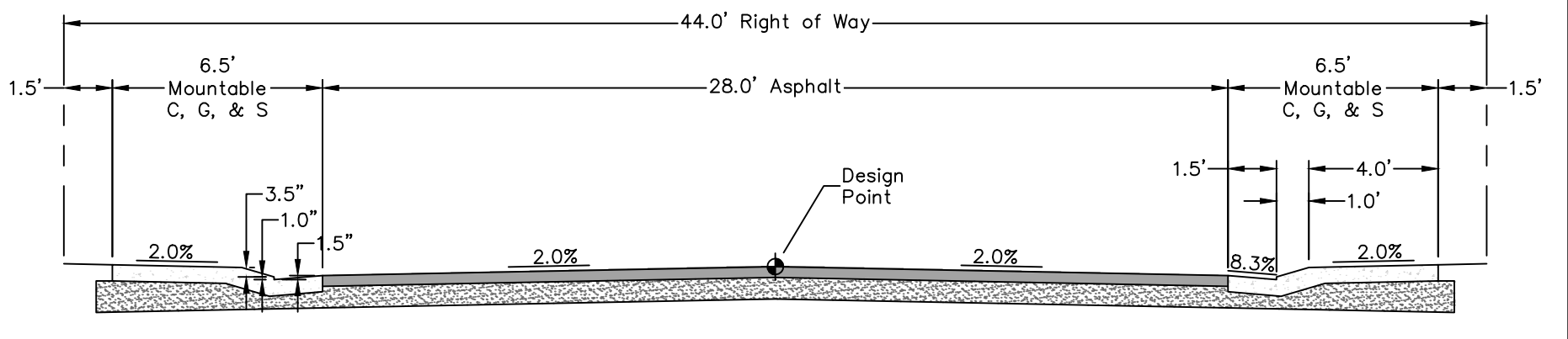
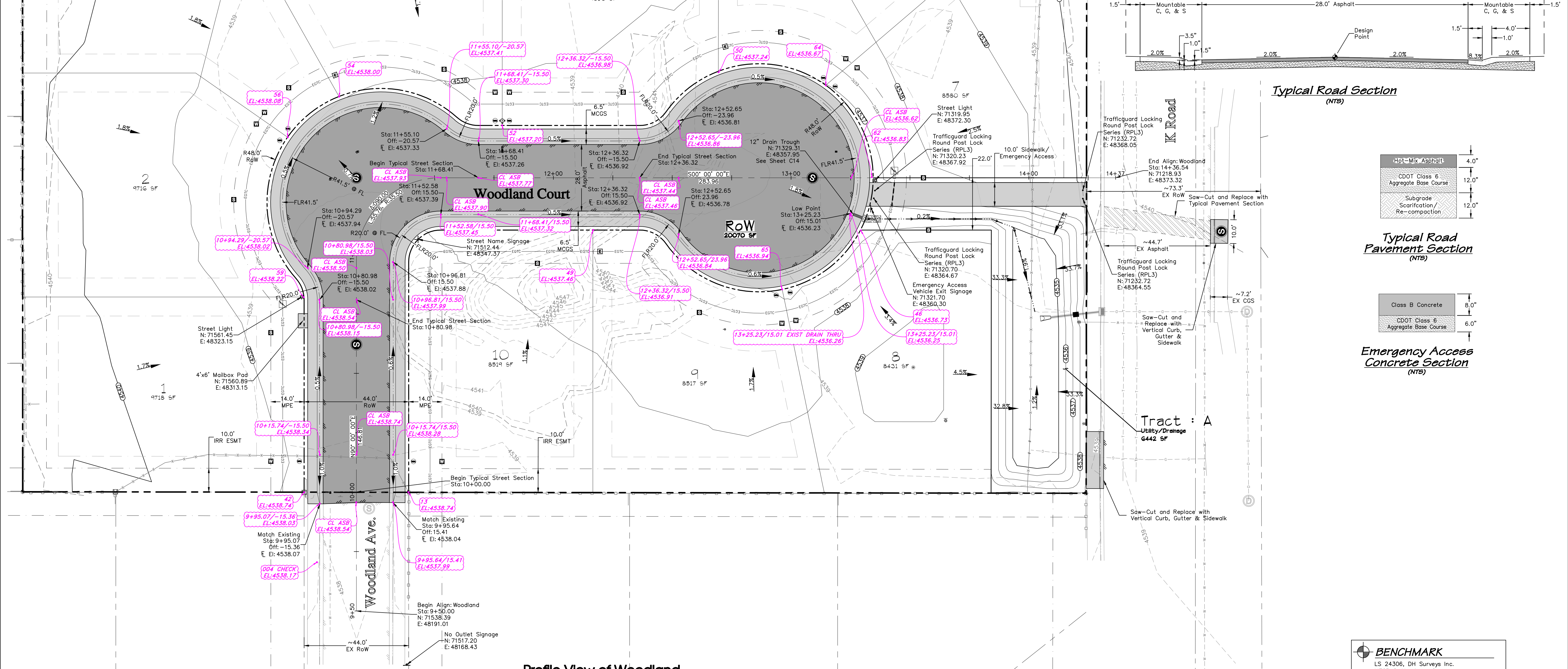
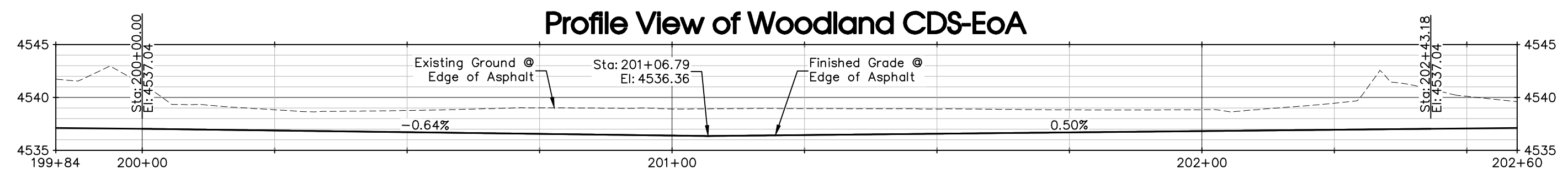
GREA, LLC
Pinewood Estates
Storm Drain Plan & Profile

PROJECT #: 1718-001 DATE ISSUED: 02.May.2018
DRAWN BY: nmr HORIZ: 1" = 20'
CHECKED BY: jwm VERT: 1" = 10'

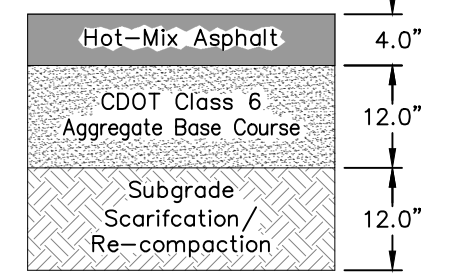
Profile View of Woodland Corner-EoA



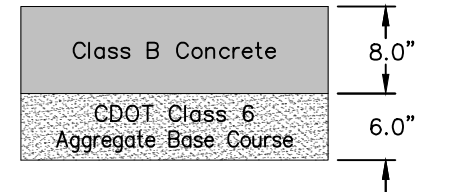
Profile View of Woodland CDS-EoA



Typical Road Section (NTS)

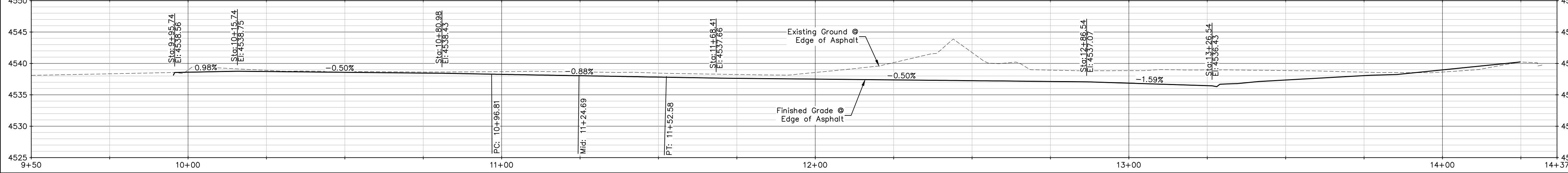


Typical Road Pavement Section (NTS)



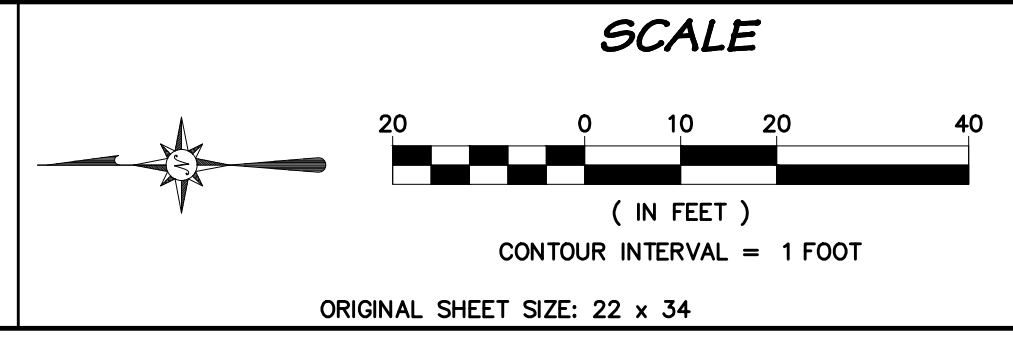
Emergency Access Concrete Section (NTS)

Profile View of Woodland



BENCHMARK
 LS 24306, DH Surveys Inc.
 MFPC 2 Aluminum Cap
 on Rebar
 Sec. 9, T1, R2, U.M.
 Northing: 71231.389
 Easting: 48240.539
 Elevation: 4539.023
 Datum Source: MCLCS Zone "GVA" (NAVD 88)

APPROVED FOR CONSTRUCTION FOR ONE YEAR FROM THIS DATE.
 Acceptance of these plans does not relieve the developer, contractor, or the engineer from conformance with the City of Fruita Construction Specifications.



NO.	DATE	DESCRIPTION	BY
1	17.Sep.2018	Revised to Record Preliminary Conditions.	jmm



RIVER CITY CONSULTANTS
 744 Horizon Court, Suite 110
 Grand Junction, CO 81506
 Phone: 970.241.4722
 Fax: 970.241.8841
 www.rcowest.com

GREA, LLC
 Pinewood Estates
 Street Plan & Profile

PROJECT #: 1718-001 DATE ISSUED: 02.May.2018
 DRAWN BY: nmr HORIZ: 1" = 20'
 CHECKED BY: jmm VERT: 1" = 10'

City of Fruita Development Engineer Date