

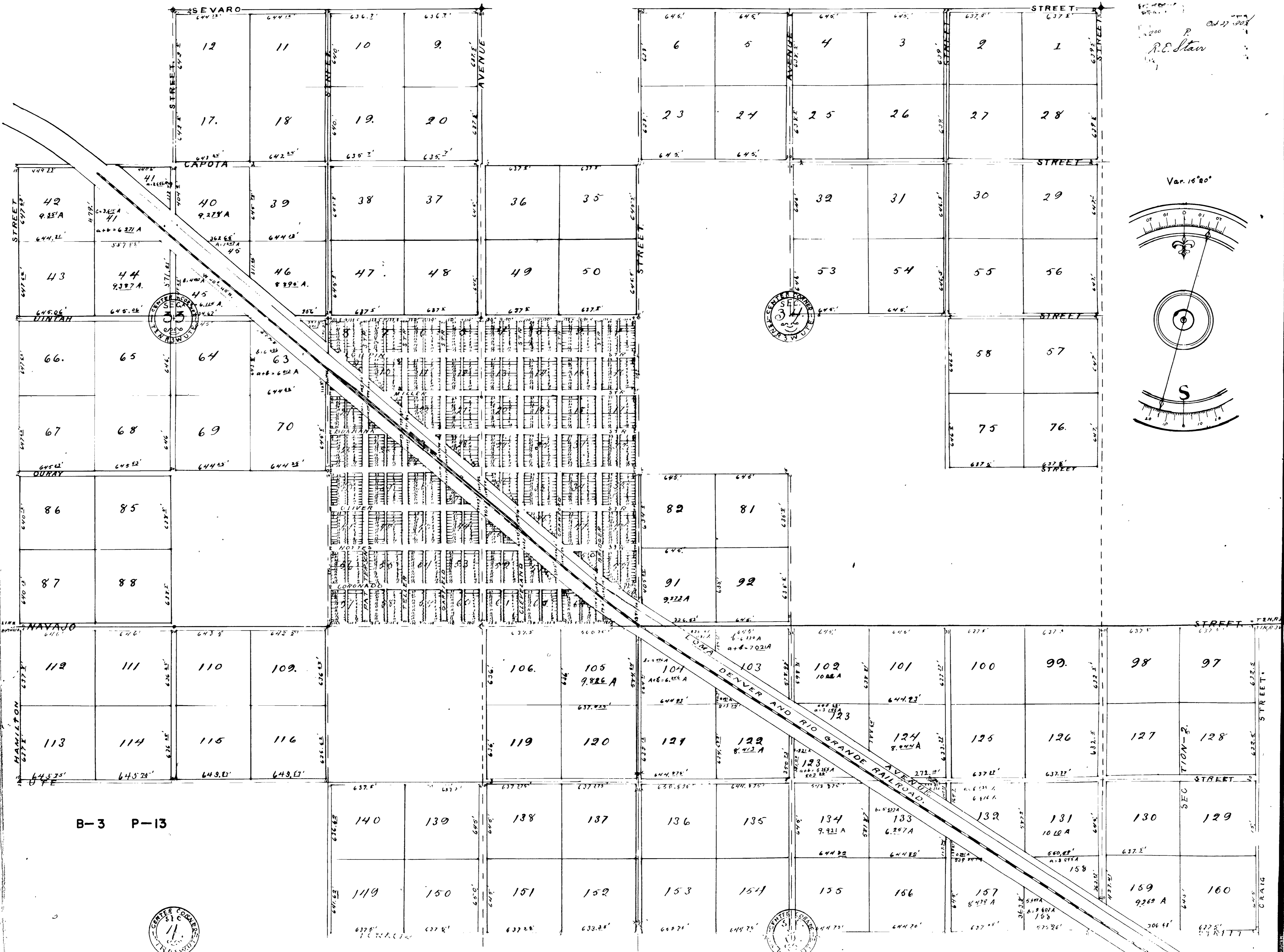
# MAP OF THE LOMA TOWNSITE.

Surveyed By  
Nelson F. Bruce and F. Lowenhagen  
August and September, A.D. 1908.

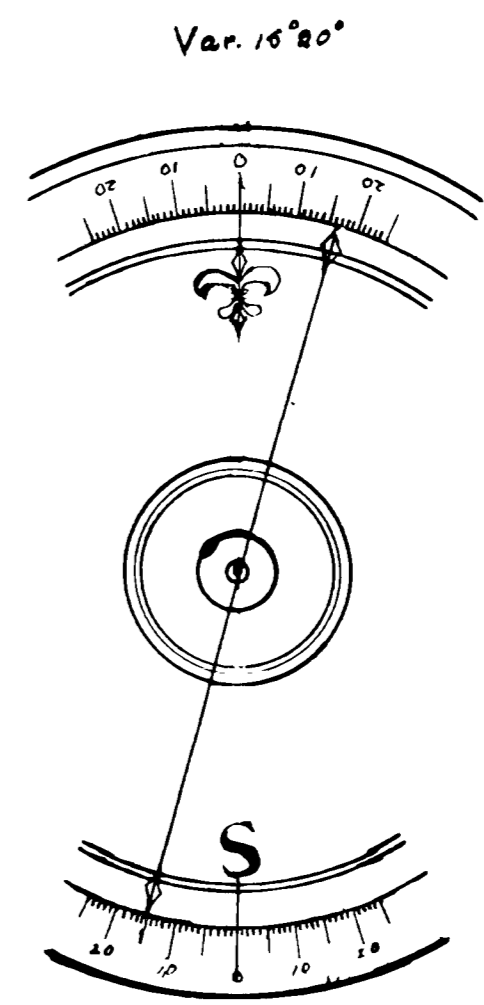
MESA COUNTY, COLORADO, U.S.A.  
AREA: 1780 ACRES.

In Sections 33 and 34, in T. 2 N., R. 3 W. Ute P.M.  
2, 3, 4, 8, 10, " T. 1 N., R. 3 W. " " " "  
Scale of map = 1 inch = 400 feet

# 78886



R.C. Star



B-3 P-13

