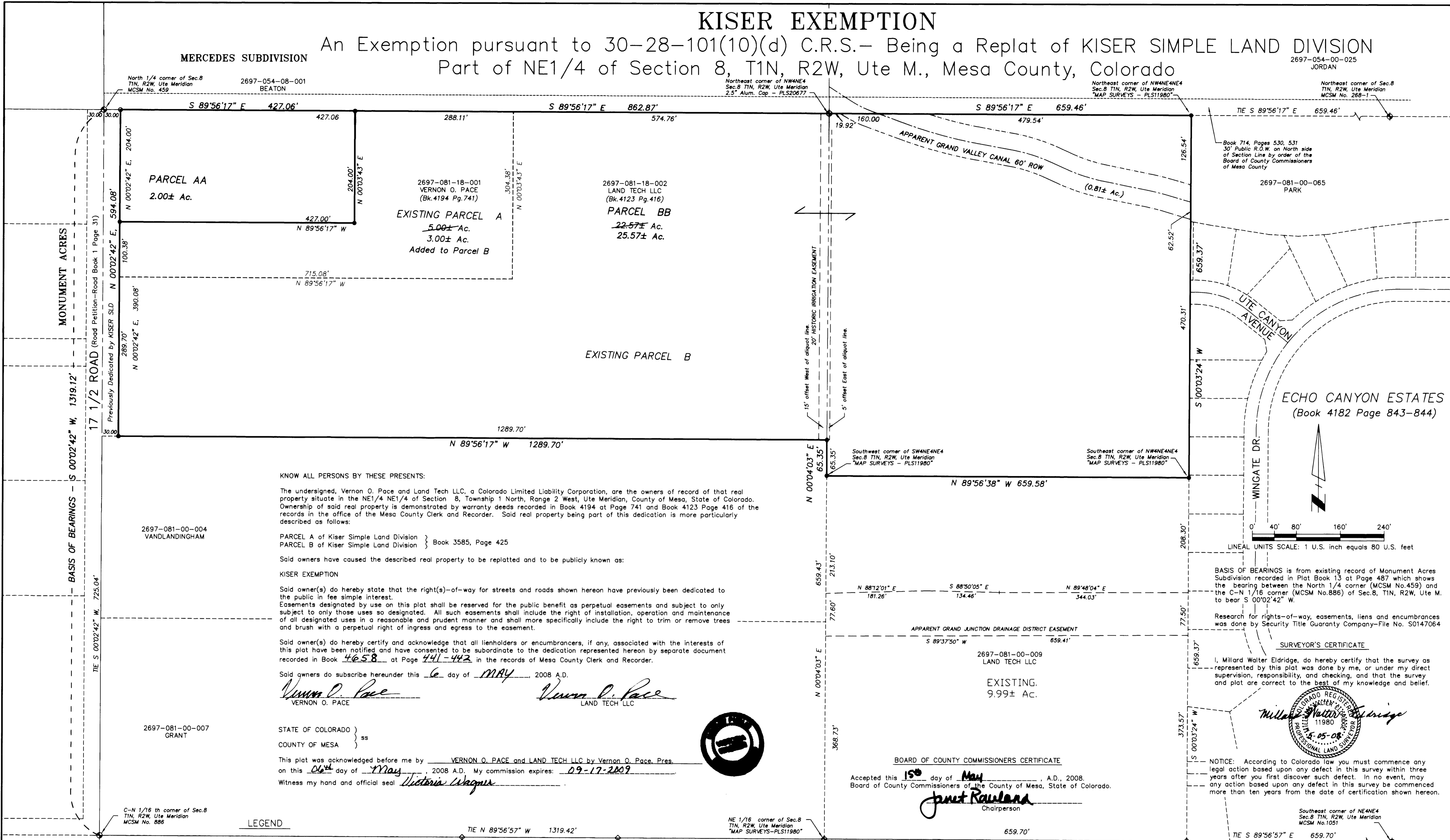


# KISER EXEMPTION

## An Exemption pursuant to 30-28-101(10)(d) C.R.S.- Being a Replat of KISER SIMPLE LAND DIVISION Part of NE1/4 of Section 8, T1N, R2W, Ute M., Mesa County, Colorado



Pursuant to C.R.S. 24-68-101 et seq., and Chapter 1.10 of the 2000 Mesa County Land Development Code, a site specific development plan has been approved by Mesa County for KISER EXEMPTION.

**SITE PLAN RESTRICTION NOTICE:** Restrictions appurtenant to the respective lots shown on this plat are designated on the associated Site Plan recorded in the office of the Mesa County Clerk and Recorder.

**RIGHT TO FARM ACT NOTICE:** This development is located in an agricultural area. It is hereby recognized that agricultural operations may continue pursuant to C.R.S. 35-3.5-101 et seq.

**KISER EXEMPTION**  
 N 18 Ac. of NW4NE4 & NW4NE4NE4 of Sec.8, T1N, R2W, Ute Meridian  
 PLANNING NO. 2008-158-PA1  
 DATE: April 28, 2008 SCALE: 1" = 80'

**MAP Surveys, Inc.**  
 MAPPING - PLANNING - SURVEYING  
 P.O. BOX 290, MESA, COLORADO 81643  
 (970)268-5851 FAX (970)268-5256